

Indiana State University

2007 Senior Student Profile: NSSE Edition

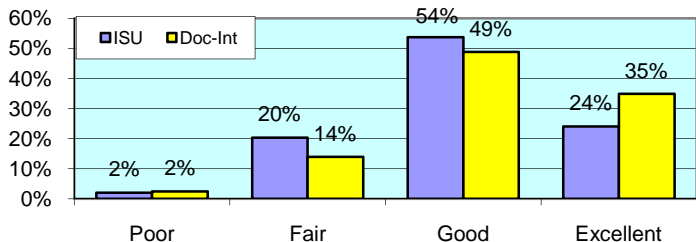
The National Survey of Student Engagement (NSSE) was administered to randomly selected Fall 2006 seniors in Spring 2007. The NSSE survey is designed to examine various aspects of a student's collegiate experience. Of the 1,370 seniors given the opportunity to participate, 686 students completed the survey via the internet, for a response rate of 50%. In addition to the results compiled for ISU students, this report includes the NSSE results of senior students enrolled at other doctoral institutions, which facilitates comparison with institutions similar to ISU.

All numbers in this report are percentages unless otherwise stated.

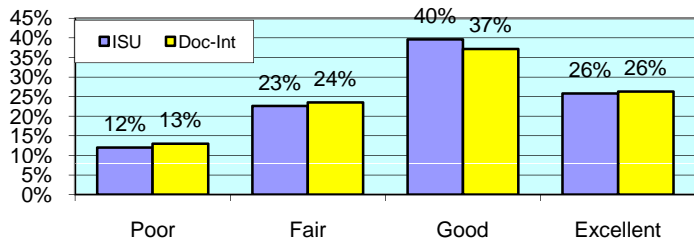
* item was found statistically significant in mean comparison

I. ABOUT INSTITUTION

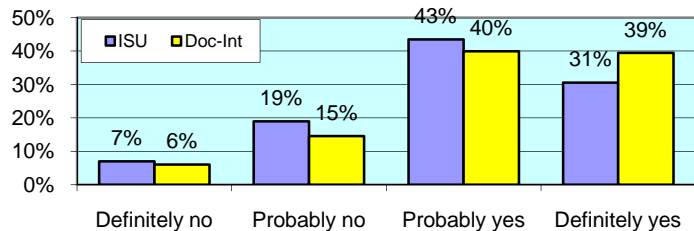
How would you evaluate your entire educational experience at this institution? *



Overall, how would you evaluate the quality of academic advising you have received at your institution?



If you could start over again, would you go to the same institution you are now attending?*

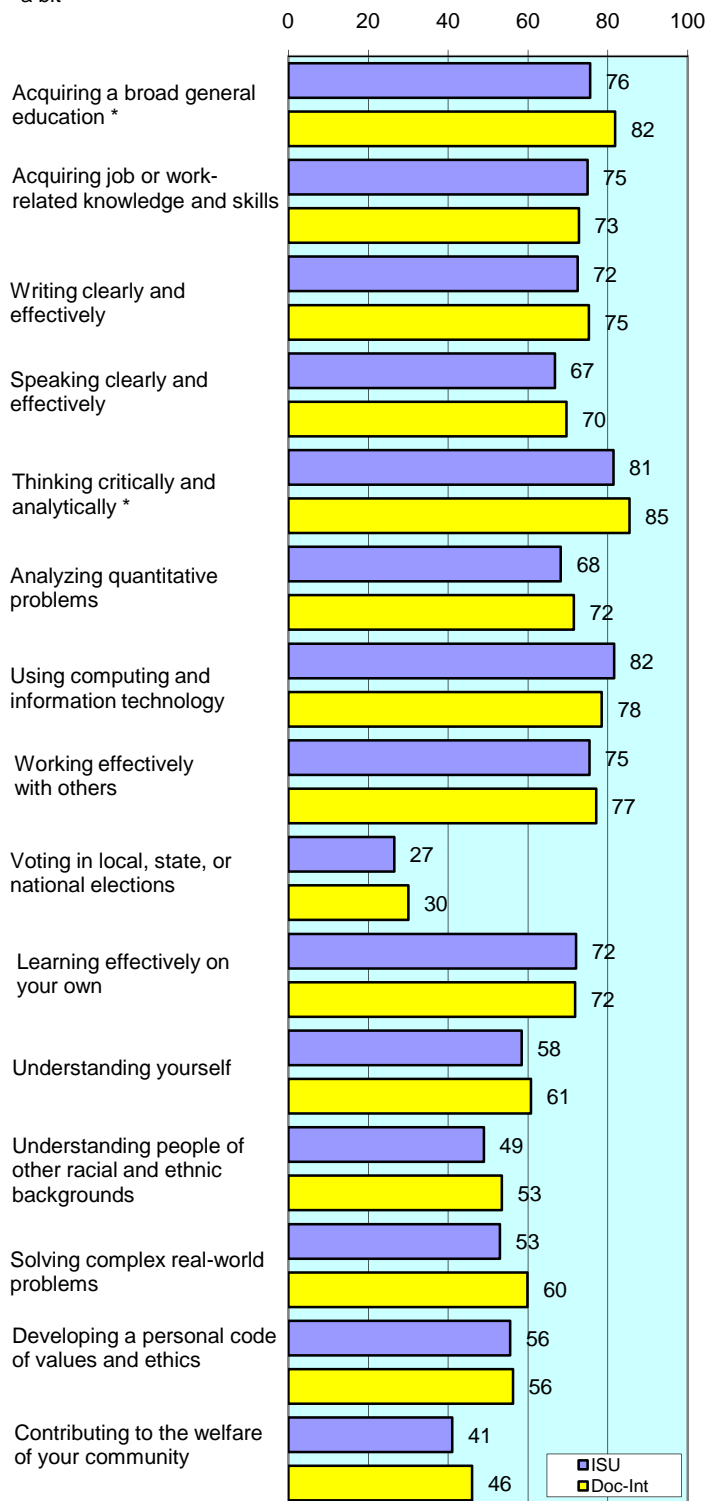


To what extent does your institution emphasize each of the following?

Items		Very little	Some	Quite a bit	Very much
Spending significant amounts of time studying and on academic work *	ISU	3	23	48	25
	Doc-Int	3	19	46	32
Providing the support you need to help you succeed academically *	ISU	7	30	43	20
	Doc-Int	6	26	43	25
Encouraging contact among students from diff racial/ethnic backgrounds*	ISU	20	40	26	14
	Doc-Int	18	34	29	19
Helping you cope with your non-academic responsibilities	ISU	39	35	19	7
	Doc-Int	39	36	17	8
Providing the support you need to thrive socially	ISU	25	44	24	8
	Doc-Int	28	39	24	9
Attending campus events /activities (speakers, performances, etc.) *	ISU	17	40	31	11
	Doc-Int	17	33	33	16
Using computers in academic work	ISU	0	11	32	57
	Doc-Int	2	9	28	60

To what extent has your experience at this institution contributed to your knowledge, skills, and personal development in the following?

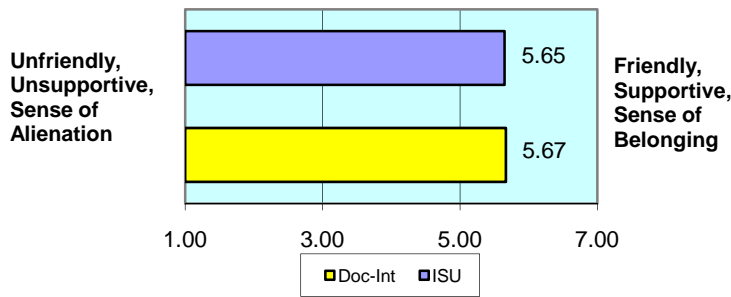
number is combined % who responded either 'very much' or 'quite a bit'



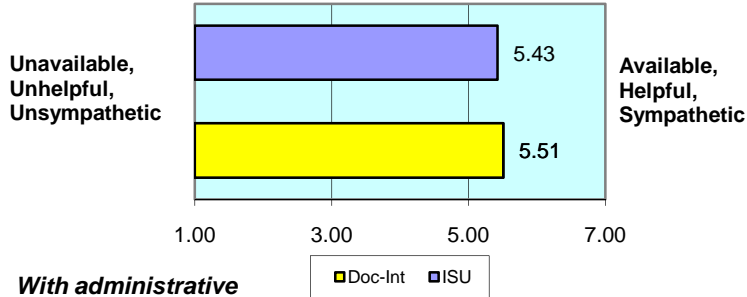
II. ABOUT RELATIONSHIPS

How would you rate your relationships with people at your institution?

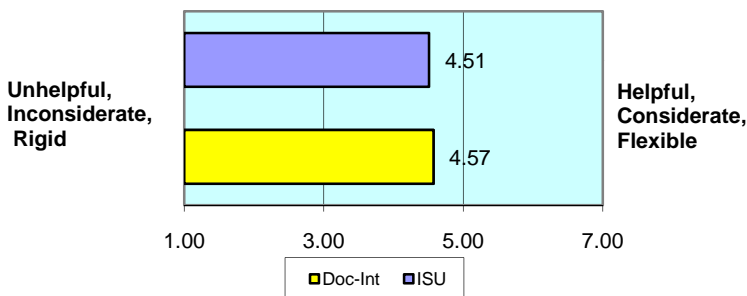
With other students... numbers indicate means of 7-point scale



With faculty members...



With administrative personnel & offices...



III. IN CLASSROOM

How often have you done each of the following?

Items		Never	Some-times	Often	Very often
Asked questions in class or contributed to class discussions	ISU	1	24	41	35
	Doc-Int	2	25	33	40
Made a class presentation*	ISU	8	32	39	20
	Doc-Int	5	32	36	26
Prepared two or more drafts of a paper or assignment before turning it in	ISU	16	39	29	16
	Doc-Int	15	36	28	21
Worked on a paper that required integrating ideas from various sources *	ISU	1	12	47	40
	Doc-Int	1	12	37	50
Included diverse perspectives in class discussions or assignments*	ISU	5	36	36	23
	Doc-Int	6	29	34	30
Came to class without completing readings or assignments	ISU	24	56	15	4
	Doc-Int	20	59	14	7
Put together ideas from different courses for assignments or class discussions *	ISU	3	35	44	18
	Doc-Int	3	27	43	27
Used an electronic medium to discuss or complete an assignment	ISU	9	27	27	37
	Doc-Int	10	27	27	36
Worked harder than you thought you could to meet an instructor's expectations	ISU	6	40	36	18
	Doc-Int	6	35	38	22

IV. INVOLVEMENT WITH FACULTY

How often have you done each of the following?

Items		Never	Some-times	Often	Very often
Used e-mail to communicate with an instructor	ISU	0	13	32	56
	Doc-Int	1	14	32	53
Discussed grades or assignments with an instructor	ISU	3	33	34	30
	Doc-Int	5	36	33	27
Talked about career plans with a faculty member or advisor	ISU	17	41	26	16
	Doc-Int	18	42	24	17
Discussed ideas from your classes with faculty outside of class	ISU	26	47	17	11
	Doc-Int	29	43	17	10
Received prompt feedback from faculty on your performance	ISU	4	35	42	19
	Doc-Int	5	30	44	20
Worked with faculty members on activities other than coursework	ISU	45	31	17	8
	Doc-Int	49	29	13	9

V. INVOLVEMENT WITH OTHER STUDENTS

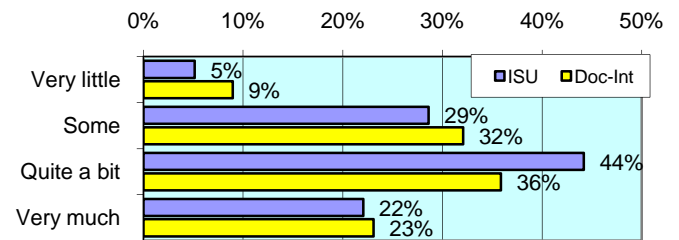
How often have you done each of the following?

Items		Never	Some-times	Often	Very often
Worked with other students on projects during class	ISU	9	42	34	16
	Doc-Int	10	41	31	18
Worked with classmates outside of class to prepare assignments	ISU	7	37	36	20
	Doc-Int	7	34	34	25
Tutored or taught other students (paid or voluntary)	ISU	40	37	14	10
	Doc-Int	43	36	12	9
Discussed ideas from your classes with others outside of class *	ISU	4	42	36	19
	Doc-Int	4	32	37	27
Had serious conversations with students of a different race *	ISU	13	41	26	19
	Doc-Int	12	33	28	26
Had serious conversations with students who have different personal values from yours *	ISU	12	39	29	20
	Doc-Int	10	35	28	27

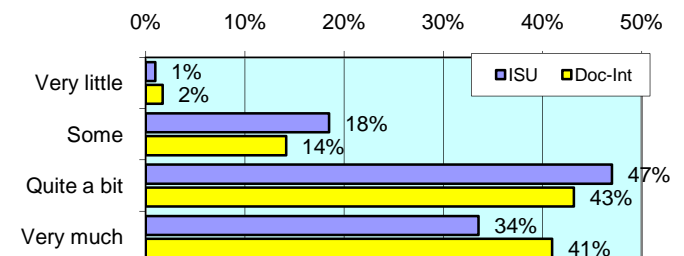
VI. ACADEMIC WORK

How much has your coursework emphasized the following mental activities?

Memorizing facts, ideas or methods from your courses and readings

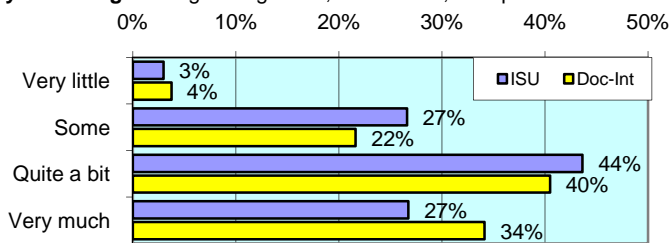


Analyzing the basic elements of an idea, experience or theory *

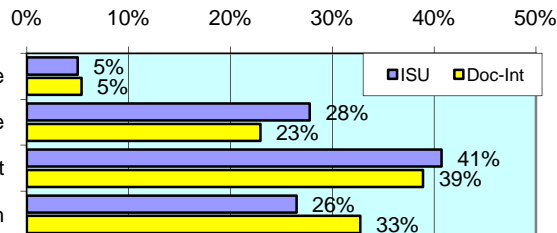


VI. ACADEMIC WORK (continued)

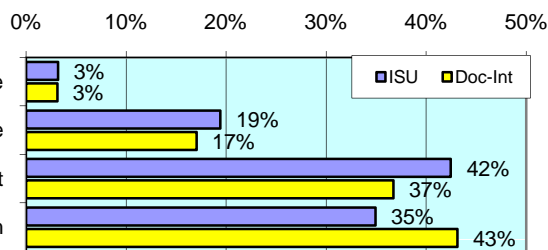
Synthesizing and organizing ideas, information, or experiences *



Making judgments about the value of information, arguments, or methods



Applying theories or concepts to practical problems or in new situations *



In a typical week, how many homework problem sets do you complete?

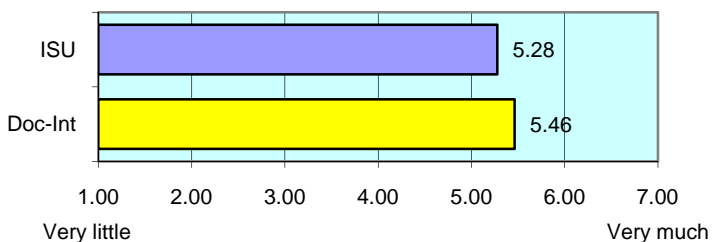
Items		None	1-2	3-4	More than 5
Number of problem sets that take you more than an hour to complete	ISU	16	33	31	20
	Doc-Int	18	31	30	20
Number of problem sets that take you less than an hour to complete *	ISU	19	36	27	19
	Doc-Int	26	37	20	17

During the current school year, about how often have you done each of the following?

Items		Never	Some-times	Often	Very often
Examined the strengths and weaknesses of your own views on a topic*	ISU	8	43	35	14
	Doc-Int	8	34	37	21
Tried to better understand someone else's views by imagining how an issue looks from his or her perspective *	ISU	5	38	39	18
	Doc-Int	5	31	39	25
Learned something that changed the way you understand an issue or concept *	ISU	2	40	41	18
	Doc-Int	3	30	41	26

Mark the box that best represents the extent to which your examinations during the current school year have challenged you to do your best work *

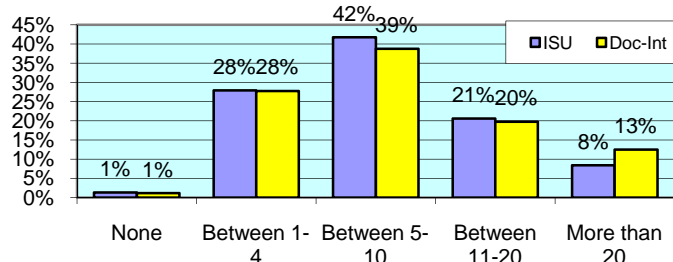
numbers indicate means of 7-point scale



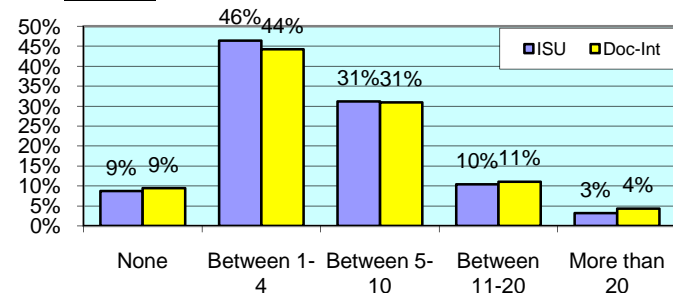
OSPIRE

During the current school year, about how much reading and writing have you done?

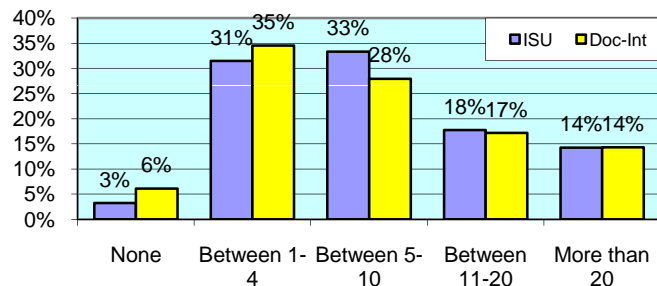
Number of assigned textbooks, books, or book-length packs of course readings



Number of written papers or reports between 5 and 19 pages



Number of written papers or reports of fewer than 5 pages



VII. PLANS DURING COLLEGE

Which of the following have you done or do you plan to do before you graduate from your institution?

Item		Not decided	Won't do	Plan to do	Done
Practicum, internship, field experience, co-op experience, or clinical assignment	ISU	7	11	26	56
	Doc-Int	9	16	25	51
Community service or volunteer work	ISU	9	16	14	60
	Doc-Int	10	17	15	59
Participate in a learning community *	ISU	14	42	10	34
	Doc-Int	14	49	10	28
Worked on a research project with a faculty member outside of course	ISU	16	56	10	17
	Doc-Int	18	52	13	17
Foreign language coursework	ISU	7	44	9	40
	Doc-Int	9	42	9	39
Study abroad *	ISU	13	75	6	6
	Doc-Int	14	65	8	13
Independent study or self-designed major	ISU	10	60	10	20
	Doc-Int	14	61	9	16
Culminating senior experience (thesis, project, etc.)*	ISU	6	10	35	49
	Doc-Int	12	24	32	32



Office of Strategic Planning, Institutional Research & Effectiveness

419 Rankin Hall, Tel: 237-2305, Fax: 237-4530

<http://irt2.indstate.edu/home/index.htm>