

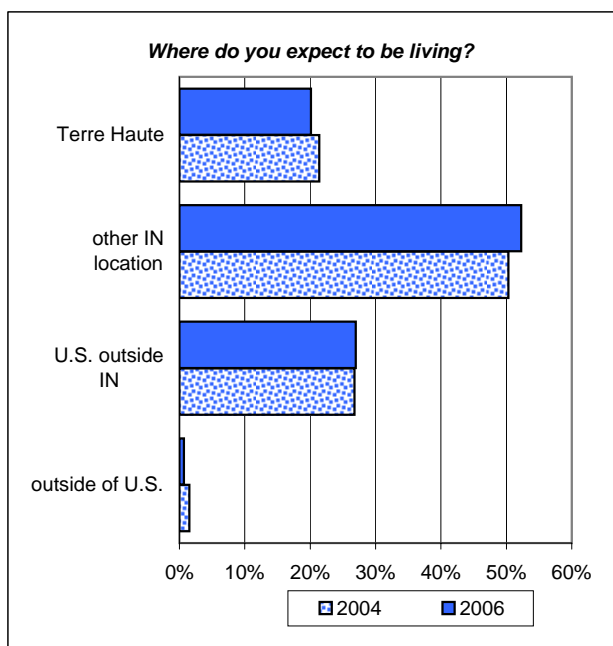
Indiana State University 2006 Senior Survey Report

The 2006 Senior Survey instrument was the same one administered to 2004 spring graduates. As in 2004, surveys were sent to all seniors who had applied for graduation before the end of the Spring semester. Of the 1,317 surveys sent, a total of 445 were returned, making the 2006 response rate 33.8%, down by 5.6% from 2004. The findings suggest that significant improvement was found in numerous areas as compared to the 2004 results.

I. Plans for Next Year

Which best describes your plans for next year?

	% indicating response	2004
Remain in current job related to major	17%	17%
Remain in job not related to major, but look for work in major	16%	15%
Look for job (not currently employed)	42%	43%
Attend school	17%	16%
None of the above	8%	8%



II. General Satisfaction

Overall, how satisfied are you with regard to:

	% Satisfied	% Neutral	% Dissatisfied	% Satisfied 2004
Your personal growth	91%	8%	1%	90%
Your intellectual growth	87%	11%	2%	87%
Classroom instruction	87%	12%	1%	85%
Value of your education	87%	9%	4%	83%
Your entire experience	86%	11%	3%	83%
Library	86%	12%	3%	79%
Appearance of grounds	83%	14%	3%	86%
Computer labs	80%	16%	4%	76%
Personal safety	80%	16%	4%	77%
HMSU	80%	18%	2%	77%
Preparation future educ.	73%	21%	5%	72%
Appearance of buildings	73%	21%	6%	75%
Career preparation	73%	20%	7%	66%
Safety and Security	70%	25%	5%	70%
Registration	66%	25%	9%	65%
Student activities	63%	29%	7%	57%
Laboratory facilities	63%	31%	6%	57%
Career Center	62%	31%	6%	52%
Senior Checkout	60%	34%	6%	53%
Student Health Center	60%	28%	11%	51%
Gen. Ed. requirements	55%	27%	18%	52%
Acad. Services Center	54%	42%	3%	50%
Recreational Sports	53%	40%	7%	54%
Student Life Office	50%	46%	4%	45%
Counseling Center	45%	52%	4%	40%
Financial Aid	40%	27%	33%	25%
Fee payments	31%	41%	28%	25%
Parking	26%	19%	54%	21%

% shown excludes those who responded "Not Applicable/Never Used"
Scale: 1 - Strongly Agree, 5 - Strongly Disagree

III. Your Academic Program

I am satisfied with ...

	% Agree	% Neutral	% Disagree	% Agree 2004
Professional expertise of faculty in my major	86%	9%	5%	84%
Teaching ability of faculty in my major	85%	8%	6%	85%
Fairness of grading in my major	82%	15%	3%	80%
Opportunities to interact with departmental faculty	81%	14%	5%	78%
Opportunities to evaluate classroom instruction in my major	75%	18%	7%	79%
Feedback from instructors about my academic progress	73%	19%	8%	73%
Academic ability of other students in my major	72%	22%	6%	68%
Preparation for employment I received from courses in my major	70%	20%	10%	68%
Preparation for grad./prof. study I received from courses in my major	70%	23%	7%	67%
Scheduling of course offerings in my major	69%	16%	14%	67%
Academic advising related to my major	69%	17%	14%	68%
Information provided about internships, practicums, or coops	57%	26%	18%	53%
Academic advising related to General Education	54%	28%	18%	54%
Career counseling provided by my department	48%	33%	19%	41%

Scale: 1 - Strongly Agree, 5 - Strongly Disagree

IV. Skills and Knowledge

HIGHLIGHTS

My experiences at ISU have prepared me well in ...

	% Agree	% Neutral	% Disagree	% Agree 2004
Thinking critically	86%	12%	3%	83%
Writing	85%	13%	3%	83%
Listening	84%	14%	2%	84%
Speaking	83%	12%	5%	81%
Thinking creatively	81%	17%	3%	79%
Problem solving	80%	18%	2%	80%
Using library resources	73%	21%	6%	68%
Physical health/well being	63%	27%	10%	56%
Using mathematics	58%	32%	10%	50%
Appreciating the arts	57%	30%	13%	48%

Scale: 1 - Strongly Agree, 5 - Strongly Disagree

- Financial Aid and Career Center raised their student satisfaction by 16% and 10% from 2004, while appearances of ground and buildings, recreational sports went down slightly in 2006

- 48% of ISU seniors were satisfied with career counseling provided by their departments. This was up by 7% from 2004.

- More seniors were reported in 2006 who were better prepared in appreciating the arts and using mathematics.

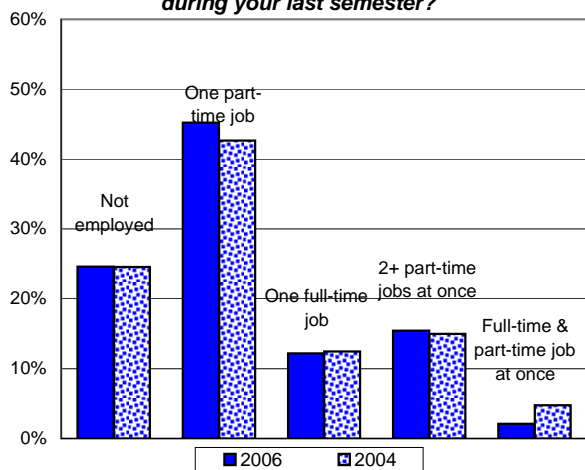
- ISU seniors who spent more than 21 hrs. a week on studying increased by 5%

- 2006 seniors were more satisfied with social & academic climates, and privacy on campus than the ISU seniors in 2004.

- 23% of seniors spent more than 50% of their time on campus, while 18% did so in 2004.

V. Life at ISU

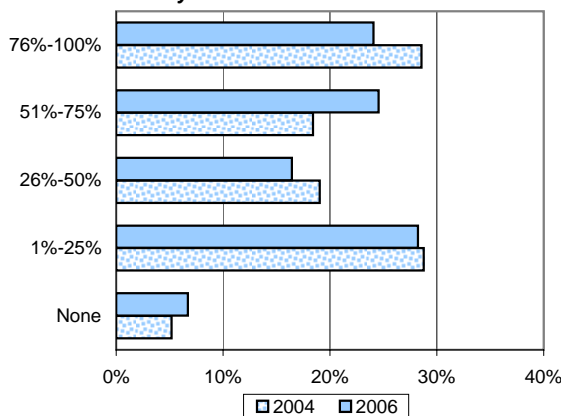
Which best describes your working situation during your last semester?



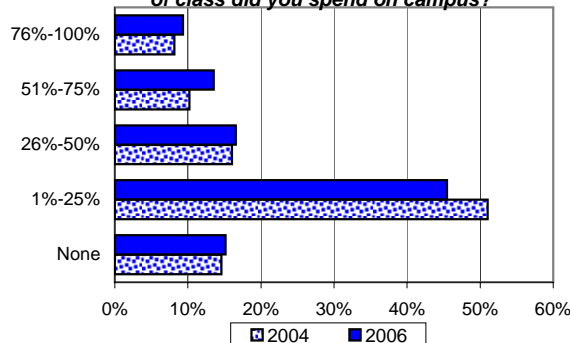
How many times per month did you typically attend ...

	% None	% 1-5	% 6 or more	% None 2004
ISU sports events	57%	35%	7%	59%
Artistic events	69%	28%	3%	70%
Greek functions	71%	15%	14%	73%
Social organ. events	53%	41%	6%	58%

During your last year, what percentage of your friends were ISU students?



In your last year, what portion of your time out of class did you spend on campus?




How many hours per week did you typically spend ...

		None	1-10	11-20	21-30	31+
Studying out of class	2006	1%	56%	29%	11%	3%
	2004	2%	60%	29%	7%	2%
Socializing on campus	2006	21%	59%	15%	3%	2%
	2004	22%	61%	12%	4%	1%
Employed on campus	2006	63%	14%	18%	2%	2%
	2004	67%	14%	15%	3%	1%
Employed off campus	2006	39%	13%	19%	15%	14%
	2004	35%	12%	19%	15%	19%

How satisfied are you with these aspects of the Residence Halls?

	% Satisfied	% Neutral	% Dissatisfied	% Satisfied 2004
Social climate	67%	26%	7%	61%
Academic climate	56%	32%	12%	53%
Quality of food	51%	30%	19%	53%
Physical facilities	56%	31%	14%	55%
Privacy	51%	35%	13%	45%

Figures do not include students who never lived in ISU residence halls


 Office of Strategic Planning, Institutional Research & Effectiveness
 419 Rankin Hall, Tel: 237-2305, Fax: 237-4530
<http://irt2.indstate.edu/home/index.htm>