

# Indiana State University

## 2005 NSSE Senior Profile: College of Technology

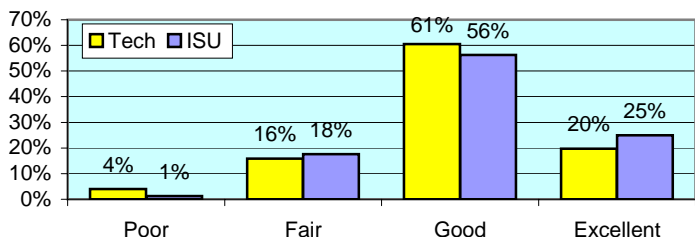
The National Survey of Student Engagement (NSSE) was administered to randomly selected ISU students in Spring 2005. The NSSE survey is designed to examine various aspects of a student's collegiate experience. Of the 671 ISU Senior students who completed the survey via the internet, 76 were from College of Technology. This report presents comparisons between Technology students and the rest of respondents. Separate reports including overall NSSE results are available upon request to the ISU campus community.

**All numbers in this report are percentages unless otherwise stated.**

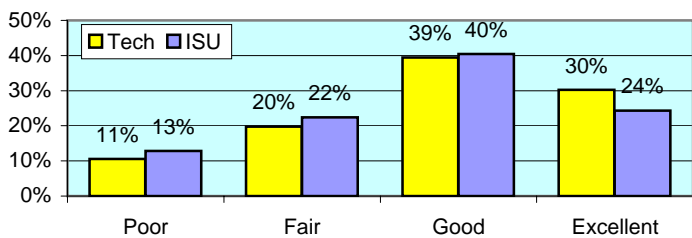
\* item was found statistically significant in mean comparison

### I. ABOUT INSTITUTION

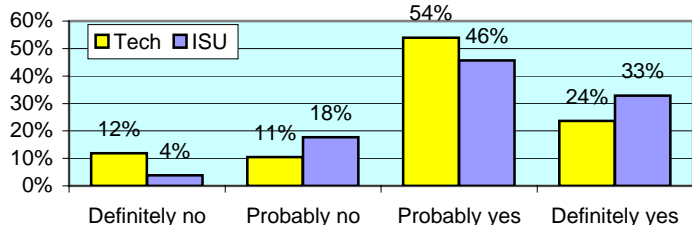
**How would you evaluate your entire educational experience at this institution?**



**Overall, how would you evaluate the quality of academic advising you have received at your institution?**



**If you could start over again, would you go to the same institution you are now attending?**

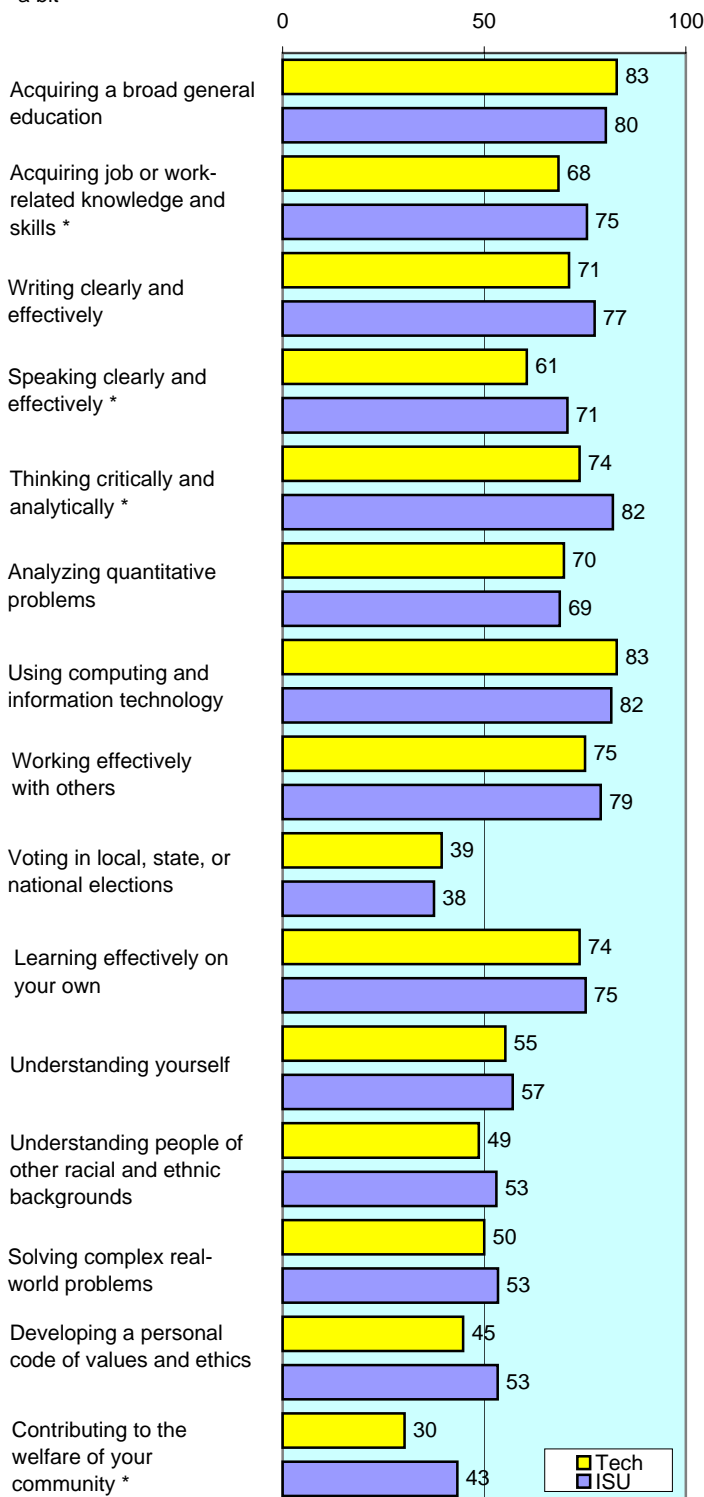


**To what extent does your institution emphasize each of the following?**

Items		Very little	Some	Quite a bit	Very much
Spending significant amounts of time studying and on academic work	Tech	3	25	50	22
	ISU	3	25	44	28
Providing the support you need to help you succeed academically	Tech	7	41	38	14
	ISU	4	33	45	17
Encouraging contact among students from different racial/ethnic backgrounds	Tech	16	43	28	13
	ISU	21	40	28	11
Helping you cope with your non-academic responsibilities	Tech	47	34	13	5
	ISU	44	36	13	7
Providing the support you need to thrive socially	Tech	32	42	21	5
	ISU	28	44	21	6
Attending campus events and activities (speakers, performances, etc.) *	Tech	29	39	25	7
	ISU	15	41	33	11
Using computers in academic work	Tech	0	13	37	50
	ISU	1	10	33	56

**To what extent has your experience at this institution contributed to your knowledge, skills, and personal development in the following?**

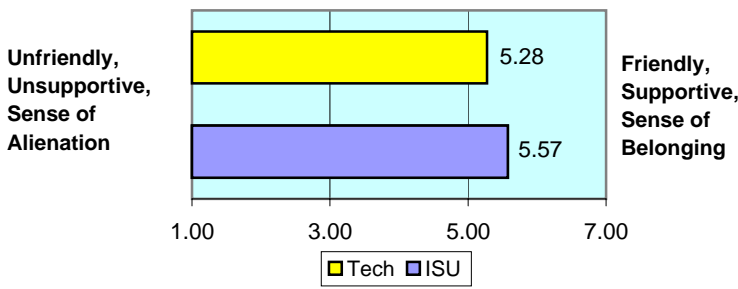
number is combined % who responded either 'very much' or 'quite a bit'



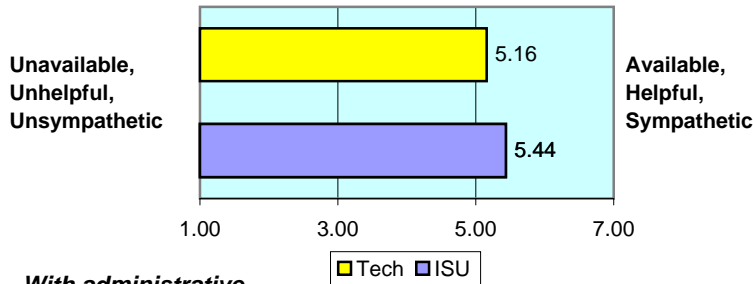
## II. ABOUT RELATIONSHIPS

How would you rate your relationships with people at your institution?

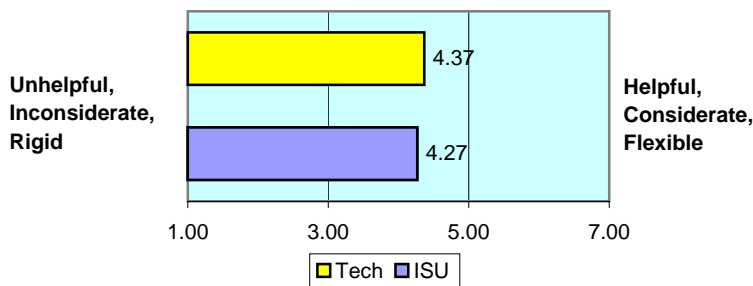
*With other students...* numbers indicate means of 7-point scale



*With faculty members...*



*With administrative personnel & offices...*



## III. IN CLASSROOM

How often have you done each of the following?

Items		Never	Some-times	Often	Very often
Asked questions in class or contributed to class discussions	Tech	4	22	34	39
	ISU	2	20	39	38
Made a class presentation	Tech	8	24	43	25
	ISU	6	33	37	24
Prepared two or more drafts of a paper or assignment before turning it in	Tech	11	33	39	17
	ISU	17	39	27	17
Worked on a paper that required integrating ideas from various sources	Tech	0	12	50	38
	ISU	2	13	43	42
Included diverse perspectives in class discussions or assignments *	Tech	11	49	24	17
	ISU	5	38	35	22
Came to class without completing readings or assignments	Tech	28	51	12	9
	ISU	24	56	13	7
Put together ideas from different courses for assignments or class discussions	Tech	4	28	54	14
	ISU	3	33	44	19
Used an electronic medium to discuss or complete an assignment	Tech	13	26	22	38
	ISU	10	27	27	36
Worked harder than you thought you could to meet an instructor's expectations	Tech	8	36	45	12
	ISU	5	36	39	20

## IV. INVOLVEMENT WITH FACULTY

How often have you done each of the following?

Items		Never	Some-times	Often	Very often
Used e-mail to communicate with an instructor	Tech	0	20	26	54
	ISU	1	14	33	52
Discussed grades or assignments with an instructor	Tech	3	42	32	24
	ISU	3	32	37	28
Talked about career plans with a faculty member or advisor	Tech	17	41	21	21
	ISU	14	41	26	19
Discussed ideas from your classes with faculty outside of class	Tech	24	46	20	11
	ISU	28	45	16	11
Received prompt feedback from faculty on your performance	Tech	9	30	39	21
	ISU	2	31	48	19
Worked with faculty members on activities other than coursework	Tech	45	34	17	4
	ISU	43	31	17	9

## V. INVOLVEMENT WITH OTHER STUDENTS

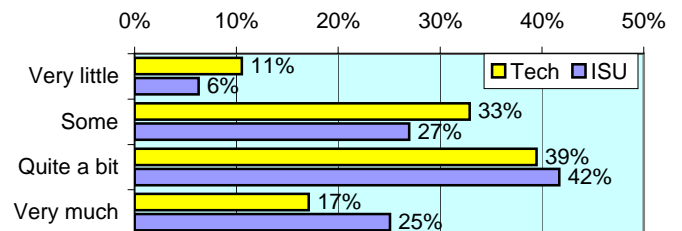
How often have you done each of the following?

Items		Never	Some-times	Often	Very often
Worked with other students on projects during class	Tech	11	33	34	22
	ISU	10	39	35	16
Worked with classmates outside of class to prepare assignments	Tech	8	46	37	9
	ISU	9	35	37	19
Tutored or taught other students (paid or voluntary)	Tech	41	33	20	7
	ISU	42	34	15	9
Discussed ideas from your classes with others outside of class	Tech	7	36	42	16
	ISU	6	38	38	19
Had serious conversations with students of a different race	Tech	18	45	21	16
	ISU	14	42	24	19
Had serious conversations with students who have different personal values from yours *	Tech	20	41	22	17
	ISU	11	38	29	22

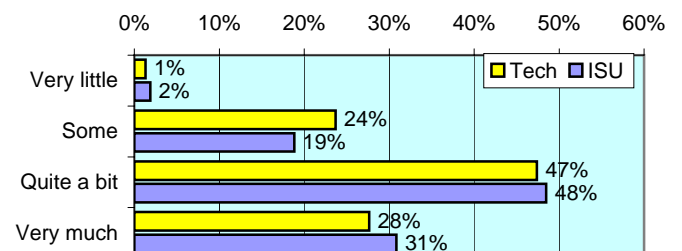
## VI. ACADEMIC WORK

How much has your coursework emphasized the following mental activities?

**Memorizing** facts, ideas or methods from your courses and readings \*

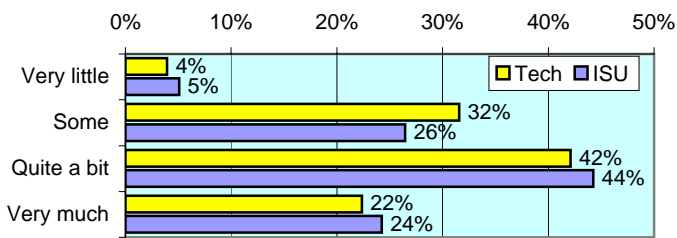


**Analyzing** the basic elements of an idea, experience or theory

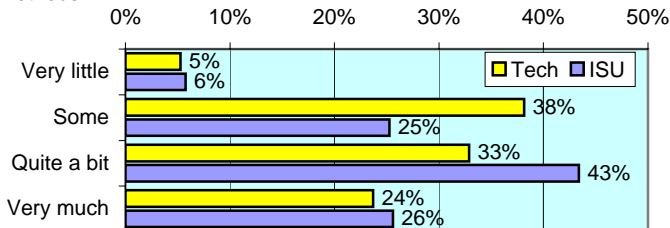


## VI. ACADEMIC WORK (continued)

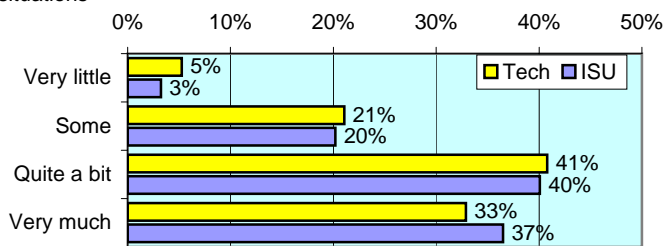
**Synthesizing** and organizing ideas, information, or experiences



**Making judgments** about the value of information, arguments, or methods



**Applying** theories or concepts to practical problems or in new situations



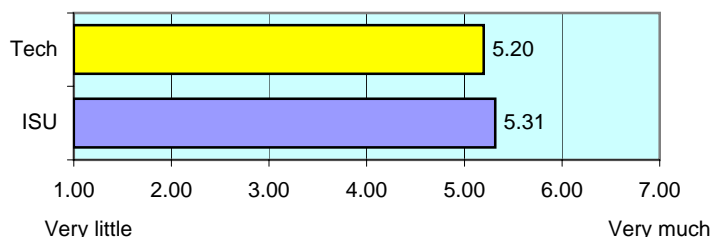
**In a typical week, how many homework problem sets do you complete?**

Items		None	1-2	3-4	More than 5
Number of problem sets that take you more than an hour to complete	Tech	9	36	29	26
	ISU	16	34	31	19
Number of problem sets that take you less than an hour to complete *	Tech	11	36	20	34
	ISU	17	37	25	22

**During the current school year, about how often have you done each of the following?**

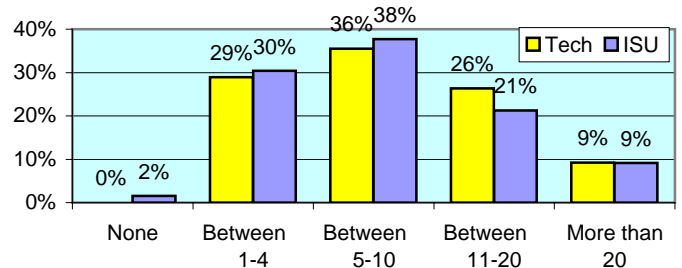
Items		Never	Some-times	Often	Very often
Examined the strengths and weaknesses of your own views on a topic	Tech	8	39	34	18
	ISU	9	40	35	16
Tried to better understand someone else's views by imagining how an issue looks from his or her perspective	Tech	5	46	33	16
	ISU	4	38	40	19
Learned something that changed the way you understand an issue or concept	Tech	7	45	32	17
	ISU	4	39	37	20

**Mark the box that best represents the extent to which your examinations during the current school year have challenged you to do your best work** numbers indicate means of 7-point scale

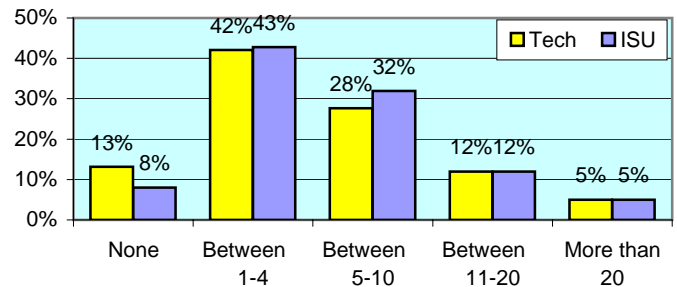


**During the current school year, about how much reading and writing have you done?**

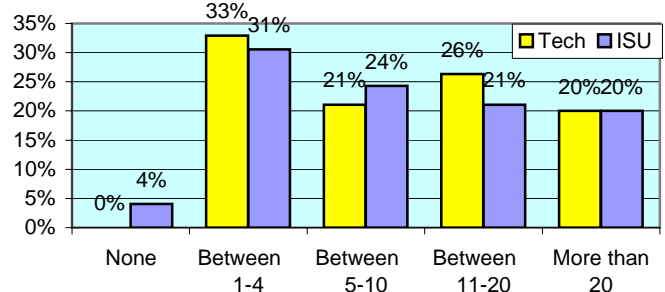
**Number of assigned textbooks, books, or book-length packs of course readings**



**Number of written papers or reports between 5 and 19 pages**



**Number of written papers or reports of fewer than 5 pages**



## VII. PLANS DURING COLLEGE

**Which of the following have you done or do you plan to do before you graduate from your institution?**

Item		Not decided	Won't do	Plan to do	Done
Practicum, internship, field experience, co-op experience, or clinical assignment *	Tech	11	24	17	49
	ISU	5	9	23	62
Community service or volunteer work *	Tech	14	26	11	49
	ISU	9	15	12	63
Participate in a learning community	Tech	18	47	4	30
	ISU	12	43	9	36
Worked on a research project with a faculty member outside of course	Tech	17	58	8	17
	ISU	19	55	8	18
Foreign language coursework	Tech	5	51	5	38
	ISU	5	45	9	41
Study abroad	Tech	9	82	7	3
	ISU	12	79	4	5
Independent study or self-designed major	Tech	16	54	9	21
	ISU	10	59	8	23
Culminating senior experience (thesis, project, etc.)	Tech	14	28	24	34
	ISU	11	23	30	36



Office of Strategic Planning, Institutional Research & Effectiveness

419 Rankin Hall, Tel: 237-2305, Fax: 237-4530

<http://irt2.indstate.edu/home/index.htm>