

Indiana State University

2005 NSSE Senior Profile: College of Nursing

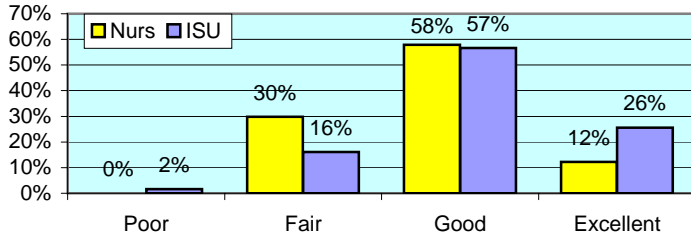
The National Survey of Student Engagement (NSSE) was administered to randomly selected ISU students in Spring 2005. The NSSE survey is designed to examine various aspects of a student's collegiate experience. Of the 671 ISU Senior students who completed the survey via the internet, 57 were from College of Nursing. This report presents comparisons between Nursing students and the rest of respondents. Separate reports including overall NSSE results are available upon request to the ISU campus community.

All numbers in this report are percentages unless otherwise stated.

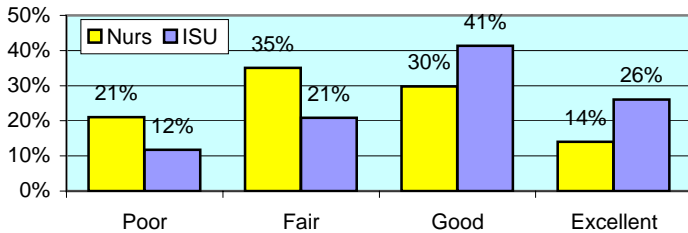
* item was found statistically significant in mean comparison

I. ABOUT INSTITUTION

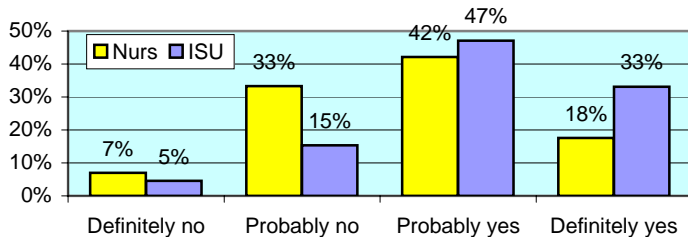
How would you evaluate your entire educational experience at this institution? *



Overall, how would you evaluate the quality of academic advising you have received at your institution? *



If you could start over again, would you go to the same institution you are now attending? *

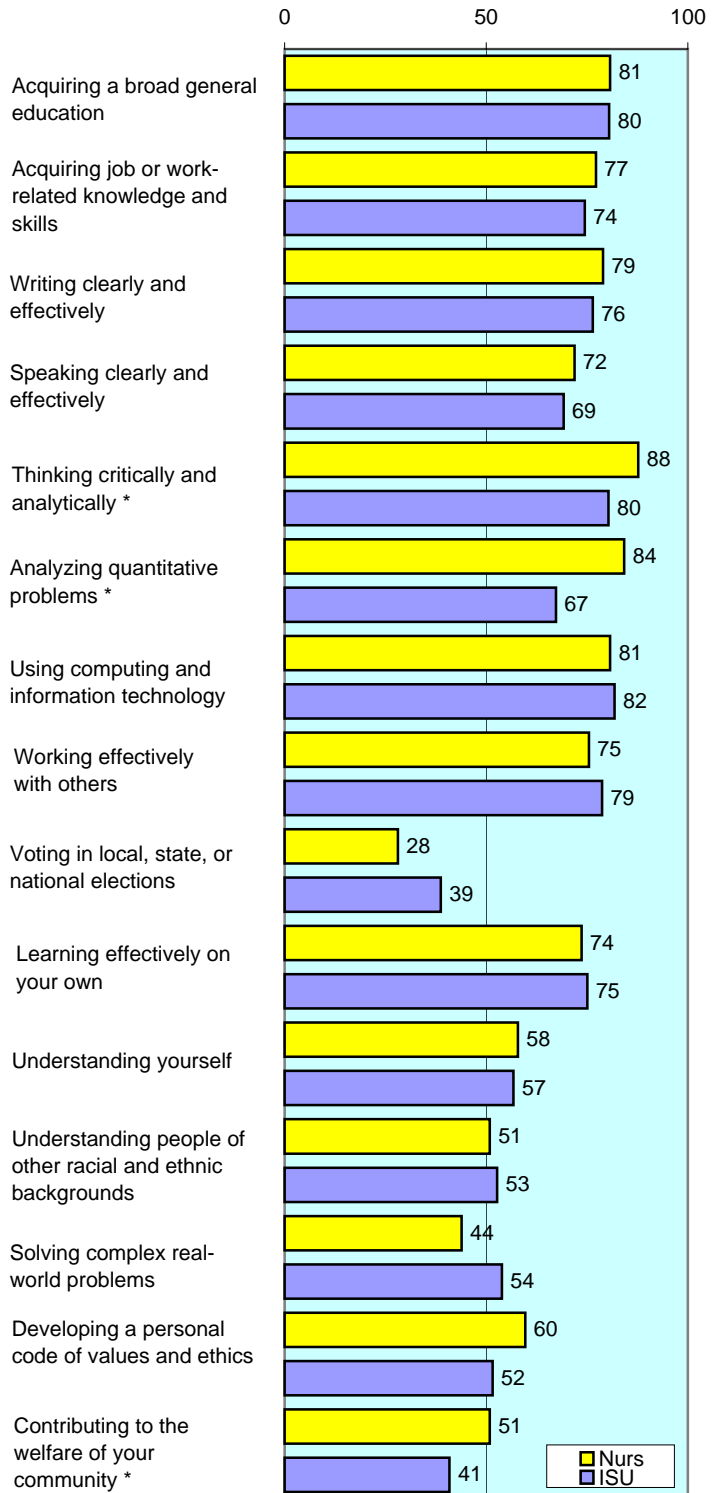


To what extent does your institution emphasize each of the following?

Items		Very little	Some	Quite a bit	Very much
		Nurs	4	11	35
Spending significant amounts of time studying and on academic work *	ISU	3	26	46	25
Providing the support you need to help you succeed academically	Nurs	16	25	46	14
	ISU	4	35	44	17
Encouraging contact among students from different racial/ethnic backgrounds	Nurs	21	49	19	11
	ISU	20	40	28	12
Helping you cope with your non-academic responsibilities	Nurs	53	28	14	5
	ISU	43	37	13	7
Providing the support you need to thrive socially	Nurs	39	40	16	5
	ISU	27	45	22	6
Attending campus events and activities (speakers, performances, etc.)	Nurs	14	50	29	7
	ISU	17	40	32	11
Using computers in academic work *	Nurs	0	5	28	67
	ISU	1	11	34	54

To what extent has your experience at this institution contributed to your knowledge, skills, and personal development in the following?

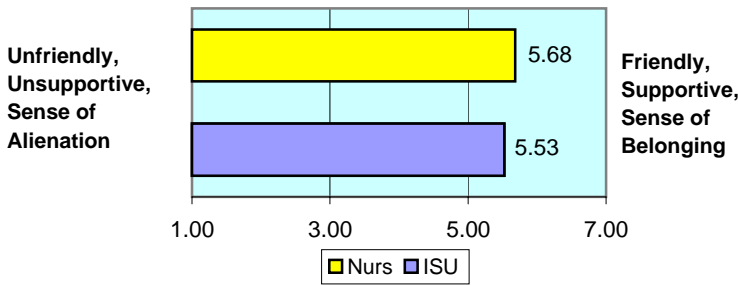
number is combined % who responded either 'very much' or 'quite a bit'



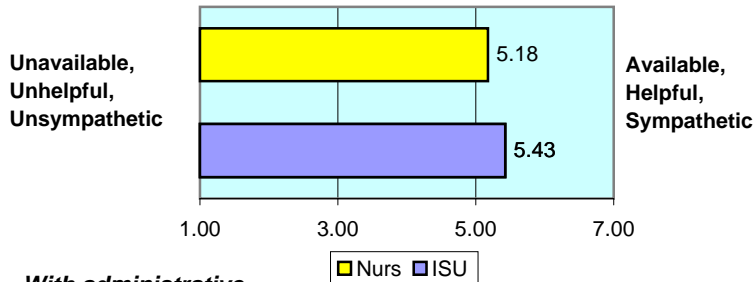
II. ABOUT RELATIONSHIPS

How would you rate your relationships with people at your institution?

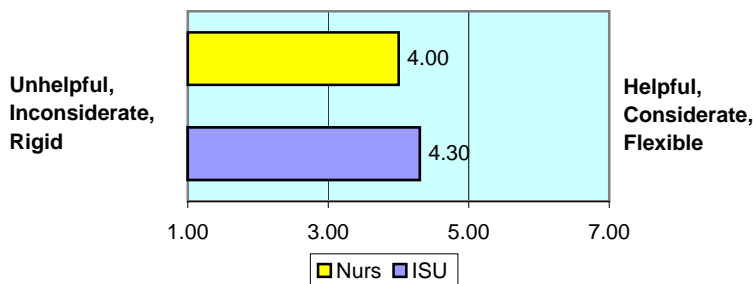
With other students... numbers indicate means of 7-point scale



With faculty members...



With administrative personnel & offices...



III. IN CLASSROOM

How often have you done each of the following?

Items		Never	Some-times	Often	Very often
Asked questions in class or contributed to class discussions	Nurs	5	25	39	32
	ISU	2	20	39	39
Made a class presentation *	Nurs	5	21	40	33
	ISU	7	33	37	23
Prepared two or more drafts of a paper or assignment before turning it in *	Nurs	9	28	33	30
	ISU	17	39	28	16
Worked on a paper that required integrating ideas from various sources *	Nurs	2	5	28	65
	ISU	1	14	45	39
Included diverse perspectives in class discussions or assignments	Nurs	4	32	37	28
	ISU	5	40	34	21
Came to class without completing readings or assignments	Nurs	30	53	9	9
	ISU	24	56	13	7
Put together ideas from different courses for assignments or class discussions	Nurs	0	37	39	25
	ISU	4	32	46	18
Used an electronic medium to discuss or complete an assignment *	Nurs	5	19	16	60
	ISU	11	27	27	35
Worked harder than you thought you could to meet an instructor's expectations *	Nurs	0	25	44	32
	ISU	6	37	39	18

IV. INVOLVEMENT WITH FACULTY

How often have you done each of the following?

Items		Never	Some-times	Often	Very often
Used e-mail to communicate with an instructor *	Nurs	0	7	16	77
	ISU	1	15	34	50
Discussed grades or assignments with an instructor *	Nurs	2	23	35	40
	ISU	3	34	36	27
Talked about career plans with a faculty member or advisor	Nurs	12	44	23	21
	ISU	15	41	25	19
Discussed ideas from your classes with faculty outside of class	Nurs	23	53	7	18
	ISU	28	44	18	10
Received prompt feedback from faculty on your performance	Nurs	0	28	53	19
	ISU	3	31	47	19
Worked with faculty members on activities other than coursework	Nurs	49	35	14	2
	ISU	43	31	17	9

V. INVOLVEMENT WITH OTHER STUDENTS

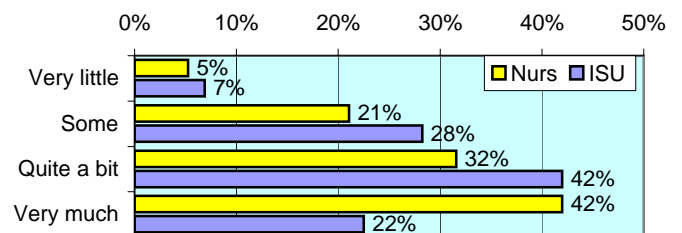
How often have you done each of the following?

Items		Never	Some-times	Often	Very often
Worked with other students on projects during class	Nurs	28	30	19	23
	ISU	8	39	36	16
Worked with classmates outside of class to prepare assignments *	Nurs	11	14	44	32
	ISU	8	38	37	16
Tutored or taught other students (paid or voluntary)	Nurs	50	39	5	7
	ISU	41	34	17	9
Discussed ideas from your classes with others outside of class *	Nurs	2	23	46	30
	ISU	7	39	37	17
Had serious conversations with students of a different race	Nurs	14	45	21	20
	ISU	15	42	24	19
Had serious conversations with students who have different personal values from yours	Nurs	12	32	37	19
	ISU	12	39	27	21

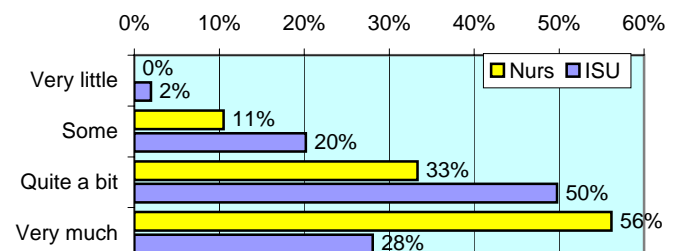
VI. ACADEMIC WORK

How much has your coursework emphasized the following mental activities?

Memorizing facts, ideas or methods from your courses and readings *

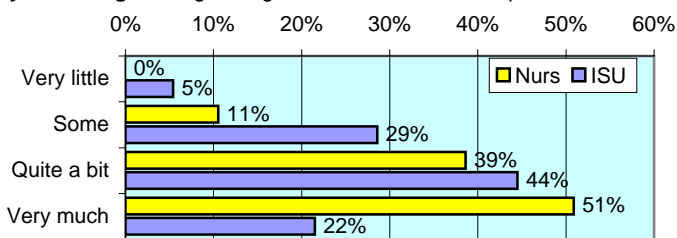


Analyzing the basic elements of an idea, experience or theory *

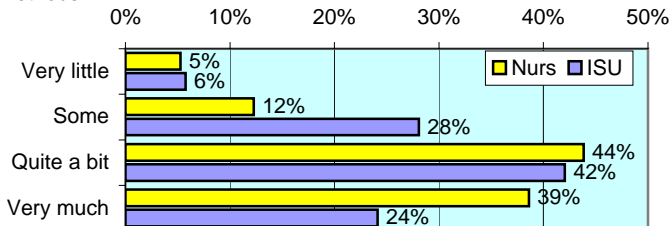


VI. ACADEMIC WORK (continued)

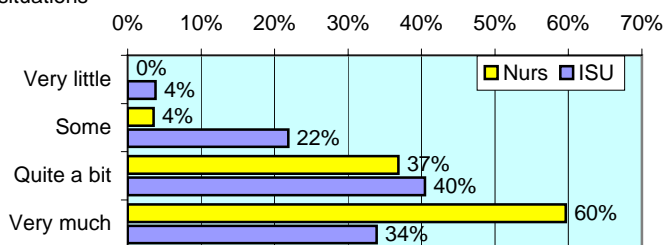
Synthesizing and organizing ideas, information, or experiences *



Making judgments about the value of information, arguments, or methods *



Applying theories or concepts to practical problems or in new situations *



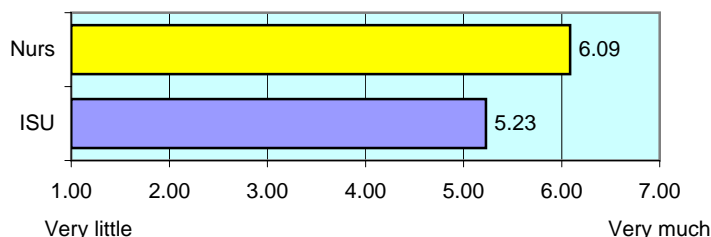
In a typical week, how many homework problem sets do you complete?

Items		None	1-2	3-4	More than 5
Number of problem sets that take you more than an hour to complete	Nurs	18	23	28	32
	ISU	15	35	31	19
Number of problem sets that take you less than an hour to complete *	Nurs	28	44	9	19
	ISU	15	36	25	23

During the current school year, about how often have you done each of the following?

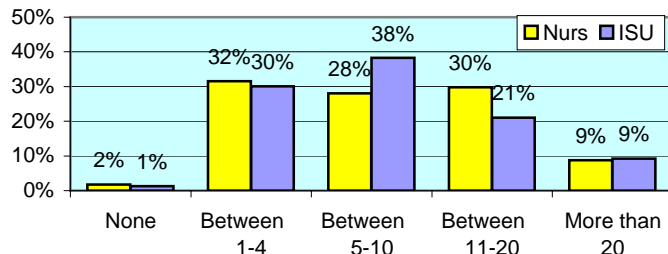
Items		Never	Some-times	Often	Very often
Examined the strengths and weaknesses of your own views on a topic	Nurs	4	35	47	14
	ISU	9	40	33	17
Tried to better understand someone else's views by imagining how an issue looks from his or her perspective	Nurs	0	46	42	12
	ISU	4	38	39	19
Learned something that changed the way you understand an issue or concept	Nurs	4	32	39	26
	ISU	4	40	36	19

Mark the box that best represents the extent to which your examinations during the current school year have challenged you to do your best work * numbers indicate means of 7-point scale

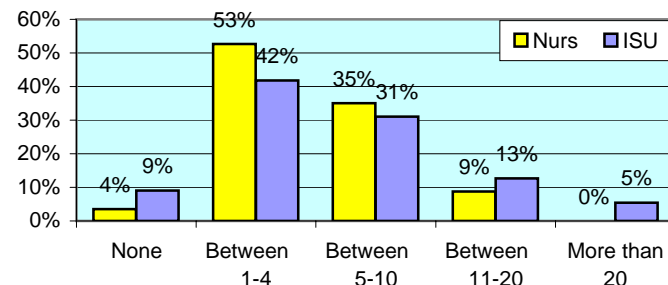


During the current school year, about how much reading and writing have you done?

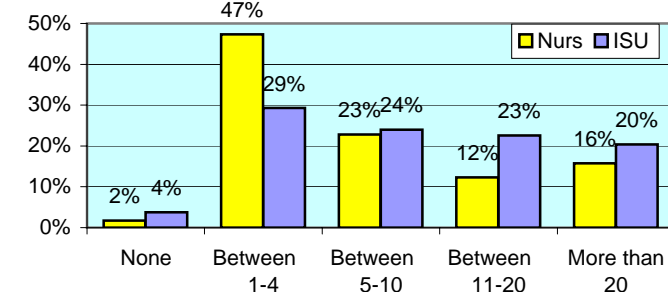
Number of assigned textbooks, books, or book-length packs of course readings



Number of written papers or reports between 5 and 19 pages



Number of written papers or reports of fewer than 5 pages *



VII. PLANS DURING COLLEGE

Which of the following have you done or do you plan to do before you graduate from your institution?

Item		Not decided	Won't do	Plan to do	Done
Practicum, internship, field experience, co-op experience, or clinical assignment *	Nurs	0	0	19	81
	ISU	6	12	23	59
Community service or volunteer work *	Nurs	4	2	12	82
	ISU	10	18	12	60
Participate in a learning community *	Nurs	5	21	7	67
	ISU	14	46	8	32
Worked on a research project with a faculty member outside of course	Nurs	16	51	9	25
	ISU	19	55	8	18
Foreign language coursework	Nurs	7	37	9	47
	ISU	5	47	8	40
Study abroad	Nurs	11	84	4	2
	ISU	12	79	4	5
Independent study or self-designed major	Nurs	9	60	2	30
	ISU	11	59	8	22
Culminating senior experience (thesis, project, etc.) *	Nurs	4	9	44	44
	ISU	13	25	28	35



Office of Strategic Planning, Institutional Research & Effectiveness

419 Rankin Hall, Tel: 237-2305, Fax: 237-4530

<http://irt2.indstate.edu/home/index.htm>