

# Indiana State University

## 2003 vs. 2005 Senior Students Comparison: NSSE Edition

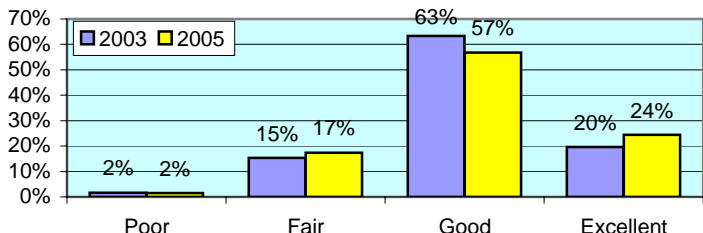
ISU participated in The National Survey of Student Engagement (NSSE) in 2003 and 2005. This report provides comparisons between the 2003 and 2005 NSSE results. The report includes senior students enrolled at ISU in Fall 2002 (256 students) and Fall 2004 (671 students). Separate reports including overall NSSE results for each cohort are available upon request to the ISU community.

**All numbers in this report are percentages unless otherwise stated.**

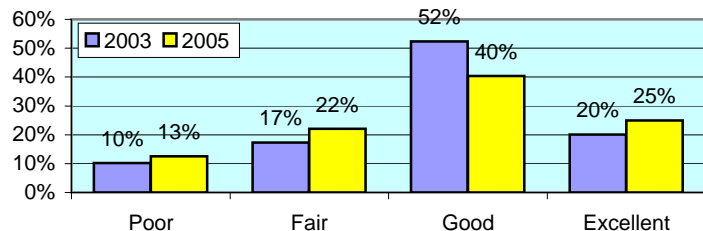
\* item was found statistically significant in mean comparison

### I. ABOUT INSTITUTION

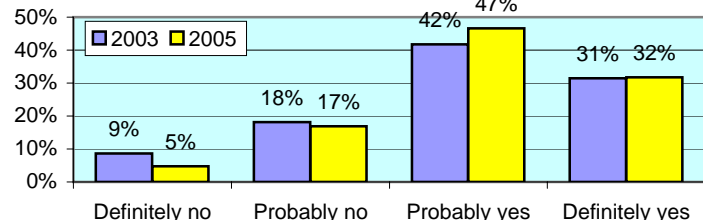
**How would you evaluate your entire educational experience at this institution?**



**Overall, how would you evaluate the quality of academic advising you have received at your institution?**



**If you could start over again, would you go to the same institution you are now attending?**

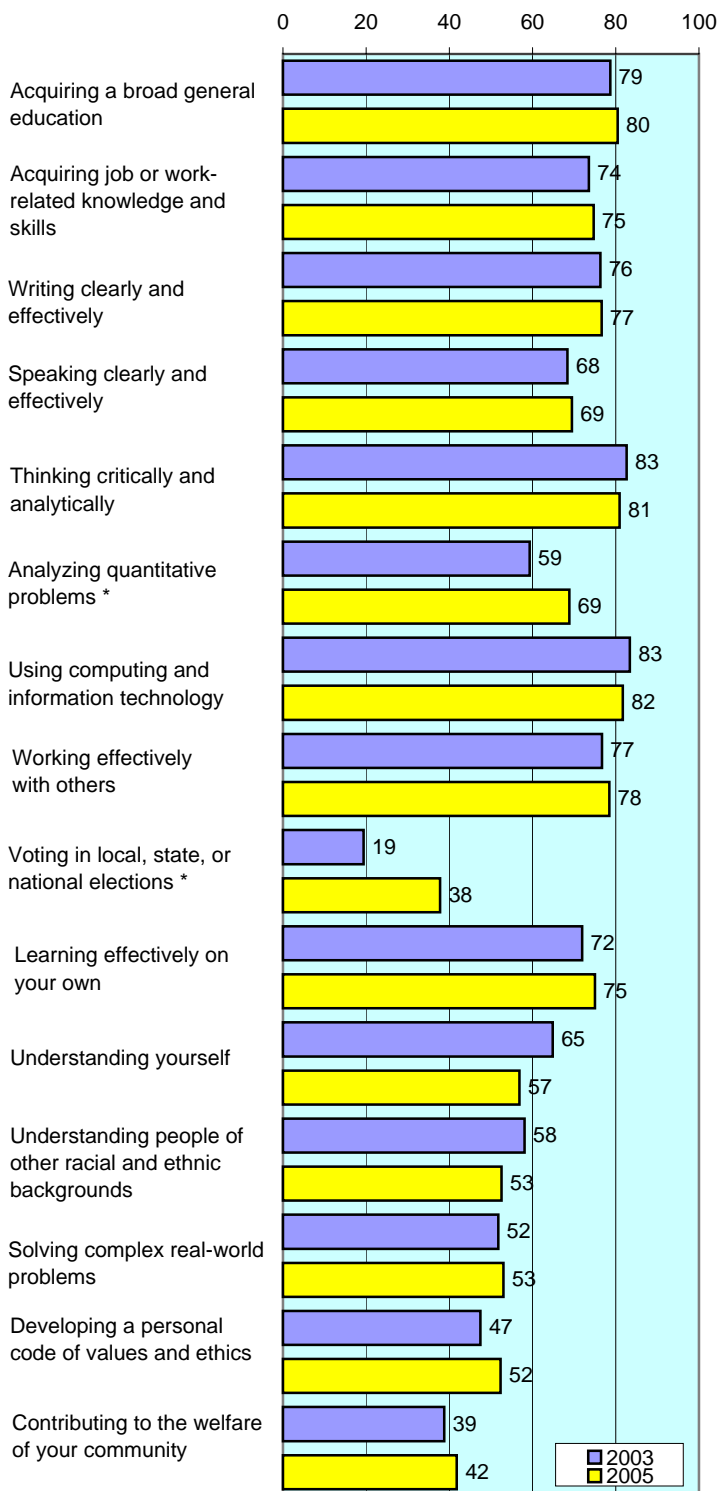


**To what extent does your institution emphasize each of the following?**

Items		Very little	Some	Quite a bit	Very much
Spending significant amounts of time studying and on academic work	2003	3	27	51	19
	2005	3	25	45	27
Providing the support you need to help you succeed academically	2003	5	30	47	17
	2005	5	34	44	17
Encouraging contact among students from different racial/ethnic backgrounds	2003	20	42	26	11
	2005	20	41	28	11
Helping you cope with your non-academic responsibilities	2003	46	35	12	7
	2005	44	36	13	7
Providing the support you need to thrive socially	2003	28	46	21	6
	2005	28	44	21	6
Attending campus events and activities (speakers, performances, etc.)	2003	15	39	36	11
	2005	17	41	32	11
Using computers in academic work	2003	2	7	32	59
	2005	1	11	33	55

**To what extent has your experience at this institution contributed to your knowledge, skills, and personal development in the following?**

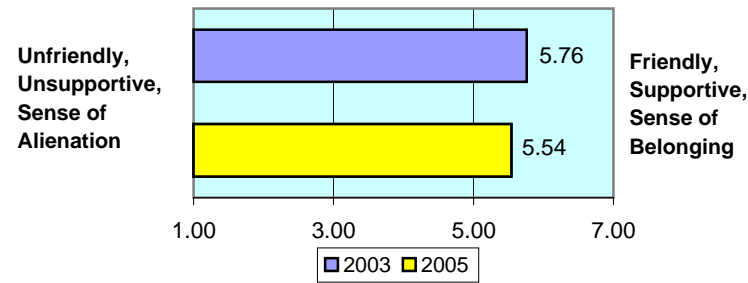
number is combined % who responded either 'very much' or 'quite a bit'



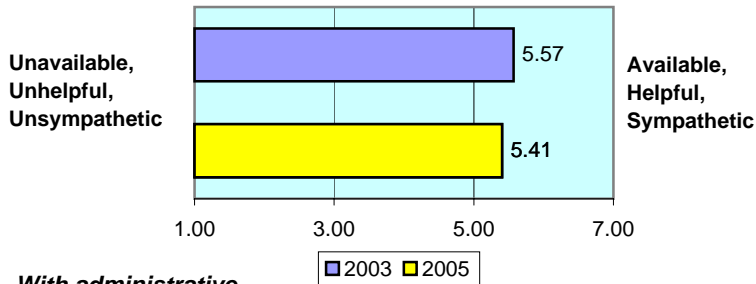
## II. ABOUT RELATIONSHIPS

How would you rate your relationships with people at your institution?

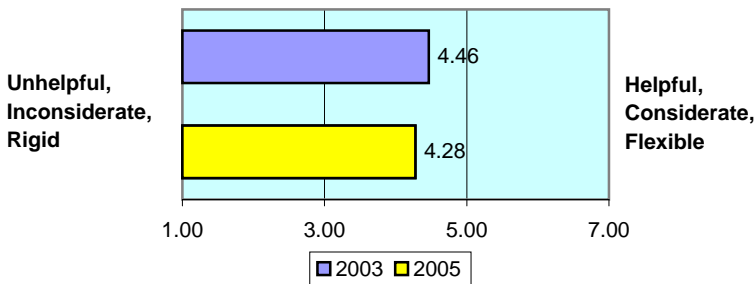
*With other students...* \* numbers indicate means of 7-point scale



*With faculty members...*



*With administrative personnel & offices...*



## III. IN CLASSROOM

How often have you done each of the following?

Items		Never	Some-times	Often	Very often
Asked questions in class or contributed to class discussions	2003	2	20	35	43
	2005	2	20	39	38
Made a class presentation	2003	6	34	36	23
	2005	6	32	38	24
Prepared two or more drafts of a paper or assignment before turning it in	2003	19	35	26	20
	2005	17	38	28	17
Worked on a paper that required integrating ideas from various sources	2003	2	15	45	38
	2005	1	13	44	41
Included diverse perspectives in class discussions or assignments	2003	9	35	38	18
	2005	5	39	34	22
Came to class without completing readings or assignments	2003	23	55	18	4
	2005	25	55	13	7
Put together ideas from different courses for assignments or class discussions	2003	5	39	37	20
	2005	3	33	45	19
Used an electronic medium to discuss or complete an assignment	2003	12	26	33	29
	2005	11	26	26	37
Worked harder than you thought you could to meet an instructor's expectations *	2003	6	46	35	13
	2005	6	36	39	19

## IV. INVOLVEMENT WITH FACULTY

How often have you done each of the following?

Items		Never	Some-times	Often	Very often
Used e-mail to communicate with an instructor *	2003	2	22	33	43
	2005	1	15	32	52
Discussed grades or assignments with an instructor	2003	4	36	36	25
	2005	3	33	36	28
Talked about career plans with a faculty member or advisor	2003	10	45	27	17
	2005	15	41	25	19
Discussed ideas from your classes with faculty outside of class	2003	25	53	14	8
	2005	28	45	17	11
Received prompt feedback from faculty on your performance *	2003	5	36	44	16
	2005	3	31	47	19
Worked with faculty members on activities other than coursework	2003	45	32	13	9
	2005	44	31	17	8

## V. INVOLVEMENT WITH OTHER STUDENTS

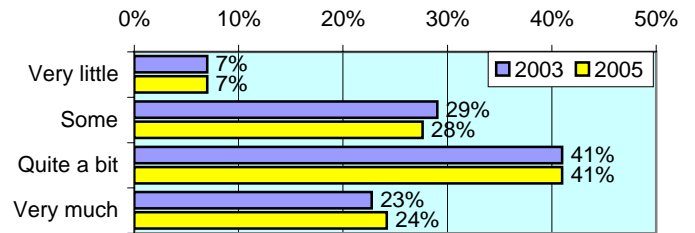
How often have you done each of the following?

Items		Never	Some-times	Often	Very often
Worked with other students on projects during class	2003	11	40	36	13
	2005	10	39	35	17
Worked with classmates outside of class to prepare assignments	2003	9	40	34	17
	2005	8	36	37	18
Tutored or taught other students (paid or voluntary)	2003	46	30	14	11
	2005	42	34	16	9
Discussed ideas from your classes with others outside of class	2003	5	38	36	21
	2005	6	37	38	18
Had serious conversations with students of a different race	2003	14	40	24	22
	2005	15	43	24	19
Had serious conversations with students who have different personal values from yours	2003	11	43	22	24
	2005	12	39	28	21

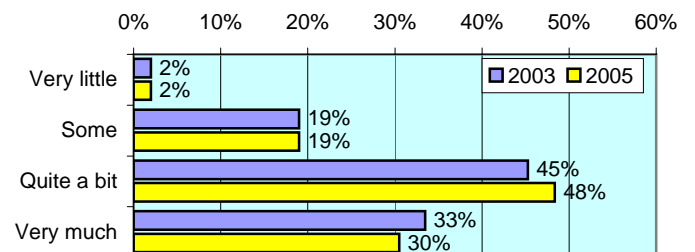
## VI. ACADEMIC WORK

How much has your coursework emphasized the following mental activities?

**Memorizing** facts, ideas or methods from your courses and readings

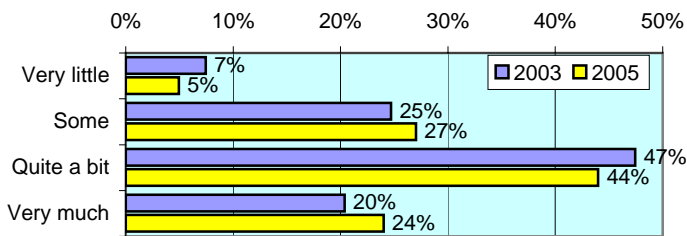


**Analyzing** the basic elements of an idea, experience or theory

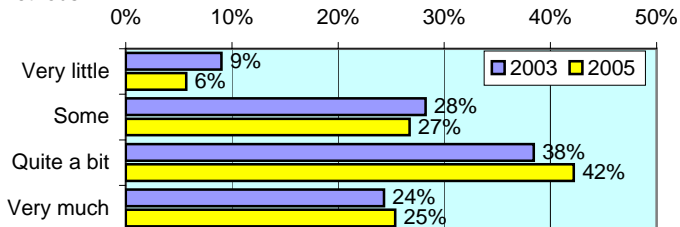


## VI. ACADEMIC WORK (continued)

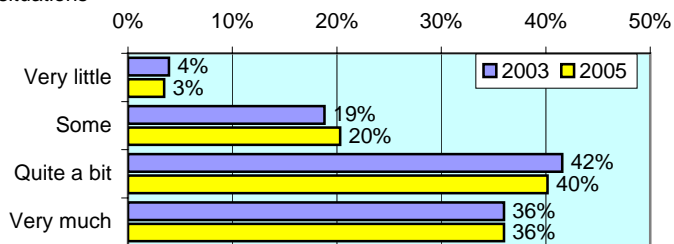
**Synthesizing** and organizing ideas, information, or experiences



**Making judgments** about the value of information, arguments, or methods



**Applying** theories or concepts to practical problems or in new situations

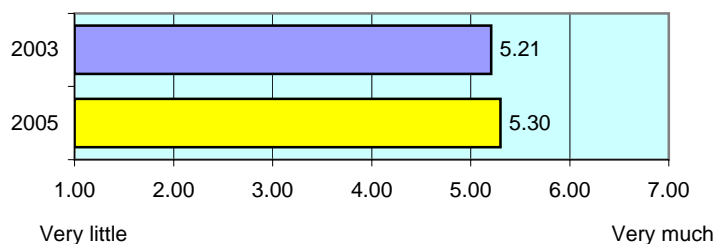


**In a typical week, how many homework problem sets do you complete?**

Items		None	1-2	3-4	More than 5
Number of problem sets that take you more than an hour to complete *	2003	26	38	20	15
	2005	15	34	31	20
Number of problem sets that take you less than an hour to complete	2003	22	34	24	20
	2005	16	37	24	23

**Mark the box that best represents the extent to which your examinations during the current school year have challenged you to do your best work**

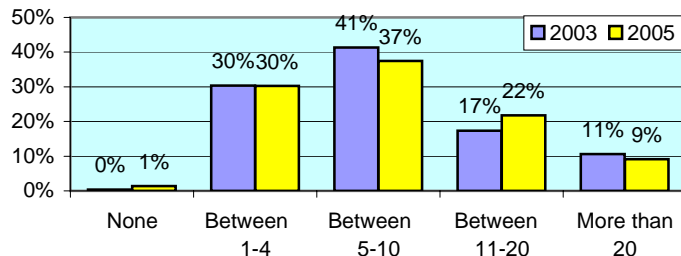
numbers indicate means of 7-point scale



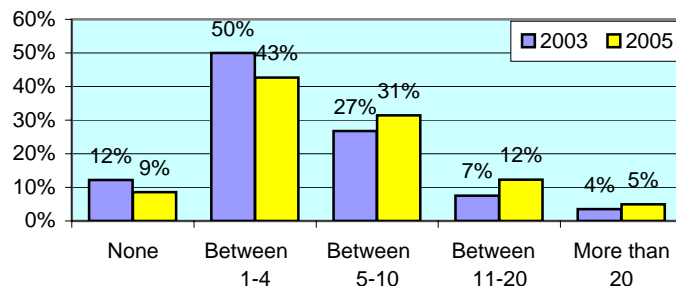
Office of Strategic Planning, Institutional Research & Effectiveness  
419 Rankin Hall, Tel: 237-2305, Fax: 237-4530  
<http://irt2.indstate.edu/home/index.htm>

**During the current school year, about how much reading and writing have you done?**

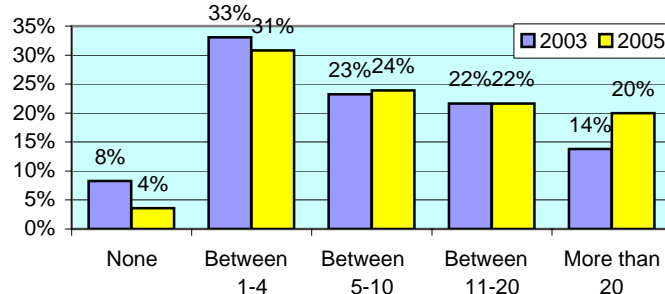
**Number of assigned textbooks, books, or book-length packs of course readings**



**Number of written papers or reports between 5 and 19 pages \***



**Number of written papers or reports of fewer than 5 pages \***



## VII. PLANS DURING COLLEGE

**Which of the following have you done or do you plan to do before you graduate from your institution?**

Item		Response			
		No (2003) / Not decided (2005)	Yes (2003) / Plan to do (2005)	Yes (2003) / Done (2005)	Yes (2003) / Done (2005)
Practicum, internship, field experience, co-op experience, or clinical assignment	2003	6	14	0	80
	2005	6	11	22	61
Community service or volunteer work	2003	11	26	0	63
	2005	10	17	12	62
Participate in a learning community	2003	13	55	0	32
	2005	13	44	8	35
Worked on a research project with a faculty member outside of course	2003	10	63	0	26
	2005	19	55	8	18
Foreign language coursework	2003	9	65	0	25
	2005	5	46	8	41
Study abroad	2003	5	85	0	10
	2005	12	80	4	5
Independent study or self-designed major	2003	5	66	0	29
	2005	10	59	8	23
Culminating senior experience (thesis, project, etc.)	2003	9	42	0	49
	2005	12	24	29	35