

Indiana State University

2005 Senior Student Profile: NSSE Edition

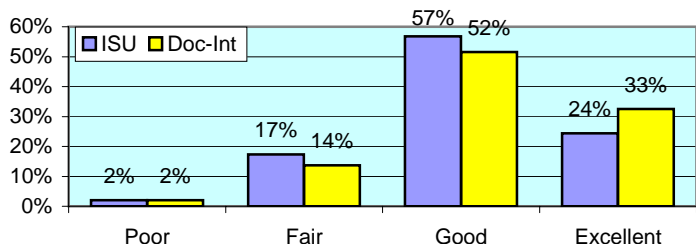
The National Survey of Student Engagement (NSSE) was administered to randomly selected Fall 2004 seniors in Spring 2005. The NSSE survey is designed to examine various aspects of a student's collegiate experience. Of the 1,277 seniors given the opportunity to participate, 671 students completed the survey via the internet, for a response rate of 53%. In addition to the results compiled for ISU students, this report includes the NSSE results of senior students enrolled at other doctoral institutions, which facilitates comparison with institutions similar to ISU.

All numbers in this report are percentages unless otherwise stated.

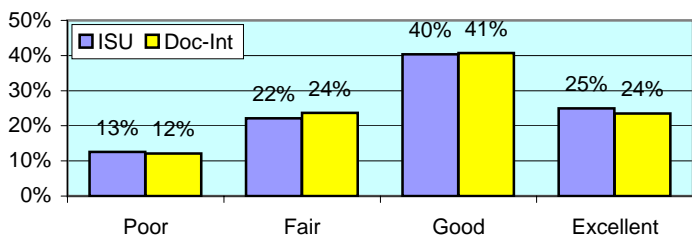
* item was found statistically significant in mean comparison

I. ABOUT INSTITUTION

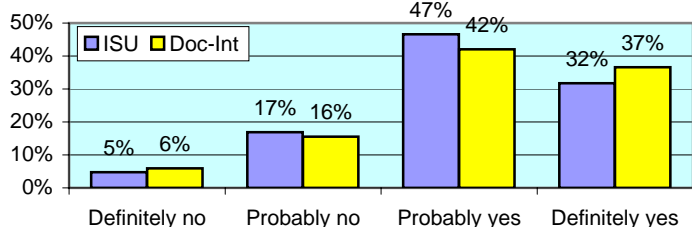
How would you evaluate your entire educational experience at this institution? *



Overall, how would you evaluate the quality of academic advising you have received at your institution?



If you could start over again, would you go to the same institution you are now attending?

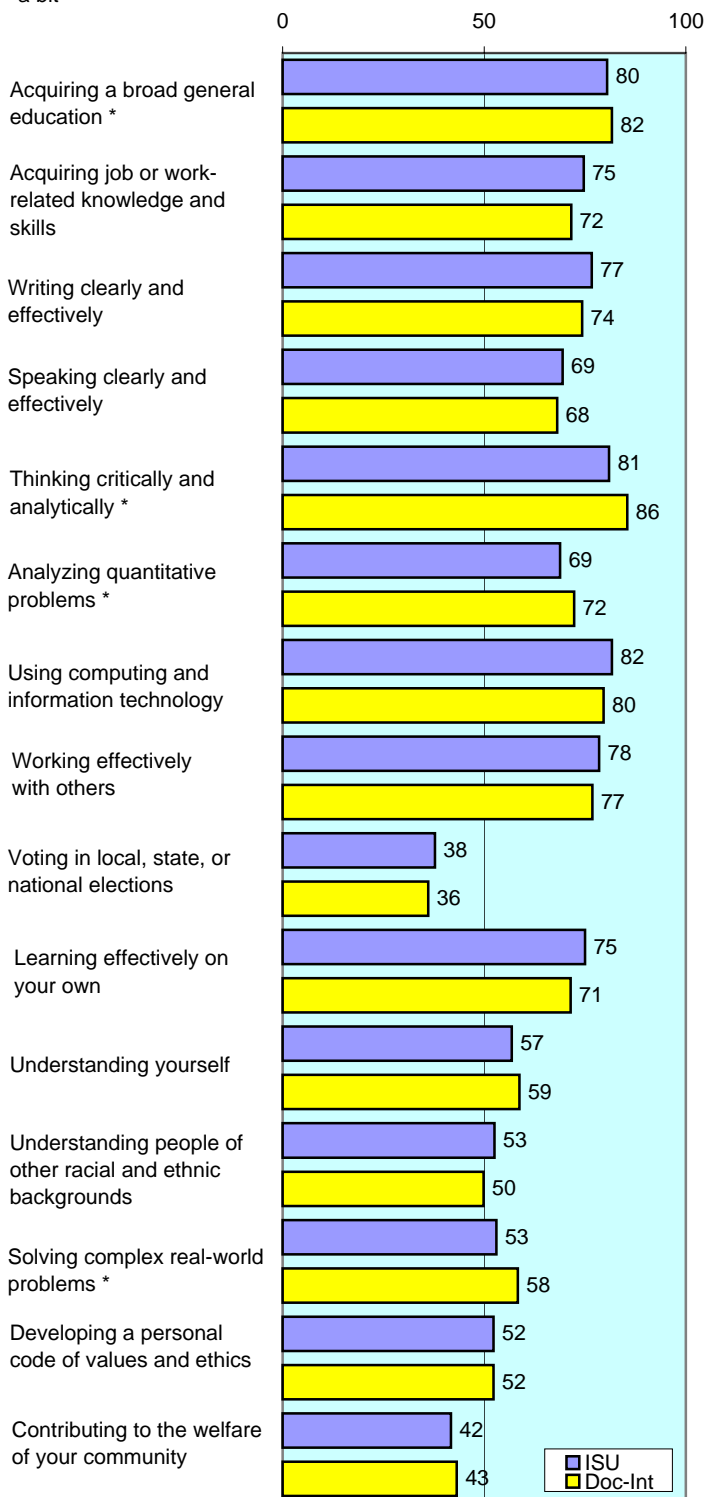


To what extent does your institution emphasize each of the following?

Items		Very little	Some	Quite a bit	Very much
Spending significant amounts of time studying and on academic work *	ISU	3	25	45	27
	Doc-Int	3	19	47	31
Providing the support you need to help you succeed academically *	ISU	5	34	44	17
	Doc-Int	5	29	44	22
Encouraging contact among students from different racial/ethnic backgrounds	ISU	20	41	28	11
	Doc-Int	21	37	27	14
Helping you cope with your non-academic responsibilities	ISU	44	36	13	7
	Doc-Int	42	36	16	6
Providing the support you need to thrive socially	ISU	28	44	21	6
	Doc-Int	30	41	21	7
Attending campus events and activities (speakers, performances, etc.) *	ISU	17	41	32	11
	Doc-Int	16	36	32	16
Using computers in academic work	ISU	1	11	33	55
	Doc-Int	2	9	29	60

To what extent has your experience at this institution contributed to your knowledge, skills, and personal development in the following?

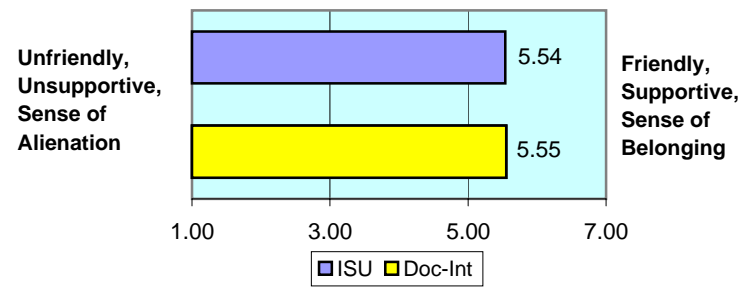
number is combined % who responded either 'very much' or 'quite a bit'



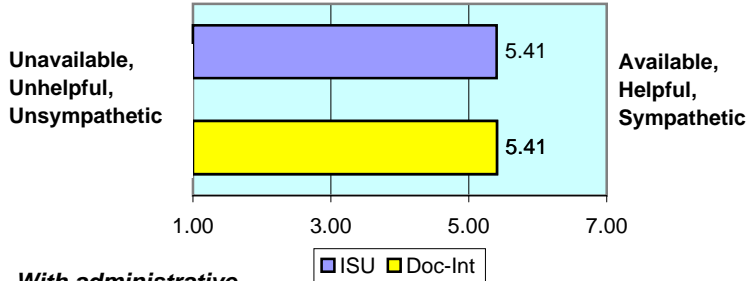
II. ABOUT RELATIONSHIPS

How would you rate your relationships with people at your institution?

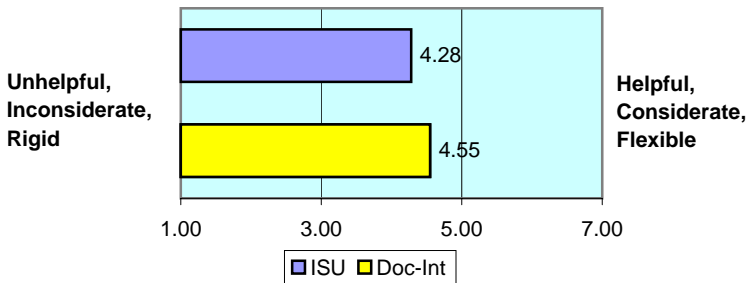
With other students... numbers indicate means of 7-point scale



With faculty members...



*With administrative personnel & offices... **



III. IN CLASSROOM

How often have you done each of the following?

Items		Never	Some-times	Often	Very often
Asked questions in class or contributed to class discussions	ISU	2	20	39	38
	Doc-Int	2	27	33	39
Made a class presentation	ISU	6	32	38	24
	Doc-Int	4	33	37	25
Prepared two or more drafts of a paper or assignment before turning it in	ISU	17	38	28	17
	Doc-Int	15	38	26	21
Worked on a paper that required integrating ideas from various sources *	ISU	1	13	44	41
	Doc-Int	1	12	38	49
Included diverse perspectives in class discussions or assignments	ISU	5	39	34	22
	Doc-Int	8	33	33	26
Came to class without completing readings or assignments *	ISU	25	55	13	7
	Doc-Int	18	60	16	6
Put together ideas from different courses for assignments or class discussions *	ISU	3	33	45	19
	Doc-Int	3	27	45	25
Used an electronic medium to discuss or complete an assignment	ISU	11	26	26	37
	Doc-Int	11	26	27	35
Worked harder than you thought you could to meet an instructor's expectations	ISU	6	36	39	19
	Doc-Int	6	35	39	20

IV. INVOLVEMENT WITH FACULTY

How often have you done each of the following?

Items		Never	Some-times	Often	Very often
Used e-mail to communicate with an instructor	ISU	1	15	32	52
	Doc-Int	1	17	32	50
Discussed grades or assignments with an instructor	ISU	3	33	36	28
	Doc-Int	4	36	34	27
Talked about career plans with a faculty member or advisor *	ISU	15	41	25	19
	Doc-Int	17	43	24	16
Discussed ideas from your classes with faculty outside of class	ISU	28	45	17	11
	Doc-Int	28	46	16	9
Received prompt feedback from faculty on your performance	ISU	3	31	47	19
	Doc-Int	3	27	48	22
Worked with faculty members on activities other than coursework	ISU	44	31	17	8
	Doc-Int	48	30	14	8

V. INVOLVEMENT WITH OTHER STUDENTS

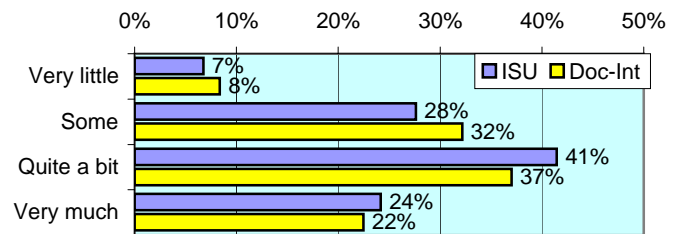
How often have you done each of the following?

Items		Never	Some-times	Often	Very often
Worked with other students on projects during class	ISU	10	39	35	17
	Doc-Int	8	42	31	18
Worked with classmates outside of class to prepare assignments *	ISU	8	36	37	18
	Doc-Int	6	31	35	27
Tutored or taught other students (paid or voluntary)	ISU	42	34	16	9
	Doc-Int	41	36	13	10
Discussed ideas from your classes with others outside of class *	ISU	6	37	38	18
	Doc-Int	4	33	39	24
Had serious conversations with students of a different race *	ISU	15	43	24	19
	Doc-Int	13	33	27	26
Had serious conversations with students who have different personal values from yours *	ISU	12	39	28	21
	Doc-Int	10	34	29	27

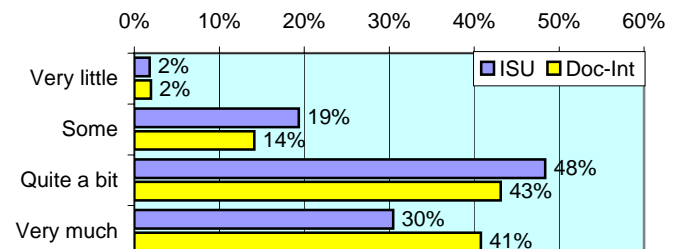
VI. ACADEMIC WORK

How much has your coursework emphasized the following mental activities?

Memorizing facts, ideas or methods from your courses and readings *

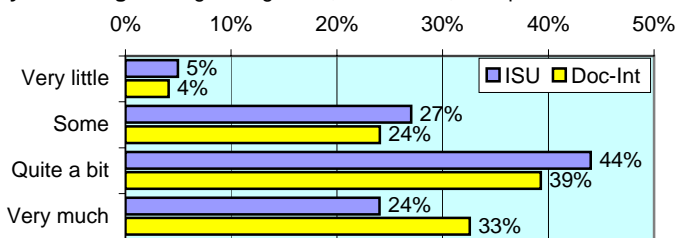


Analyzing the basic elements of an idea, experience or theory *

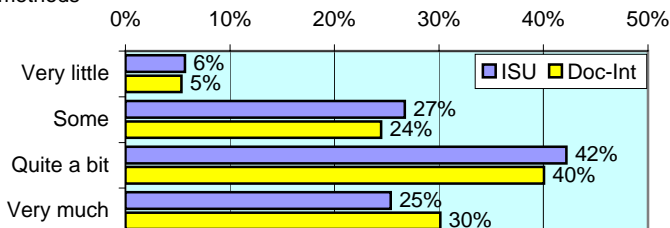


VI. ACADEMIC WORK (continued)

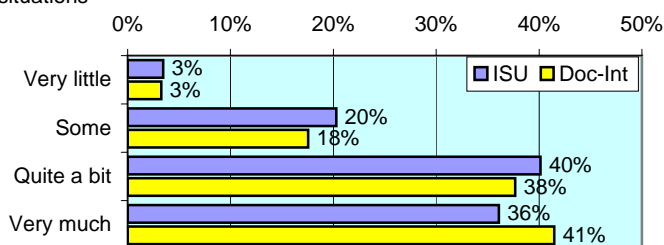
Synthesizing and organizing ideas, information, or experiences *



Making judgments about the value of information, arguments, or methods *



Applying theories or concepts to practical problems or in new situations *



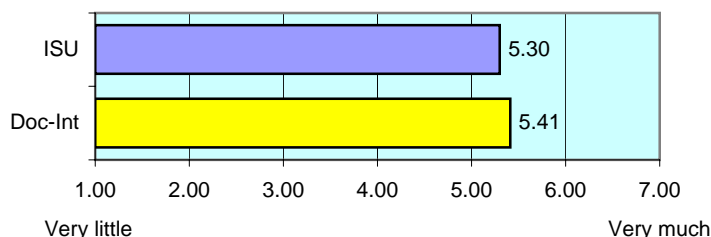
In a typical week, how many homework problem sets do you complete?

Items		None	1-2	3-4	More than 5
Number of problem sets that take you more than an hour to complete	ISU	15	34	31	20
	Doc-Int	18	35	29	19
Number of problem sets that take you less than an hour to complete *	ISU	16	37	24	23
	Doc-Int	26	37	20	18

During the current school year, about how often have you done each of the following?

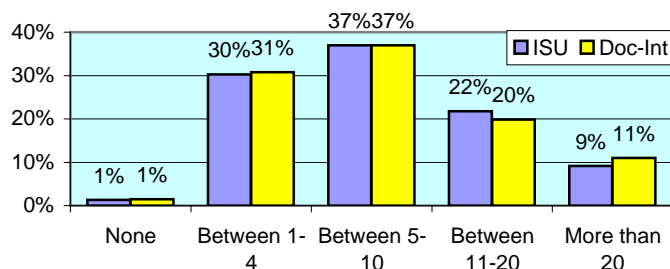
Items		Never	Some- times	Often	Very often
Examined the strengths and weaknesses of your own views on a topic	ISU	9	40	35	16
	Doc-Int	8	37	35	19
Tried to better understand someone else's views by imagining how an issue looks from his or her perspective *	ISU	4	39	39	18
	Doc-Int	5	33	38	24
Learned something that changed the way you understand an issue or concept *	ISU	4	40	37	19
	Doc-Int	3	34	40	24

Mark the box that best represents the extent to which your examinations during the current school year have challenged you to do your best work * numbers indicate means of 7-point scale

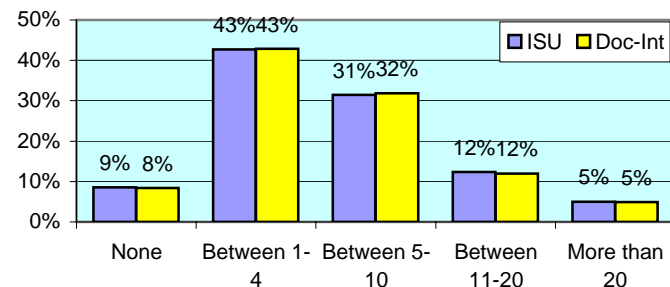


During the current school year, about how much reading and writing have you done?

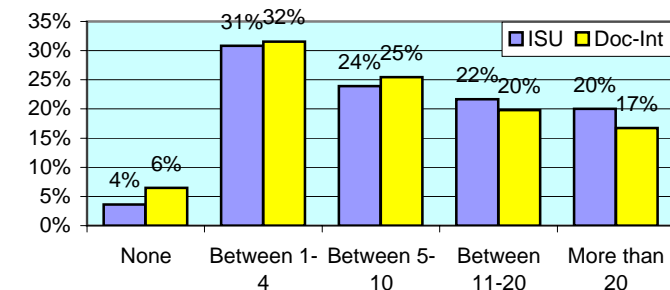
Number of assigned textbooks, books, or book-length packs of course readings



Number of written papers or reports between 5 and 19 pages



Number of written papers or reports of fewer than 5 pages *



VII. PLANS DURING COLLEGE

Which of the following have you done or do you plan to do before you graduate from your institution?

Item		Not decided	Won't do	Plan to do	Done
Practicum, internship, field experience, co-op experience, or clinical assignment *	ISU	6	11	22	61
	Doc-Int	8	16	23	53
Community service or volunteer work	ISU	10	17	12	62
	Doc-Int	10	18	13	60
Participate in a learning community *	ISU	13	44	8	35
	Doc-Int	15	52	8	26
Worked on a research project with a faculty member outside of course	ISU	19	55	8	18
	Doc-Int	16	52	12	20
Foreign language coursework	ISU	5	46	8	41
	Doc-Int	8	46	9	37
Study abroad *	ISU	12	80	4	5
	Doc-Int	13	65	8	14
Independent study or self-designed major	ISU	10	59	8	23
	Doc-Int	11	60	9	20
Culminating senior experience (thesis, project, etc.)	ISU	12	24	29	35
	Doc-Int	10	27	28	35



Office of Strategic Planning, Institutional Research & Effectiveness

419 Rankin Hall, Tel: 237-2305, Fax: 237-4530

<http://irt2.indstate.edu/home/index.htm>