

# Indiana State University

## 2005 NSSE Senior Profile: College of Health & Human Performance

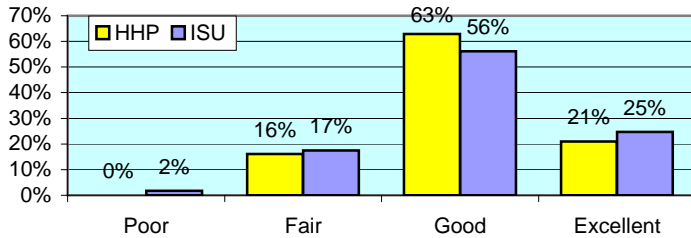
The National Survey of Student Engagement (NSSE) was administered to randomly selected ISU students in Spring 2005. The NSSE survey is designed to examine various aspects of a student's collegiate experience. Of the 671 ISU Senior students who completed the survey via the internet, 63 were from College of Health & Human Performance (HHP). This report presents comparisons between HHP students and the rest of respondents. Separate reports including overall NSSE results are available upon request to the ISU campus community.

**All numbers in this report are percentages unless otherwise stated.**

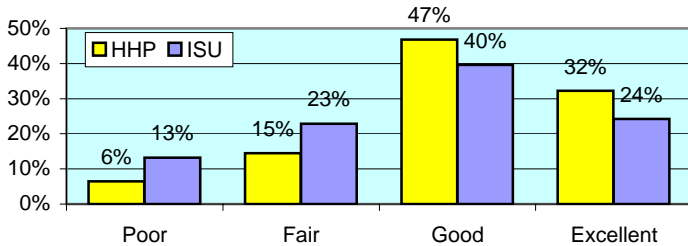
\* item was found statistically significant in mean comparison

### I. ABOUT INSTITUTION

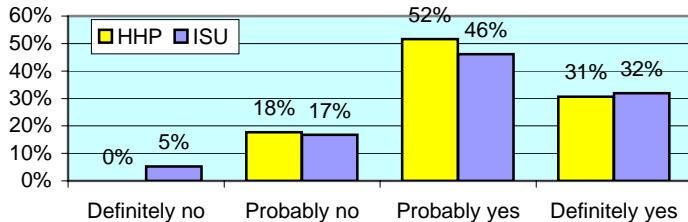
**How would you evaluate your entire educational experience at this institution?**



**Overall, how would you evaluate the quality of academic advising you have received at your institution? \***



**If you could start over again, would you go to the same institution you are now attending?**

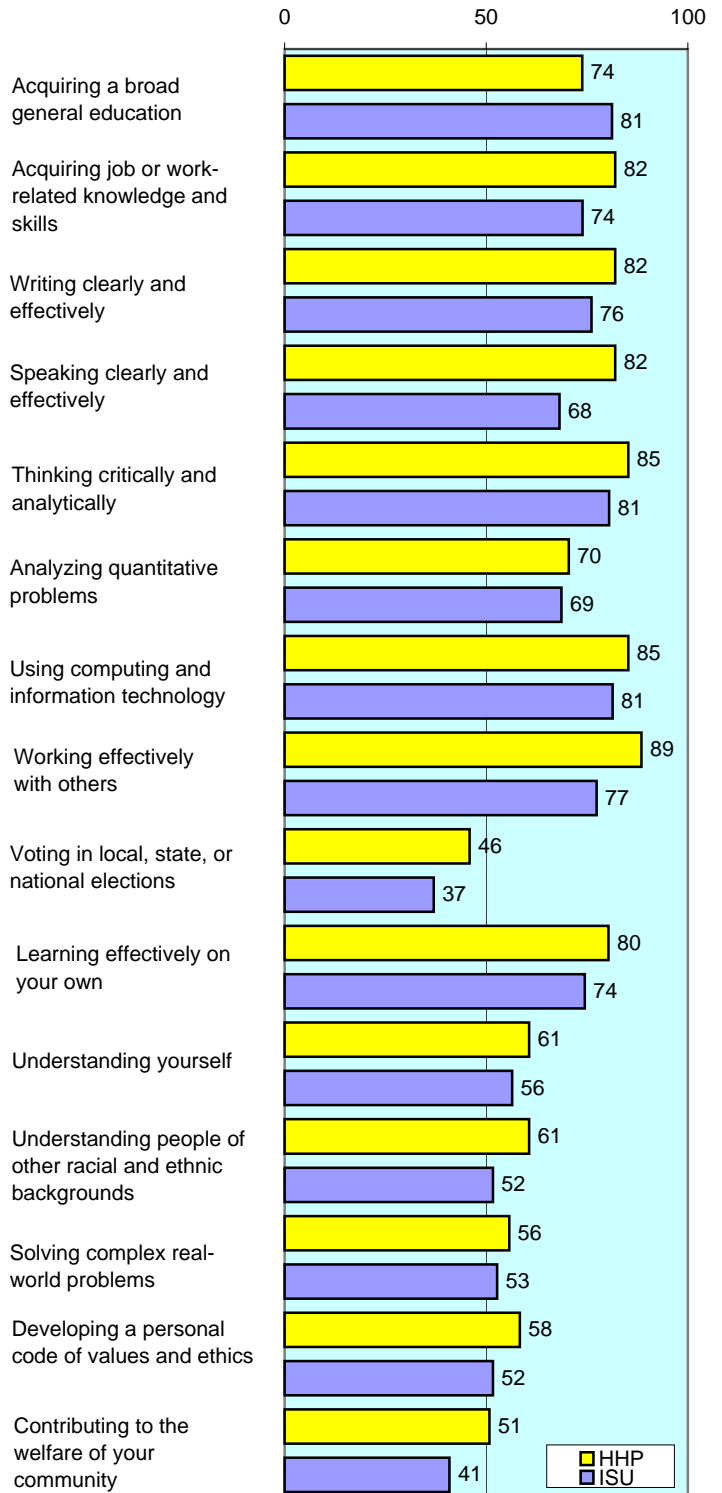


**To what extent does your institution emphasize each of the following?**

Items		Very little	Some	Quite a bit	Very much
Spending significant amounts of time studying and on academic work	HHP	2	32	45	21
	ISU	3	24	45	28
Providing the support you need to help you succeed academically	HHP	0	40	47	13
	ISU	5	33	44	17
Encouraging contact among students from different racial/ethnic backgrounds	HHP	18	40	34	8
	ISU	21	41	27	12
Helping you cope with your non-academic responsibilities	HHP	34	40	16	10
	ISU	45	36	13	6
Providing the support you need to thrive socially	HHP	26	44	21	10
	ISU	29	44	21	6
Attending campus events and activities (speakers, performances, etc.)	HHP	19	50	21	10
	ISU	16	40	33	11
Using computers in academic work	HHP	2	10	40	48
	ISU	1	11	33	56

**To what extent has your experience at this institution contributed to your knowledge, skills, and personal development in the following?**

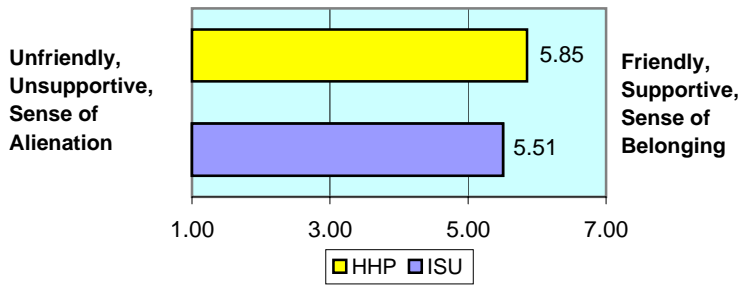
number is combined % who responded either 'very much' or 'quite a bit'



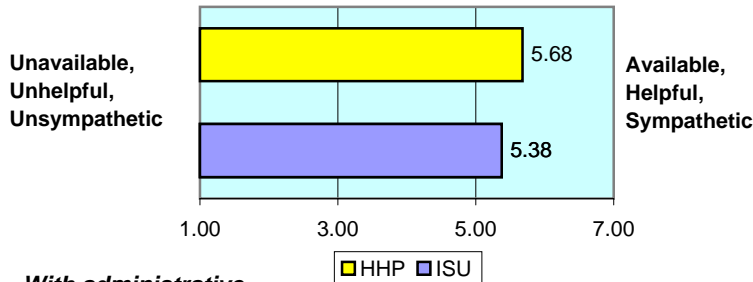
## II. ABOUT RELATIONSHIPS

How would you rate your relationships with people at your institution?

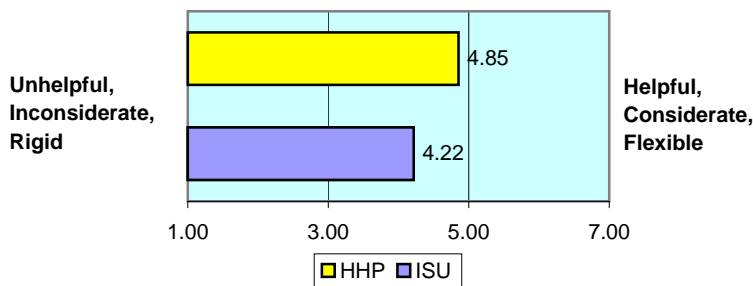
*With other students...*\* numbers indicate means of 7-point scale



*With faculty members...*



*With administrative personnel & offices...* \*



## III. IN CLASSROOM

How often have you done each of the following?

Items		Never	Some-times	Often	Very often
Asked questions in class or contributed to class discussions	HHP	5	17	44	33
	ISU	2	21	38	39
Made a class presentation	HHP	6	25	46	22
	ISU	6	33	37	24
Prepared two or more drafts of a paper or assignment before turning it in *	HHP	29	33	25	13
	ISU	15	38	29	18
Worked on a paper that required integrating ideas from various sources	HHP	2	13	52	33
	ISU	1	13	43	42
Included diverse perspectives in class discussions or assignments	HHP	10	35	37	19
	ISU	5	39	34	22
Came to class without completing readings or assignments	HHP	24	49	22	5
	ISU	25	56	12	8
Put together ideas from different courses for assignments or class discussions	HHP	2	25	54	19
	ISU	4	33	44	19
Used an electronic medium to discuss or complete an assignment	HHP	10	24	25	41
	ISU	11	27	26	36
Worked harder than you thought you could to meet an instructor's expectations	HHP	6	37	35	22
	ISU	6	36	40	19

## IV. INVOLVEMENT WITH FACULTY

How often have you done each of the following?

Items		Never	Some-times	Often	Very often
Used e-mail to communicate with an instructor	HHP	0	17	33	49
	ISU	1	14	32	53
Discussed grades or assignments with an instructor	HHP	2	32	35	32
	ISU	3	33	36	27
Talked about career plans with a faculty member or advisor	HHP	5	49	22	24
	ISU	16	40	25	19
Discussed ideas from your classes with faculty outside of class	HHP	27	40	29	5
	ISU	28	46	15	11
Received prompt feedback from faculty on your performance	HHP	3	30	49	17
	ISU	3	31	47	19
Worked with faculty members on activities other than coursework	HHP	35	30	27	8
	ISU	45	32	16	8

## V. INVOLVEMENT WITH OTHER STUDENTS

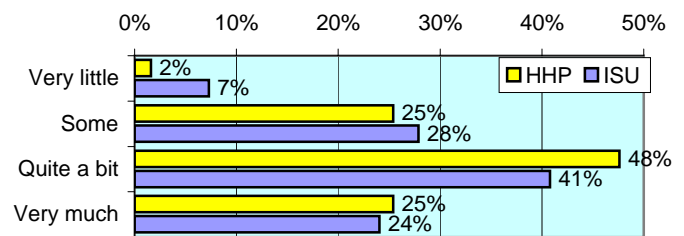
How often have you done each of the following?

Items		Never	Some-times	Often	Very often
Worked with other students on projects during class	HHP	10	35	44	11
	ISU	10	39	34	17
Worked with classmates outside of class to prepare assignments	HHP	14	33	40	13
	ISU	8	37	37	18
Tutored or taught other students (paid or voluntary)	HHP	34	38	17	11
	ISU	42	34	15	9
Discussed ideas from your classes with others outside of class	HHP	13	37	35	16
	ISU	5	38	38	19
Had serious conversations with students of a different race	HHP	16	43	24	17
	ISU	15	43	24	19
Had serious conversations with students who have different personal values from yours	HHP	14	41	25	19
	ISU	12	38	28	22

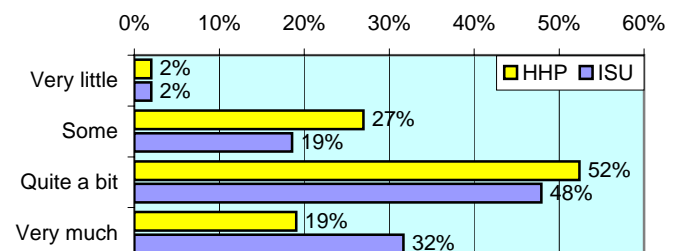
## VI. ACADEMIC WORK

How much has your coursework emphasized the following mental activities?

**Memorizing** facts, ideas or methods from your courses and readings

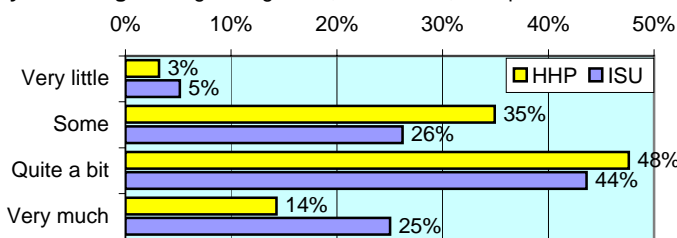


**Analyzing** the basic elements of an idea, experience or theory \*

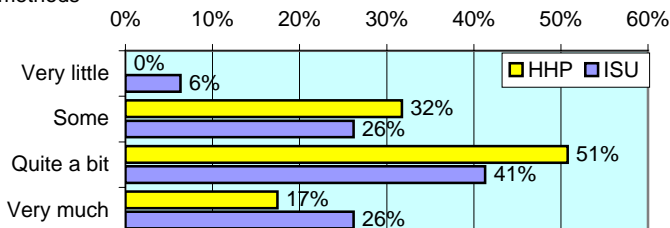


## VI. ACADEMIC WORK (continued)

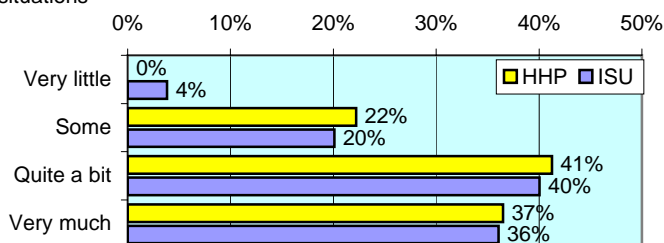
**Synthesizing** and organizing ideas, information, or experiences



**Making judgments** about the value of information, arguments, or methods



**Applying** theories or concepts to practical problems or in new situations



**In a typical week, how many homework problem sets do you complete?**

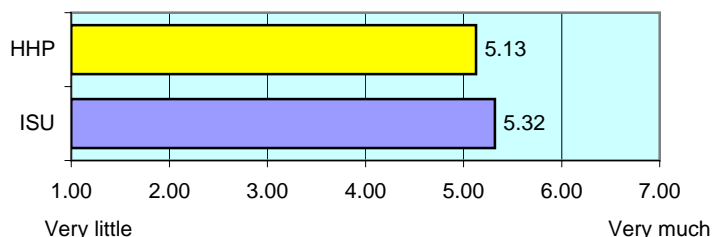
Items		None	1-2	3-4	More than 5
Number of problem sets that take you more than an hour to complete	HHP	11	38	37	14
	ISU	16	34	30	20
Number of problem sets that take you less than an hour to complete	HHP	6	51	19	24
	ISU	17	35	25	23

**During the current school year, about how often have you done each of the following?**

Items		Never	Some-times	Often	Very often
Examined the strengths and weaknesses of your own views on a topic *	HHP	13	55	21	11
	ISU	9	38	36	17
Tried to better understand someone else's views by imagining how an issue looks from his or her perspective	HHP	6	45	35	13
	ISU	4	38	39	19
Learned something that changed the way you understand an issue or concept	HHP	6	39	37	18
	ISU	4	40	37	20

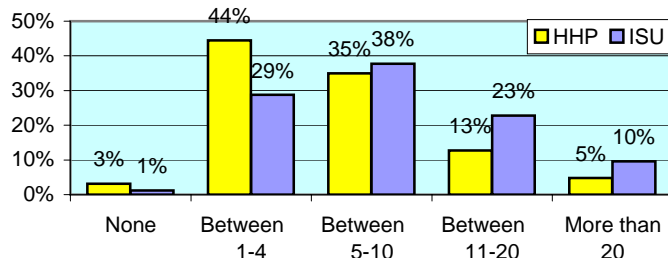
**Mark the box that best represents the extent to which your examinations during the current school year have challenged you to do your best work**

numbers indicate means of 7-point scale

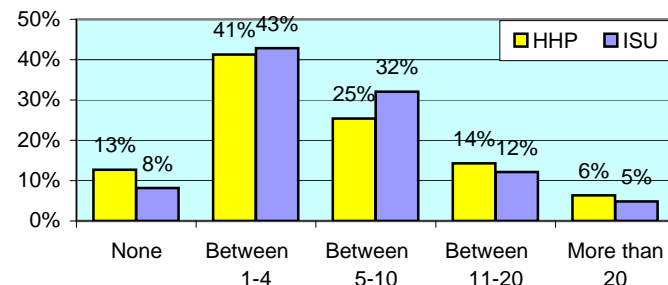


**During the current school year, about how much reading and writing have you done?**

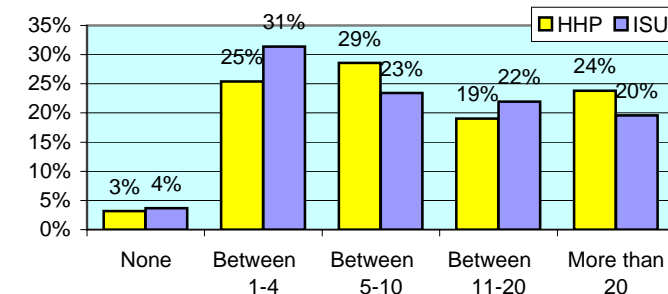
**Number of assigned textbooks, books, or book-length packs of course readings \***



**Number of written papers or reports between 5 and 19 pages**



**Number of written papers or reports of fewer than 5 pages**



## VII. PLANS DURING COLLEGE

**Which of the following have you done or do you plan to do before you graduate from your institution?**

Item		Not decided	Won't do	Plan to do	Done
Practicum, internship, field experience, co-op experience, or clinical assignment *	HHP	2	0	37	61
	ISU	6	12	21	61
Community service or volunteer work *	HHP	8	5	18	69
	ISU	10	18	11	61
Participate in a learning community	HHP	11	42	15	32
	ISU	13	44	8	35
Worked on a research project with a faculty member outside of course	HHP	23	50	11	16
	ISU	19	55	8	18
Foreign language coursework	HHP	5	47	11	37
	ISU	5	46	8	41
Study abroad	HHP	11	82	5	2
	ISU	12	79	4	5
Independent study or self-designed major	HHP	11	63	3	23
	ISU	10	58	8	23
Culminating senior experience (thesis, project, etc.) *	HHP	24	29	31	16
	ISU	11	23	29	37



Office of Strategic Planning, Institutional Research & Effectiveness

419 Rankin Hall, Tel: 237-2305, Fax: 237-4530

<http://irt2.indstate.edu/home/index.htm>