

# Indiana State University

## 2005 NSSE Senior Profile: College of Education

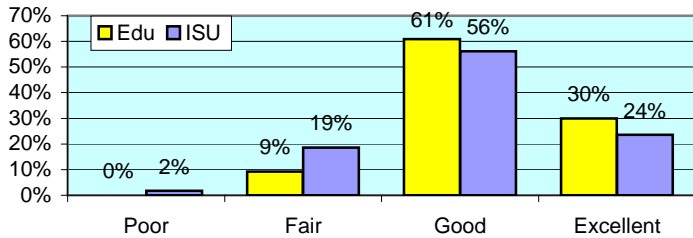
The National Survey of Student Engagement (NSSE) was administered to randomly selected ISU students in Spring 2005. The NSSE survey is designed to examine various aspects of a student's collegiate experience. Of the 671 ISU Senior students who completed the survey via the internet, 87 were from College of Education. This report presents comparisons between College of Education students and the rest of respondents. Separate reports including overall NSSE results are available upon request to the ISU campus community.

**All numbers in this report are percentages unless otherwise stated.**

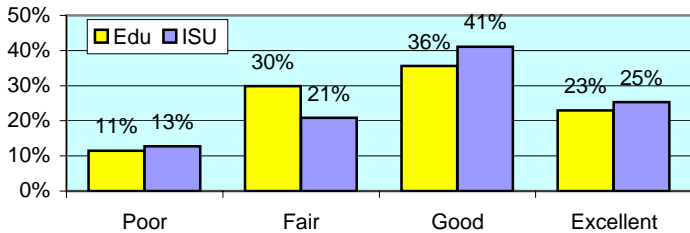
\* item was found statistically significant in mean comparison

### I. ABOUT INSTITUTION

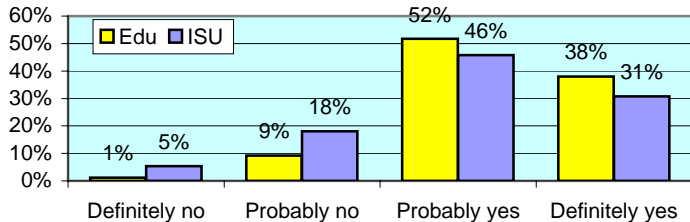
**How would you evaluate your entire educational experience at this institution? \***



**Overall, how would you evaluate the quality of academic advising you have received at your institution?**



**If you could start over again, would you go to the same institution you are now attending? \***

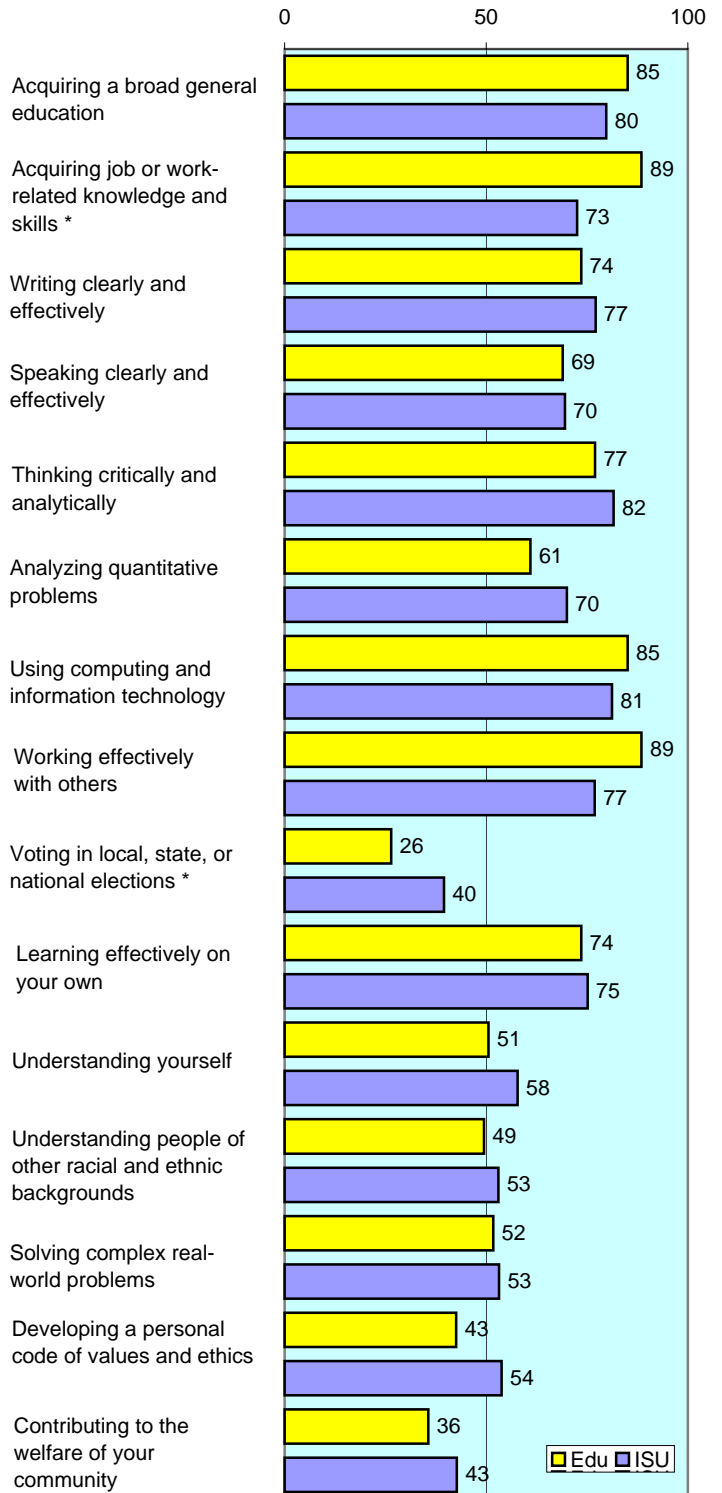


**To what extent does your institution emphasize each of the following?**

Items		Very little	Some	Quite a bit	Very much
		Edu	1	23	52
Spending significant amounts of time studying and on academic work	ISU	3	25	44	27
Providing the support you need to help you succeed academically	Edu	1	33	48	17
	ISU	5	34	44	17
Encouraging contact among students from different racial/ethnic backgrounds	Edu	23	39	28	10
	ISU	20	41	28	12
Helping you cope with your non-academic responsibilities	Edu	47	36	13	5
	ISU	43	36	13	7
Providing the support you need to thrive socially	Edu	22	57	15	6
	ISU	29	42	22	6
Attending campus events and activities (speakers, performances, etc.)	Edu	15	52	28	6
	ISU	17	40	32	11
Using computers in academic work	Edu	0	7	37	56
	ISU	1	11	33	55

**To what extent has your experience at this institution contributed to your knowledge, skills, and personal development in the following?**

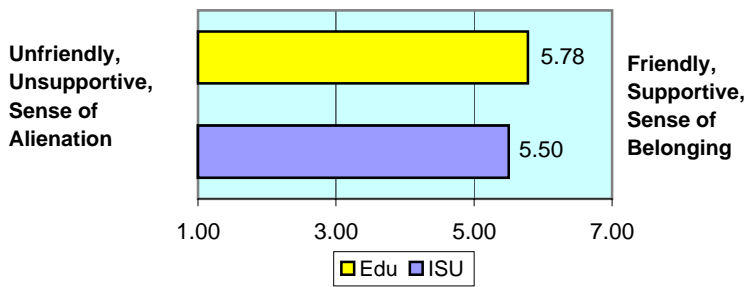
number is combined % who responded either 'very much' or 'quite a bit'



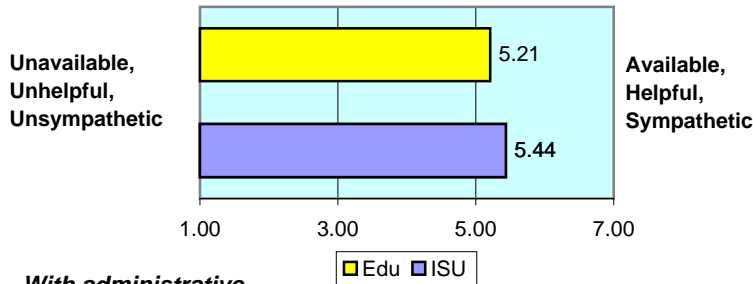
## II. ABOUT RELATIONSHIPS

How would you rate your relationships with people at your institution?

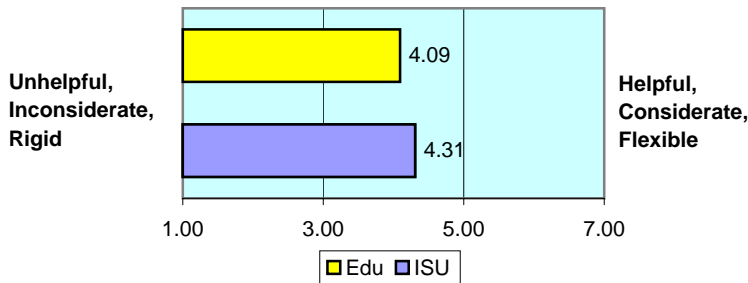
*With other students...\** numbers indicate means of 7-point scale



*With faculty members...*



*With administrative personnel & offices...*



## III. IN CLASSROOM

How often have you done each of the following?

Items		Never	Some-times	Often	Very often
Asked questions in class or contributed to class discussions	Edu	1	17	38	44
	ISU	3	21	39	38
Made a class presentation *	Edu	0	23	52	25
	ISU	7	34	36	24
Prepared two or more drafts of a paper or assignment before turning it in	Edu	16	40	34	9
	ISU	17	38	27	18
Worked on a paper that required integrating ideas from various sources	Edu	1	16	51	32
	ISU	1	13	43	43
Included diverse perspectives in class discussions or assignments	Edu	2	37	40	21
	ISU	6	39	33	22
Came to class without completing readings or assignments	Edu	15	72	8	5
	ISU	26	53	13	8
Put together ideas from different courses for assignments or class discussions	Edu	6	28	48	18
	ISU	3	33	45	19
Used an electronic medium to discuss or complete an assignment *	Edu	5	20	31	45
	ISU	12	28	25	35
Worked harder than you thought you could to meet an instructor's expectations	Edu	3	39	43	15
	ISU	6	36	39	19

## IV. INVOLVEMENT WITH FACULTY

How often have you done each of the following?

Items		Never	Some-times	Often	Very often
Used e-mail to communicate with an instructor *	Edu	1	6	31	62
	ISU	1	16	33	51
Discussed grades or assignments with an instructor	Edu	5	36	25	34
	ISU	3	33	38	27
Talked about career plans with a faculty member or advisor	Edu	17	44	22	17
	ISU	14	41	26	19
Discussed ideas from your classes with faculty outside of class *	Edu	36	44	15	6
	ISU	26	45	17	12
Received prompt feedback from faculty on your performance	Edu	1	32	48	18
	ISU	3	31	47	19
Worked with faculty members on activities other than coursework	Edu	49	33	11	6
	ISU	43	31	18	8

## V. INVOLVEMENT WITH OTHER STUDENTS

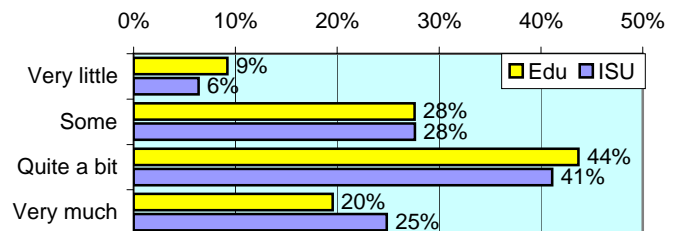
How often have you done each of the following?

Items		Never	Some-times	Often	Very often
Worked with other students on projects during class *	Edu	2	34	40	23
	ISU	11	39	34	16
Worked with classmates outside of class to prepare assignments *	Edu	2	34	43	21
	ISU	9	37	37	17
Tutored or taught other students (paid or voluntary) *	Edu	35	33	16	16
	ISU	43	34	15	8
Discussed ideas from your classes with others outside of class	Edu	8	46	29	17
	ISU	6	36	39	18
Had serious conversations with students of a different race *	Edu	20	54	15	11
	ISU	14	41	25	20
Had serious conversations with students who have different personal values from yours *	Edu	17	52	18	13
	ISU	11	37	29	23

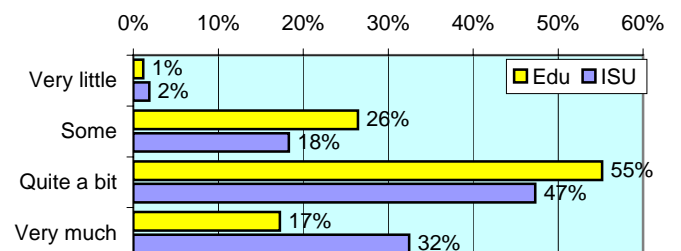
## VI. ACADEMIC WORK

How much has your coursework emphasized the following mental activities?

**Memorizing** facts, ideas or methods from your courses and readings

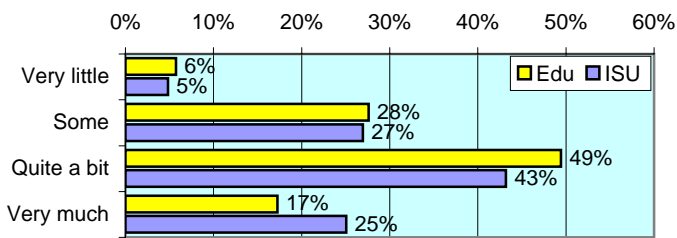


**Analyzing** the basic elements of an idea, experience or theory \*

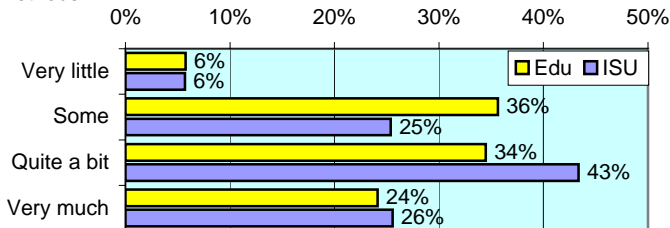


## VI. ACADEMIC WORK (continued)

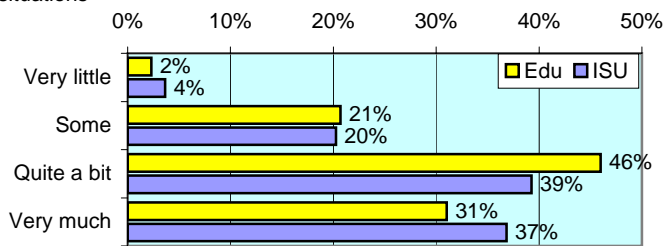
**Synthesizing** and organizing ideas, information, or experiences



**Making judgments** about the value of information, arguments, or methods



**Applying** theories or concepts to practical problems or in new situations



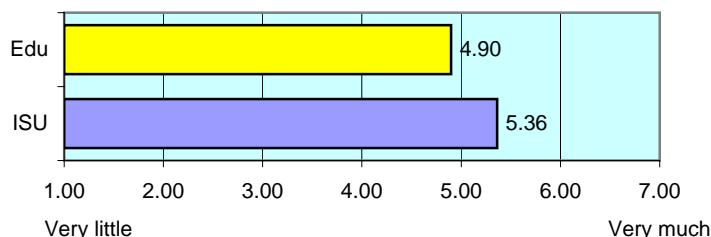
**In a typical week, how many homework problem sets do you complete?**

Items		None	1-2	3-4	More than 5
Number of problem sets that take you more than an hour to complete	Edu	17	29	37	17
	ISU	15	35	30	20
Number of problem sets that take you less than an hour to complete *	Edu	16	18	36	30
	ISU	16	39	22	22

**During the current school year, about how often have you done each of the following?**

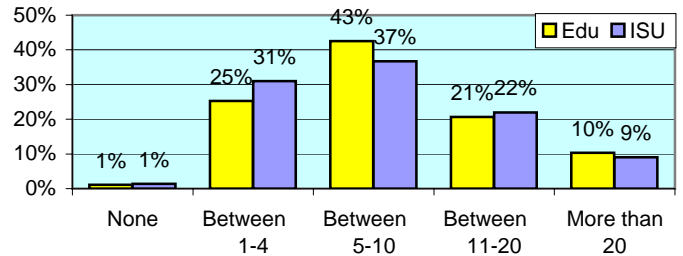
Items		Never	Some- times	Often	Very often
Examined the strengths and weaknesses of your own views on a topic	Edu	11	46	26	16
	ISU	9	39	36	17
Tried to better understand someone else's views by imagining how an issue looks from his or her perspective	Edu	3	44	37	16
	ISU	4	38	39	19
Learned something that changed the way you understand an issue or concept	Edu	3	45	43	9
	ISU	5	39	36	21

**Mark the box that best represents the extent to which your examinations during the current school year have challenged you to do your best work \*** numbers indicate means of 7-point scale

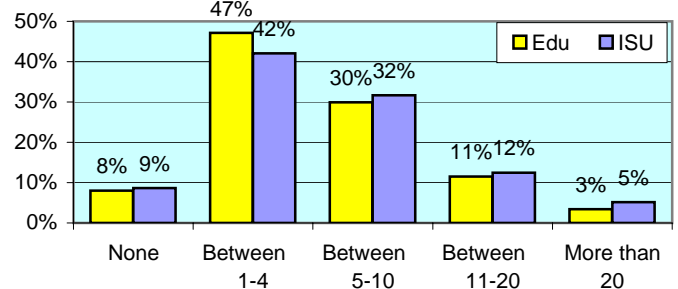


**During the current school year, about how much reading and writing have you done?**

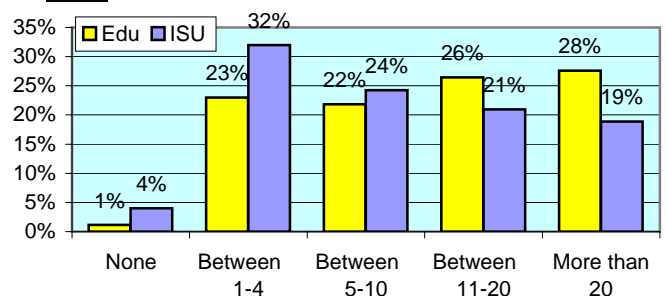
**Number of assigned textbooks, books, or book-length packs of course readings**



**Number of written papers or reports between 5 and 19 pages**



**Number of written papers or reports of fewer than 5 pages \***



## VII. PLANS DURING COLLEGE

**Which of the following have you done or do you plan to do before you graduate from your institution?**

Item		Not decided	Won't do	Plan to do	Done
Practicum, internship, field experience, co-op experience, or clinical assignment *	Edu	1	1	23	75
	ISU	6	13	22	59
Community service or volunteer work	Edu	9	10	9	71
	ISU	10	18	12	60
Participate in a learning community	Edu	15	36	11	38
	ISU	13	45	8	35
Worked on a research project with a faculty member outside of course *	Edu	20	68	3	9
	ISU	19	53	9	20
Foreign language coursework *	Edu	5	66	3	26
	ISU	5	43	9	43
Study abroad	Edu	8	89	3	0
	ISU	12	78	5	5
Independent study or self-designed major *	Edu	9	82	2	7
	ISU	11	55	9	26
Culminating senior experience (thesis, project, etc.)	Edu	8	22	26	44
	ISU	12	24	30	34



Office of Strategic Planning, Institutional Research & Effectiveness

419 Rankin Hall, Tel: 237-2305, Fax: 237-4530

<http://irt2.indstate.edu/home/index.htm>