

Indiana State University

2005 NSSE Senior Profile: College of Arts & Sciences

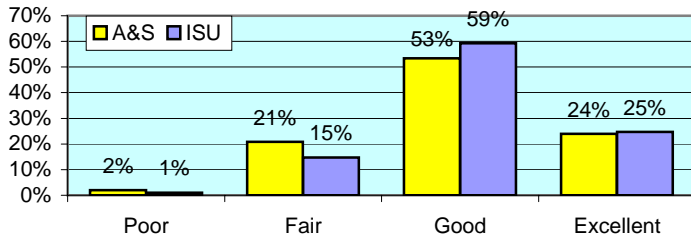
The National Survey of Student Engagement (NSSE) was administered to randomly selected ISU students in Spring 2005. The NSSE survey is designed to examine various aspects of a student's collegiate experience. Of the 671 ISU Senior students who completed the survey via the internet, 279 were from College of Arts & Sciences. This report presents comparisons between Arts & Sciences students and the rest of respondents. Separate reports including overall NSSE results are available upon request to the ISU campus community.

All numbers in this report are percentages unless otherwise stated.

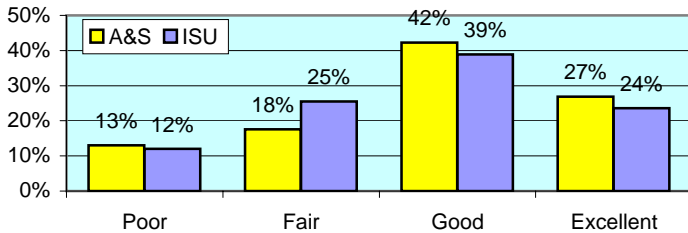
* item was found statistically significant in mean comparison

I. ABOUT INSTITUTION

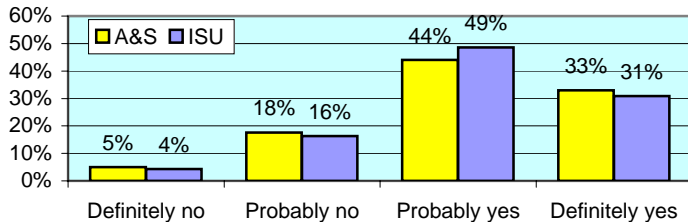
How would you evaluate your entire educational experience at this institution?



Overall, how would you evaluate the quality of academic advising you have received at your institution? *



If you could start over again, would you go to the same institution you are now attending?

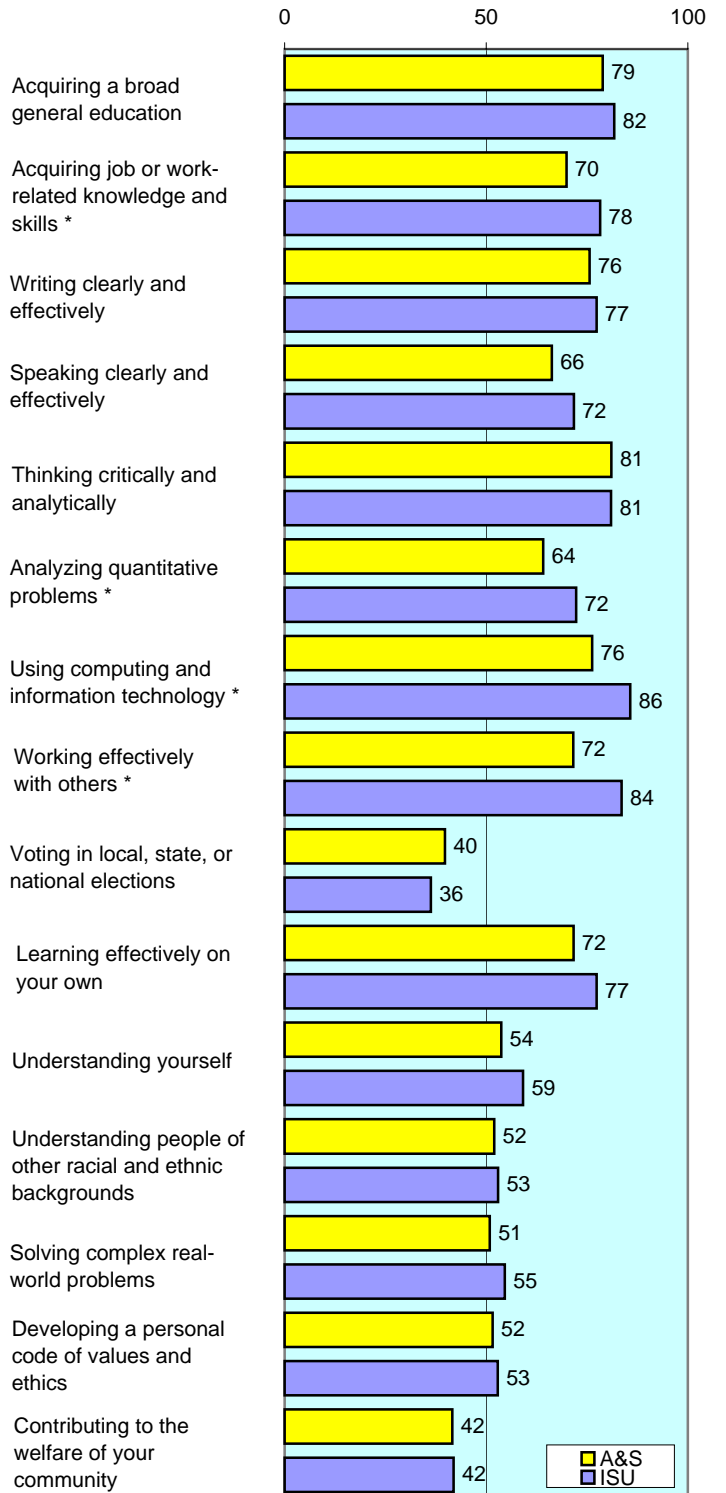


To what extent does your institution emphasize each of the following?

Items		Very little	Some	Quite a bit	Very much
Spending significant amounts of time studying and on academic work	A&S	4	27	43	26
	ISU	2	23	47	28
Providing the support you need to help you succeed academically	A&S	5	35	41	19
	ISU	4	34	47	15
Encouraging contact among students from different racial/ethnic backgrounds	A&S	23	39	25	12
	ISU	18	41	30	11
Helping you cope with your non-academic responsibilities	A&S	44	38	11	7
	ISU	44	35	15	6
Providing the support you need to thrive socially	A&S	29	42	23	6
	ISU	28	46	20	6
Attending campus events and activities (speakers, performances, etc.) *	A&S	15	36	35	14
	ISU	18	45	29	8
Using computers in academic work	A&S	1	13	31	55
	ISU	1	9	35	56

To what extent has your experience at this institution contributed to your knowledge, skills, and personal development in the following?

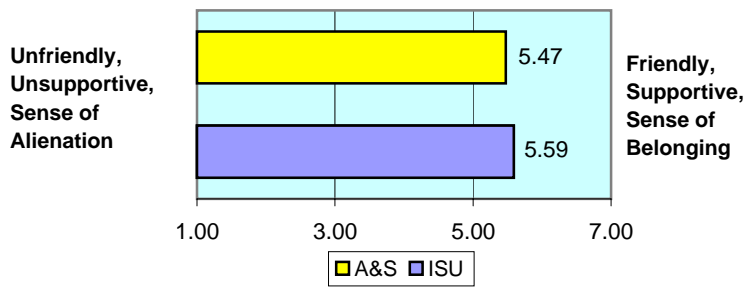
number is combined % who responded either 'very much' or 'quite a bit'



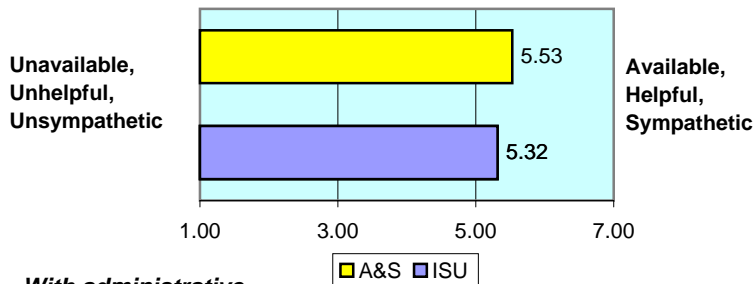
II. ABOUT RELATIONSHIPS

How would you rate your relationships with people at your institution?

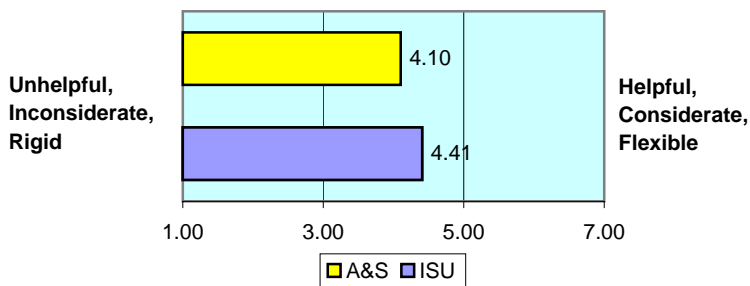
With other students... numbers indicate means of 7-point scale



With faculty members... *



With administrative personnel & offices... *



III. IN CLASSROOM

How often have you done each of the following?

Items		Never	Some- times	Often	Very often
Asked questions in class or contributed to class discussions	A&S	2	21	38	39
	ISU	3	20	39	38
Made a class presentation *	A&S	7	44	30	19
	ISU	6	24	43	27
Prepared two or more drafts of a paper or assignment before turning it in *	A&S	19	42	24	15
	ISU	15	35	32	18
Worked on a paper that required integrating ideas from various sources	A&S	2	14	42	42
	ISU	1	13	45	41
Included diverse perspectives in class discussions or assignments	A&S	4	40	32	24
	ISU	6	39	36	20
Came to class without completing readings or assignments	A&S	26	53	13	8
	ISU	24	57	12	7
Put together ideas from different courses for assignments or class discussions	A&S	4	35	43	18
	ISU	3	31	47	19
Used an electronic medium to discuss or complete an assignment *	A&S	14	32	27	26
	ISU	8	23	25	44
Worked harder than you thought you could to meet an instructor's expectations	A&S	8	37	37	19
	ISU	4	36	41	19

IV. INVOLVEMENT WITH FACULTY

How often have you done each of the following?

Items		Never	Some- times	Often	Very often
Used e-mail to communicate with an instructor *	A&S	1	19	37	42
	ISU	0	11	29	60
Discussed grades or assignments with an instructor	A&S	3	32	42	22
	ISU	3	34	32	32
Talked about career plans with a faculty member or advisor	A&S	15	37	30	18
	ISU	14	44	22	20
Discussed ideas from your classes with faculty outside of class	A&S	24	47	17	12
	ISU	30	44	16	10
Received prompt feedback from faculty on your performance	A&S	3	33	45	19
	ISU	3	29	48	19
Worked with faculty members on activities other than coursework	A&S	41	32	18	9
	ISU	46	31	16	7

V. INVOLVEMENT WITH OTHER STUDENTS

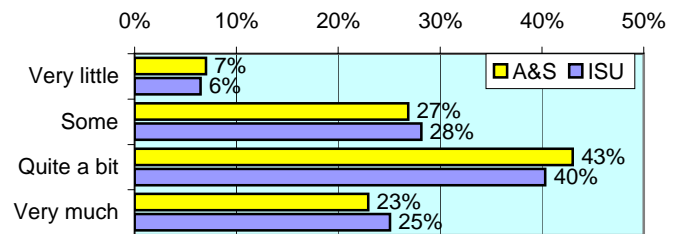
How often have you done each of the following?

Items		Never	Some- times	Often	Very often
Worked with other students on projects during class *	A&S	10	44	35	11
	ISU	10	35	35	20
Worked with classmates outside of class to prepare assignments *	A&S	9	47	31	13
	ISU	8	29	42	21
Tutored or taught other students (paid or voluntary)	A&S	45	32	16	8
	ISU	39	35	15	10
Discussed ideas from your classes with others outside of class	A&S	4	38	39	18
	ISU	7	37	37	19
Had serious conversations with students of a different race	A&S	14	38	28	20
	ISU	15	46	21	18
Had serious conversations with students who have different personal values from yours *	A&S	8	34	33	26
	ISU	15	42	25	18

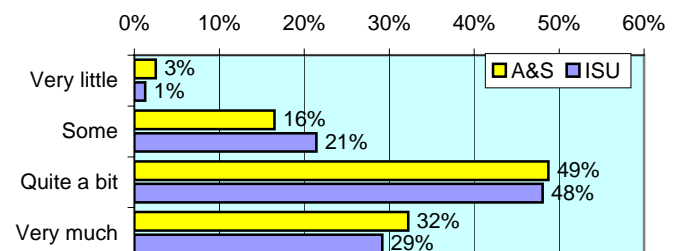
VI. ACADEMIC WORK

How much has your coursework emphasized the following mental activities?

Memorizing facts, ideas or methods from your courses and readings

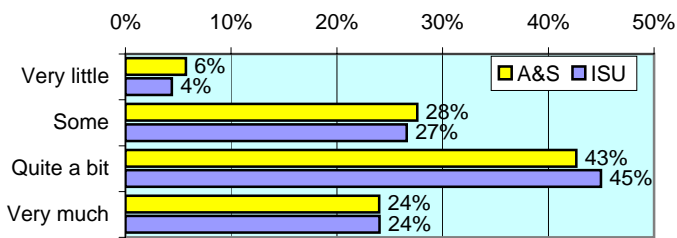


Analyzing the basic elements of an idea, experience or theory

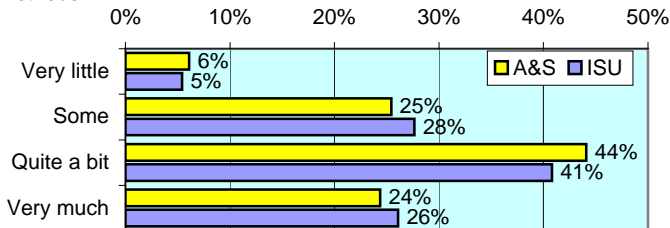


VI. ACADEMIC WORK (continued)

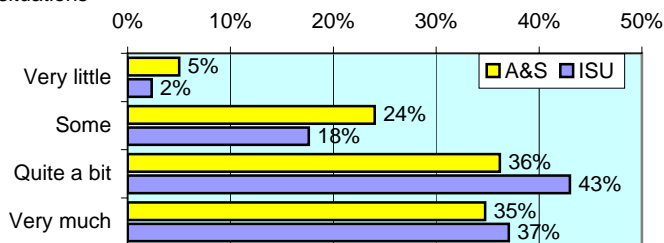
Synthesizing and organizing ideas, information, or experiences



Making judgments about the value of information, arguments, or methods



Applying theories or concepts to practical problems or in new situations *



In a typical week, how many homework problem sets do you complete?

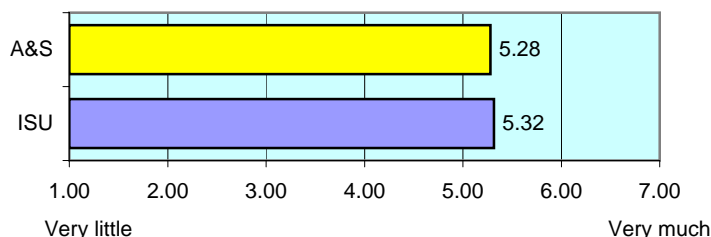
Items		None	1-2	3-4	More than 5
Number of problem sets that take you more than an hour to complete	A&S	18	37	27	18
	ISU	14	33	33	21
Number of problem sets that take you less than an hour to complete *	A&S	18	39	25	18
	ISU	15	35	23	27

During the current school year, about how often have you done each of the following?

Items		Never	Some- times	Often	Very often
Examined the strengths and weaknesses of your own views on a topic *	A&S	8	36	38	18
	ISU	10	43	32	15
Tried to better understand someone else's views by imagining how an issue looks from his or her perspective *	A&S	3	33	41	23
	ISU	4	43	37	15
Learned something that changed the way you understand an issue or concept	A&S	4	40	33	23
	ISU	5	39	39	17

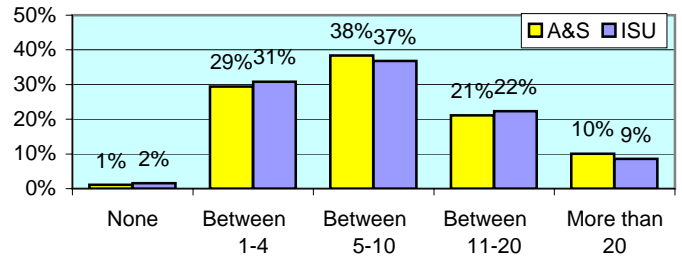
Mark the box that best represents the extent to which your examinations during the current school year have challenged you to do your best work

numbers indicate means of 7-point scale

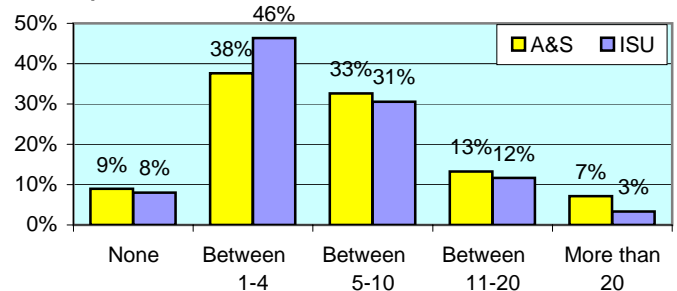


During the current school year, about how much reading and writing have you done?

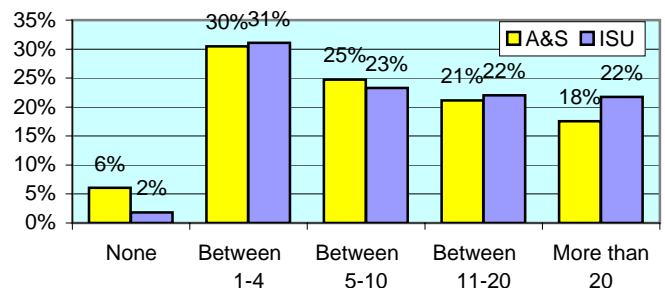
Number of assigned textbooks, books, or book-length packs of course readings



Number of written papers or reports between 5 and 19 pages *



Number of written papers or reports of fewer than 5 pages



VII. PLANS DURING COLLEGE

Which of the following have you done or do you plan to do before you graduate from your institution?

Item		Not decided	Won't do	Plan to do	Done
Practicum, internship, field experience, co-op experience, or clinical assignment	A&S	6	11	20	62
	ISU	5	11	24	60
Community service or volunteer work	A&S	10	20	12	58
	ISU	9	14	12	64
Participate in a learning community	A&S	13	46	7	34
	ISU	13	42	9	36
Worked on a research project with a faculty member outside of course	A&S	20	49	8	23
	ISU	18	59	8	15
Foreign language coursework *	A&S	4	42	10	44
	ISU	6	49	7	38
Study abroad	A&S	13	75	5	7
	ISU	10	83	4	3
Independent study or self-designed major *	A&S	10	54	10	26
	ISU	11	62	6	21
Culminating senior experience (thesis, project, etc.) *	A&S	13	31	27	29
	ISU	11	18	31	40



Office of Strategic Planning, Institutional Research & Effectiveness

419 Rankin Hall, Tel: 237-2305, Fax: 237-4530

<http://irt2.indstate.edu/home/index.htm>