

Indiana State University 2000 Senior Survey Report

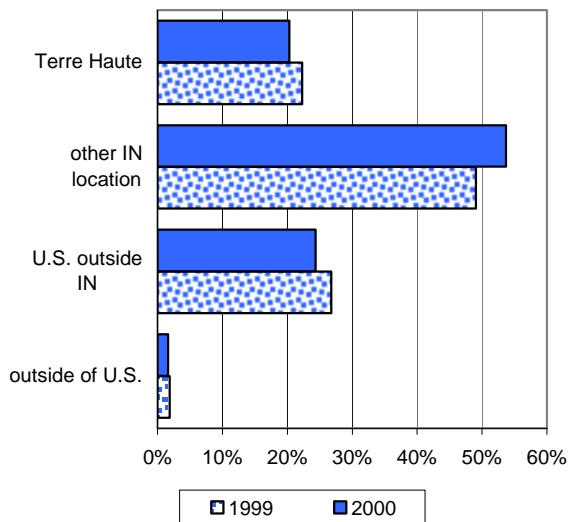
The 2000 Senior Survey instrument was the same one administered to 1999 spring graduates. As in 1999, surveys were sent to all seniors who had applied for graduation before the end of the Spring semester and students were asked to verify the address to which their diplomas would be sent. As in 1999, surveys were also sent to those seniors who had applied to graduate during the summer of 2000. Of the 1235 surveys sent, a total of 684 were returned, making the 2000 response rate 55.4%. This is up almost 9% from the 1999 response rate of 46.6%.

I. Plans for Next Year

Which best describes your plans for next year?

	% indicating response	1999
Remain in current job related to major	16%	14%
Remain in job not related to major, but look for work in major	13%	8%
Look for job (not currently employed)	44%	50%
Attend school	15%	14%
None of the above	11%	13%

Where do you expect to be living?



II. General Satisfaction

Overall, how satisfied are you with regard to:

	% Satisfied	% Neutral	% Dissatisfied	% Satisfied 1999
Your personal growth	93%	6%	1%	92%
Your intellectual growth	92%	7%	1%	89%
Your entire experience	90%	8%	2%	87%
Value of your education	89%	9%	2%	89%
Classroom instruction	89%	10%	1%	91%
Personal safety	86%	11%	3%	81%
Appearance of grounds	85%	11%	4%	76%
HMSU	84%	14%	2%	83%
Appearance of buildings	81%	14%	6%	76%
Library	78%	14%	7%	77%
Preparation future educ.	78%	18%	4%	78%
Career preparation	78%	15%	7%	75%
Safety and Security	75%	18%	7%	69%
Computer labs	73%	16%	11%	71%
Registration	70%	21%	9%	67%
Laboratory facilities	65%	29%	6%	63%
Recreational Sports	62%	36%	3%	60%
Student activities	59%	36%	5%	56%
Senior Checkout	57%	32%	11%	53%
Career Center	53%	34%	14%	59%
Student Health Center	52%	31%	17%	56%
Acad. Services Center	51%	43%	6%	52%
Gen. Ed. requirements	49%	30%	21%	48%
Student Life Office	48%	47%	5%	46%
Counseling Center	40%	56%	4%	41%
Fee payments	33%	44%	23%	30%
Financial Aid	20%	26%	54%	17%
Parking	13%	12%	75%	17%

% shown excludes those who responded "Not Applicable/Never Used"
Scale: 1 = Very Satisfied, 5 = Very Dissatisfied

III. Your Academic Program

I am satisfied with ...

	% Agree	% Neutral	% Disagree	% Agree 1999
Professional expertise of faculty in my major	86%	10%	4%	84%
Teaching ability of faculty in my major	84%	10%	6%	82%
Fairness of grading in my major	82%	12%	6%	79%
Opportunities to evaluate classroom instruction in my major	80%	13%	7%	80%
Opportunities to interact with departmental faculty	79%	15%	6%	78%
Academic ability of other students in my major	76%	18%	7%	72%
Feedback from instructors about my academic progress	73%	19%	8%	72%
Preparation for employment I received from courses in my major	73%	18%	9%	70%
Preparation for grad./prof. study I received from courses in my major	72%	22%	6%	66%
Scheduling of course offerings in my major	66%	14%	20%	67%
Academic advising related to my major	62%	18%	20%	65%
Information provided about internships, practicums, or coops	53%	25%	22%	54%
Academic advising related to General Education	49%	26%	25%	46%
Career counseling provided by my department	45%	32%	22%	47%

Scale: 1 - Strongly Agree, 5 - Strongly Disagree

IV. Skills and Knowledge

HIGHLIGHTS

My experiences at ISU have prepared me well in ...

	% Agree	% Neutral	% Disagree	% Agree 1999
Thinking critically	89%	10%	1%	89%
Listening	89%	10%	1%	87%
Problem solving	87%	11%	2%	84%
Speaking	86%	11%	3%	83%
Writing	86%	11%	4%	83%
Thinking creatively	85%	12%	3%	85%
Using library resources	75%	18%	7%	77%
Physical health/well being	67%	26%	7%	67%
Appreciating the arts	58%	29%	13%	55%
Using mathematics	57%	30%	13%	58%

Scale: 1 - Strongly Agree, 5 - Strongly Disagree

Fewer 2000 than 1999 graduates were unemployed at the time of the survey (44% vs. 50% in 1999), but more were in jobs not related to their major.

5% more 2000 than 1999 graduates plan to stay in Indiana, but 2% fewer plan to stay in Terre Haute.

In most areas, 2000 seniors appeared to be slightly more satisfied with ISU than 1999 seniors. Up most:

- * Appearance of grounds +9%
- * Safety & security +6%
- * Preparation for graduate/professional study +6%

In most areas, 2000 seniors felt slightly more prepared by ISU than 1999 seniors.

4% more 2000 seniors than 1999 seniors indicated working 31+ hours per week, while 3% fewer indicated not working at all.

V. Life at ISU

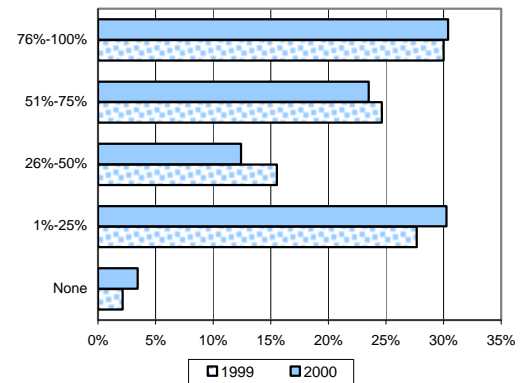
Which best describes your working situation during your last semester?



How many times per month did you typically attend ...

	% None	% 1-5	% 6 or more	% None 1999
ISU sports events	49%	45%	6%	48%
Artistic events	67%	30%	3%	66%
Greek functions	64%	14%	22%	65%
Social organ. events	54%	37%	10%	51%

During your last year, what percentage of your friends were ISU students?



How many hours per week did you typically spend ...

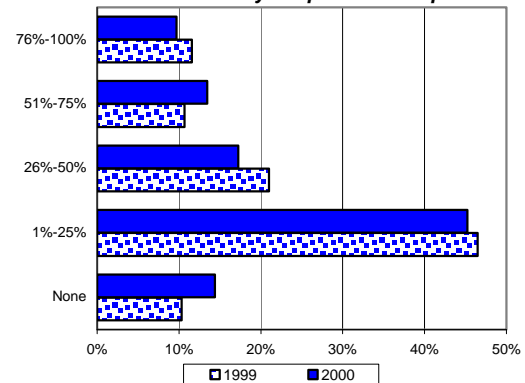
		None	1-10	11-20	21-30	31+
Studying out of class	2000	1%	53%	31%	10%	5%
	1999	0%	51%	34%	11%	4%
Socializing on campus	2000	18%	58%	16%	5%	2%
	1999	16%	63%	13%	6%	3%
Employed on campus	2000	62%	12%	22%	3%	1%
	1999	61%	12%	22%	4%	1%
Employed off campus	2000	39%	10%	18%	17%	16%
	1999	42%	10%	20%	16%	12%

How satisfied are you with these aspects of the Residence Halls?

	% Satisfied	% Neutral	% Dissatisfied	% Satisfied 1999
Social climate	69%	20%	12%	68%
Academic climate	57%	28%	14%	56%
Quality of food	54%	29%	17%	53%
Physical facilities	60%	27%	14%	63%
Privacy	48%	24%	27%	46%

Figures do not include students who never lived in ISU residence halls

In your last year, what portion of your time out of class did you spend on campus?



Office of Institutional Research & Testing
 419 Rankin Hall, Tel: 237-2305, Fax: 237-4292
<http://web.indstate.edu/oirt/>