

# Indiana State University

## 1999 Senior Survey Report

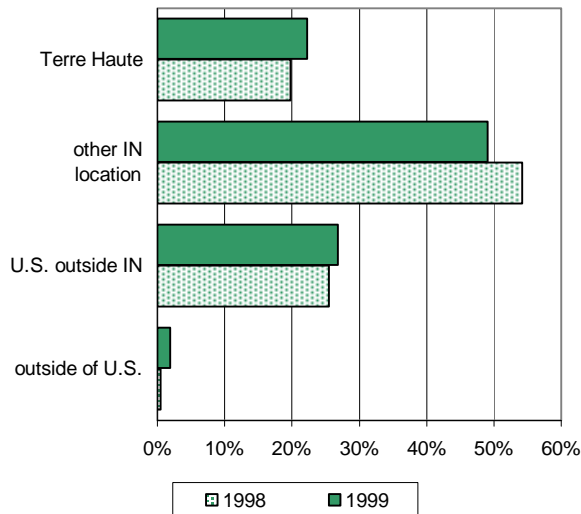
The 1999 Senior Survey instrument was the same one administered to 1998 spring graduates. As in 1998, surveys were sent to all seniors who had applied for graduation before the end of the Spring semester and students were asked to verify the address to which their diplomas would be sent. Unlike 1998, surveys were also sent to those seniors who had applied to graduate during the summer. Of the 1228 surveys sent, a total of 572 were returned, making the 1999 response rate 47%. This is up slightly from the 1998 response rate of 45%.

### I. Plans for Next Year

**Which best describes your plans for next year?**

	% indicating response	1998
Remain in current job related to major	14%	15%
Remain in job not related to major, but look for work in major	8%	17%
Look for job (not currently employed)	50%	41%
Attend school	14%	16%
None of the above	13%	10%

**Where do you expect to be living?**



### II. General Satisfaction

**Overall, how satisfied are you with regard to:**

	% Satisfied	% Neutral	% Dissatisfied	% Satisfied 1998
Your personal growth	92%	7%	1%	92%
Classroom instruction	91%	6%	3%	89%
Your intellectual growth	89%	8%	2%	91%
Value of your education	89%	8%	3%	90%
Your entire experience	87%	10%	3%	90%
HMSU	83%	14%	3%	85%
Personal safety	81%	14%	5%	84%
Preparation future educ.	78%	17%	4%	80%
Library	77%	15%	8%	79%
Appearance of buildings	76%	16%	8%	80%
Appearance of grounds	76%	12%	13%	83%
Career preparation	75%	17%	8%	78%
Computer labs	71%	19%	10%	65%
Safety and Security	69%	22%	9%	69%
Registration	67%	22%	12%	68%
Laboratory facilities	63%	30%	6%	58%
Recreational Sports	60%	36%	4%	59%
Career Center	59%	30%	11%	54%
Student activities	56%	36%	8%	58%
Student Health Center	56%	31%	12%	51%
Senior Checkout	53%	37%	10%	59%
Acad. Services Center	52%	44%	4%	46%
Gen. Ed. requirements	48%	29%	23%	48%
Student Life Office	46%	50%	4%	41%
Counseling Center	41%	55%	4%	33%
Fee payments	30%	42%	28%	35%
Parking	17%	10%	73%	23%
Financial Aid	17%	25%	59%	26%

*% shown excludes those who responded "Not Applicable/Never Used"  
Scale: 1 = Very Satisfied, 5 = Very Dissatisfied*

### III. Your Academic Program

**I am satisfied with ...**

	% Agree	% Neutral	% Disagree	% Agree 1998
Professional expertise of faculty in my major	84%	11%	5%	87%
Teaching ability of faculty in my major	82%	10%	8%	84%
Opportunities to evaluate classroom instruction in my major	80%	13%	6%	78%
Fairness of grading in my major	79%	14%	7%	84%
Opportunities to interact with departmental faculty	78%	16%	6%	80%
Academic ability of other students in my major	72%	22%	5%	76%
Feedback from instructors about my academic progress	72%	19%	9%	71%
Preparation for employment I received from courses in my major	70%	22%	9%	72%
Scheduling of course offerings in my major	67%	14%	19%	69%
Preparation for grad./prof. study I received from courses in my major	66%	28%	6%	69%
Academic advising related to my major	65%	14%	21%	63%
Information provided about internships, practicums, or coops	54%	25%	21%	57%
Career counseling provided by my department	47%	32%	20%	47%
Academic advising related to General Education	46%	28%	26%	44%

*Scale: 1 = Strongly Agree, 5 = Strongly Disagree*

### IV. Skills and Knowledge

Office of Institutional Research Testing

### HIGHLIGHTS

June 1999

<b>My experiences at ISU have prepared me well in ...</b>				% Agree
	% Agree	% Neutral	% Disagree	1998
Thinking critically	89%	10%	1%	90%
Listening	87%	12%	2%	87%
Thinking creatively	85%	12%	3%	85%
Problem solving	84%	13%	2%	86%
Writing	83%	13%	4%	85%
Speaking	83%	14%	3%	87%
Using library resources	77%	15%	8%	77%
Physical health/well being	67%	24%	9%	67%
Using mathematics	58%	29%	12%	60%
Appreciating the arts	55%	32%	14%	54%

Scale: 1 = Strongly Agree, 5 = Strongly Disagree

More 1999 seniors than 1998 seniors were unemployed when surveyed.

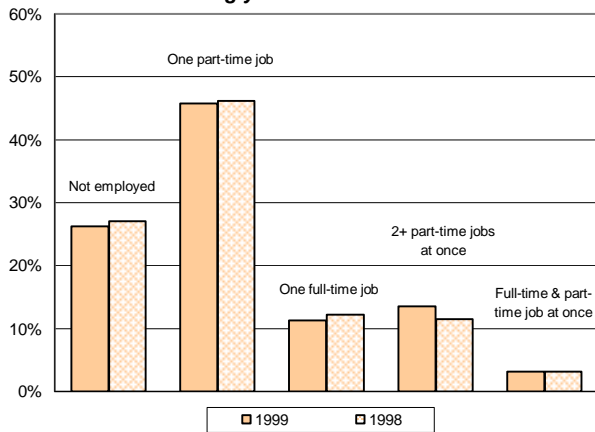
More 1999 than 1998 seniors are satisfied with computer labs and the Counseling, Student Health and Academic Services Centers, but fewer were satisfied with the appearance of campus, Financial Aid, Parking and Senior Checkout.

In most areas, 1999 seniors are less satisfied with their academic programs than were 1998 seniors. Exceptions include academic advising, opportunities to evaluate classroom instruction, and feedback from instructors.

In most areas, 1999 seniors felt slightly less prepared by ISU than did 1998 seniors.

**V. Life at ISU**

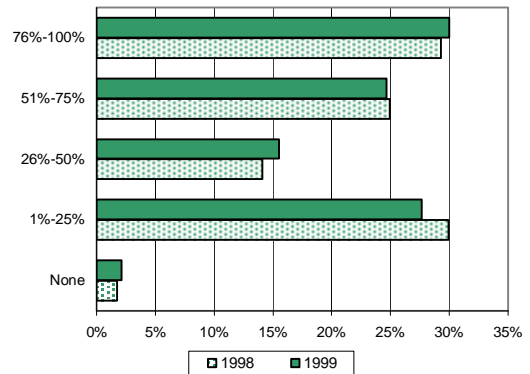
**Which best describes your working situation during your last semester?**



**How many times per month did you typically attend ...**

	% None	% 1-5	% 6 or more	% None 1998
ISU sports events	48%	46%	6%	45%
Artistic events	66%	33%	1%	66%
Greek functions	65%	17%	18%	68%
Social organ. events	51%	40%	9%	52%

**During your last year, what percentage of your friends were ISU students?**



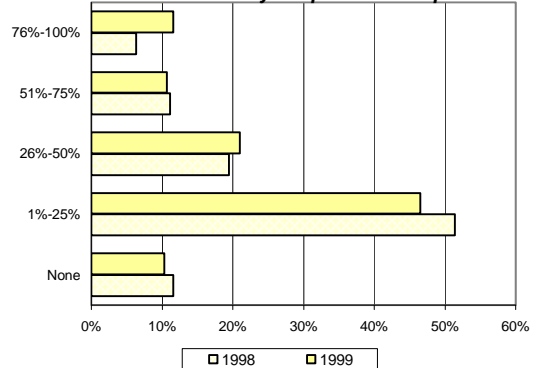
<b>How many hours per week did you typically spend ...</b>						
		None	1-10	11-20	21-30	31+
Studying out of class	1999	0%	51%	34%	11%	4%
	1998	0%	50%	35%	10%	4%
Socializing on campus	1999	16%	63%	13%	6%	3%
	1998	19%	62%	12%	5%	3%
Employed on campus	1999	61%	12%	22%	4%	1%
	1998	64%	9%	24%	2%	1%
Employed off campus	1999	42%	10%	20%	16%	12%
	1998	39%	11%	18%	18%	14%

**How satisfied are you with these aspects of the Residence Halls?**

	% Satisfied	% Neutral	% Dissatisfied	% Satisfied 1998
Social climate	68%	22%	10%	67%
Academic climate	56%	30%	14%	53%
Quality of food	53%	33%	14%	56%
Physical facilities	63%	26%	11%	65%
Privacy	46%	28%	26%	42%

Figures do not include students who never lived in ISU residence halls

**In your last year, what portion of your time out of class did you spend on campus?**



Office of Institutional Research & Testing  
 419 Rankin Hall, Tel: 237-2305, Fax: 237-4292  
<http://web.indstate.edu/oirt/>