

Indiana State University 1998 Senior Survey Report

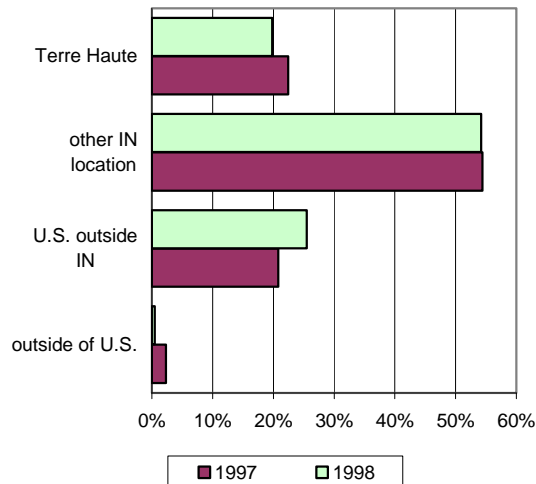
The 1998 Senior Survey instrument was the same one administered to 1997 spring graduates. As in 1997, surveys were sent to all seniors who had applied for graduation before the end of the Spring semester and students were asked to verify the address to which their diplomas would be sent. A total of 465 surveys were returned of the 1030 sent, making the 1998 response rate 45%. This is down from the 1997 response rate of 54%.

I. Plans for Next Year

Which best describes your plans for next year?

	% indicating response	1997
Remain in current job related to major	15%	30%
Remain in job not related to major, but look for work in major	17%	17%
Look for job (not currently employed)	41%	34%
Attend school	16%	12%
None of the above	10%	7%

Where do you expect to be living?



II. General Satisfaction

Overall, how satisfied are you with regard to:

	% Satisfied	% Neutral	% Dissatisfied	% Satisfied 1997
Your personal growth	92%	7%	1%	93%
Your intellectual growth	91%	8%	1%	93%
Your entire experience	90%	8%	2%	89%
Value of your education	90%	8%	2%	90%
Classroom instruction	89%	9%	2%	90%
HMSU	85%	13%	2%	87%
Personal safety	84%	13%	4%	81%
Appearance of grounds	83%	13%	4%	87%
Preparation future educ.	80%	16%	3%	77%
Appearance of buildings	80%	16%	4%	83%
Library	78%	12%	10%	78%
Career preparation	78%	15%	7%	75%
Registration	68%	23%	9%	74%
Safety and Security	67%	25%	7%	68%
Computer labs	64%	21%	15%	71%
Laboratory facilities	58%	34%	8%	57%
Student activities	58%	34%	8%	56%
Senior Checkout	57%	33%	10%	63%
Recreational Sports	50%	46%	4%	53%
Career Center	50%	39%	11%	55%
Gen Ed requirements	48%	28%	24%	48%
Student Health Center	44%	42%	14%	47%
Acad. Services Center	41%	54%	6%	45%
Fee payments	33%	41%	25%	35%
Student Life Office	29%	70%	2%	31%
Parking	22%	19%	59%	27%
Counseling Center	21%	76%	3%	24%
Financial Aid	21%	44%	36%	23%

% neutral includes those who had never used the service

Scale: 1 = very satisfied, 5 = very dissatisfied

III. Your Academic Program

I am satisfied with ...

	% Agree	% Neutral	% Disagree	% Agree 1997
Professional expertise of faculty in my major	87%	8%	5%	83%
Teaching ability of faculty in my major	84%	8%	8%	84%
Fairness of grading in my major	84%	9%	7%	78%
Opportunities to interact with departmental faculty	80%	15%	5%	79%
Opportunities to evaluate classroom instruction in my major	78%	14%	8%	78%
Academic ability of other students in my major	76%	18%	6%	75%
That the courses in my major prepared me for employment	72%	18%	10%	70%
Feedback from instructors about my academic progress	71%	21%	9%	73%
That the courses in my major prepared me for grad./prof. study	69%	25%	5%	65%
Scheduling of courses in my major	69%	15%	16%	67%
Academic advising related to my major	63%	17%	21%	59%
Information provided about internships, practicums, or coops	57%	27%	17%	54%
Career counseling provided by my department	47%	31%	21%	41%
Academic advising related to General Education	44%	33%	23%	43%

Scale: 1 = Strongly Agree, 5 = Strongly Disagree

IV. Skills and Knowledge

<i>My experiences at ISU have prepared me well in ...</i>				% Agree
	% Agree	% Neutral	% Disagree	1997
Thinking critically	90%	8%	2%	87%
Listening	87%	10%	2%	86%
Speaking	87%	9%	3%	83%
Problem solving	86%	10%	4%	84%
Thinking creatively	85%	11%	4%	82%
Writing	85%	8%	7%	83%
Using library resources	77%	15%	8%	75%
Physical health/well being	67%	27%	7%	64%
Using mathematics	60%	29%	11%	60%
Appreciating the arts	54%	31%	15%	56%

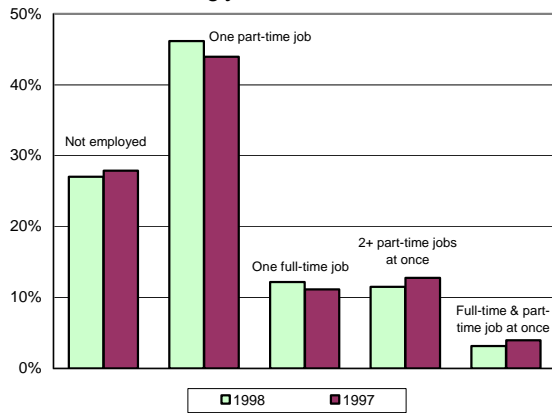
Scale: 1 = Strongly Agree, 5 = Strongly Disagree

HIGHLIGHTS

- * more 1998 seniors than 1997 seniors were unemployed when surveyed.
- * 1998 seniors are generally less satisfied with ISU than 1997 seniors.
- * Overall, 1998 seniors are more satisfied with their academic programs than 1997 seniors.
- * 1998 seniors feel more prepared than 1997 seniors.
- * 27% of 1998 seniors worked at least one full-time job, a figure almost identical to 1997.

V. Life at ISU

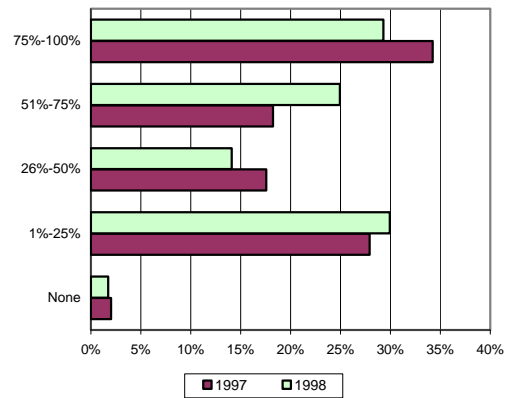
Which best describes your working situation during your last semester?



How many times per month did you typically attend ...

	% None	% 1-5	% 6 or more	% None 1997
ISU sports events	45%	50%	5%	55%
Artistic events	66%	31%	2%	66%
Greek functions	68%	13%	19%	67%
Social organ. events	52%	38%	9%	54%

During your last year, what percentage of your friends were ISU students?



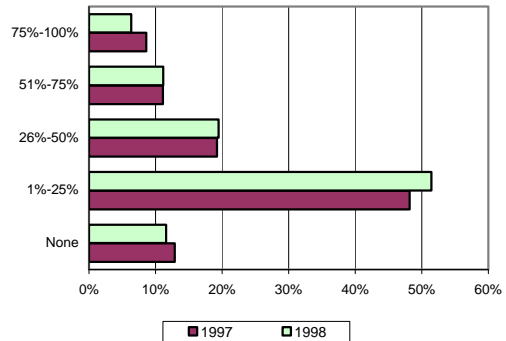
<i>How many hours per week did you typically spend ...</i>						
		None	1-10	11-20	21-30	31+
Studying out of class	1998	0%	50%	35%	10%	4%
	1997	0%	47%	38%	11%	4%
Socializing on campus	1998	19%	62%	12%	5%	3%
	1997	20%	57%	14%	6%	2%
Employed on campus	1998	64%	9%	24%	2%	1%
	1997	65%	11%	20%	3%	1%
Employed off campus	1998	39%	11%	18%	18%	14%
	1997	43%	6%	18%	19%	14%

How satisfied are you with these aspects of the Residence Halls?

	% Satisfied	% Neutral	% Dissatisfied	% Satisfied 1997
Social climate	67%	25%	8%	67%
Academic climate	53%	33%	15%	55%
Quality of food	56%	29%	15%	58%
Physical facilities	65%	26%	9%	64%
Privacy	42%	31%	27%	39%

% shown are % of students who lived in residence halls

In your last year, what portion of your time out of class did you spend on campus?



Office of Institutional Research & Testing
 419 Rankin Hall, Tel: 237-2305, Fax: 237-4292
<http://web.indstate.edu/oirt/>