

Indiana State University

2003 vs. 2005 First-Year Students Comparison: NSSE Edition

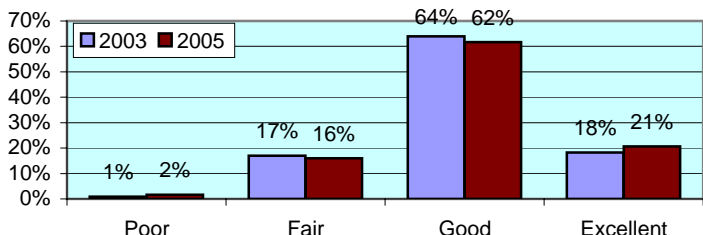
ISU participated in The National Survey of Student Engagement (NSSE) in 2003 and 2005. This report provides comparisons between the 2003 and 2005 NSSE results. The report includes freshman cohort students enrolled at ISU in 2002 (238 students) and 2004 (448 students). Separate reports including overall NSSE results for each cohort are available upon request to the ISU community.

All numbers in this report are percentages unless otherwise stated.

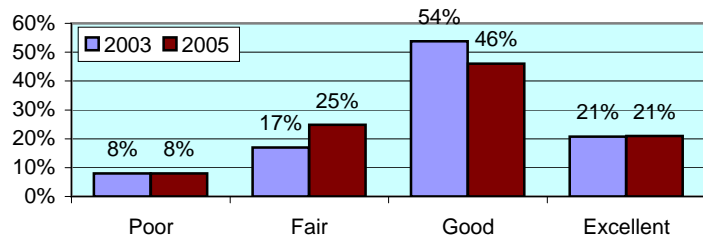
* item was found statistically significant in mean comparison

I. ABOUT INSTITUTION

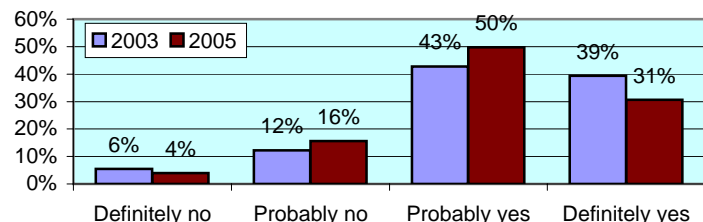
How would you evaluate your entire educational experience at this institution?



Overall, how would you evaluate the quality of academic advising you have received at your institution? *



If you could start over again, would you go to the same institution you are now attending? *

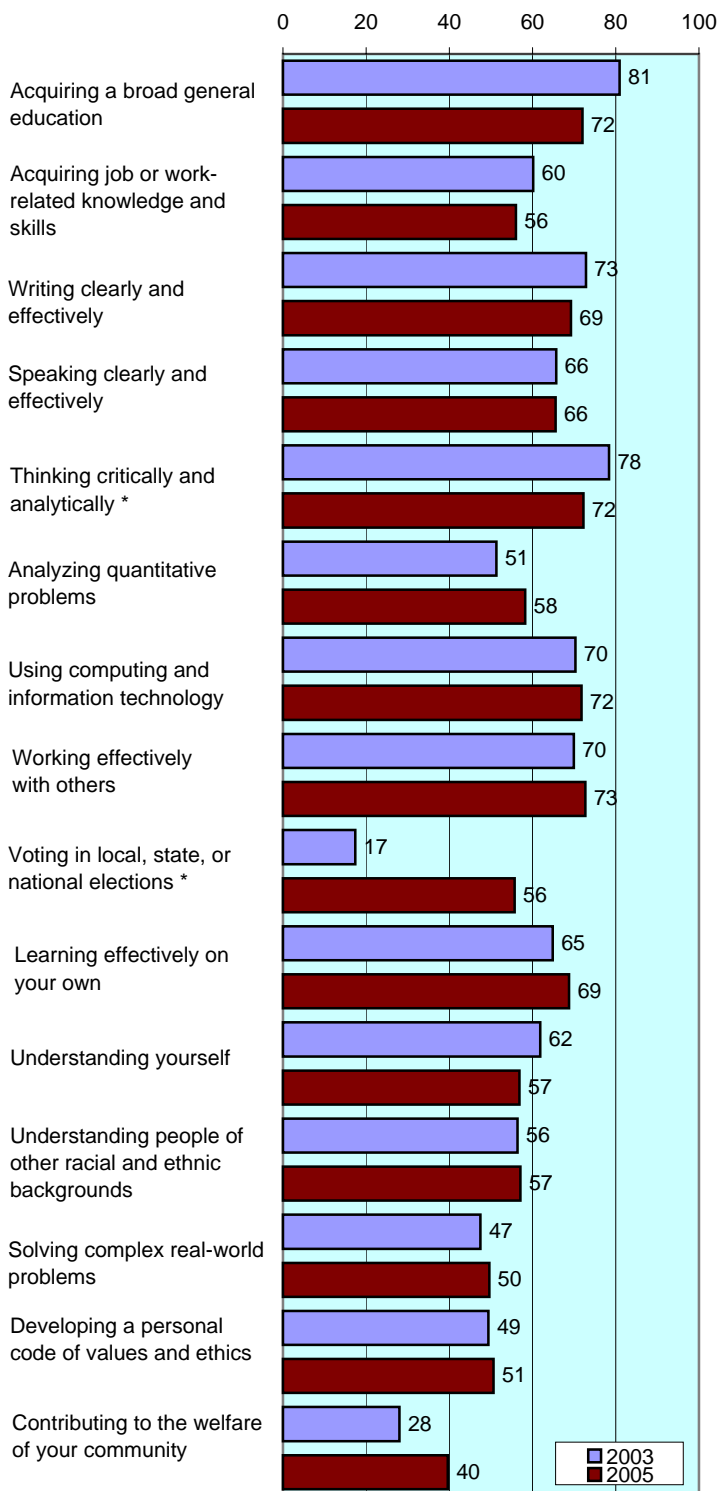


To what extent does your institution emphasize each of the following?

Items		Very little	Some	Quite a bit	Very much
Spending significant amounts of time studying and on academic work	2003	3	25	44	28
	2005	2	28	46	23
Providing the support you need to help you succeed academically	2003	3	28	42	28
	2005	5	34	45	16
Encouraging contact among students from different racial/ethnic backgrounds *	2003	12	34	33	20
	2005	14	37	32	17
Helping you cope with your non-academic responsibilities *	2003	26	38	25	11
	2005	31	39	21	8
Providing the support you need to thrive socially *	2003	15	42	31	11
	2005	17	45	27	10
Attending campus events and activities (speakers, performances, etc.) *	2003	8	32	44	16
	2005	10	35	37	18
Using computers in academic work *	2003	1	12	39	48
	2005	3	16	37	44

To what extent has your experience at this institution contributed to your knowledge, skills, and personal development in the following?

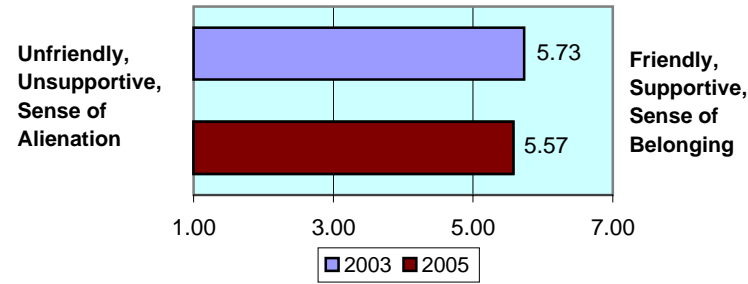
number is combined % who responded either 'very much' or 'quite a bit'



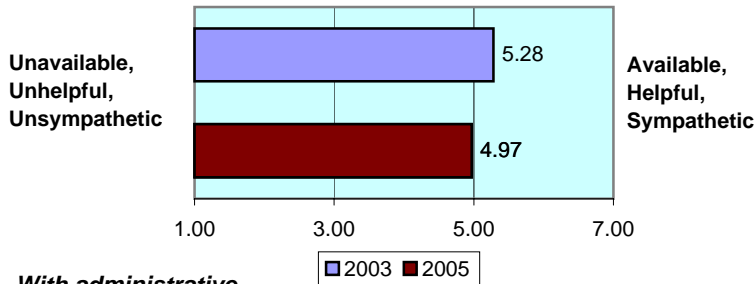
II. ABOUT RELATIONSHIPS

How would you rate your relationships with people at your institution?

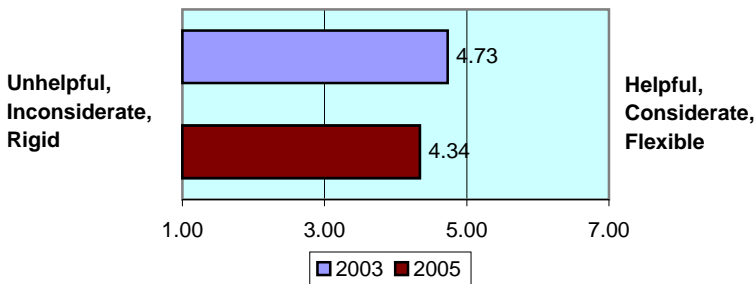
With other students... * numbers indicate means of 7-point scale



With faculty members... *



With administrative personnel & offices... *



III. IN CLASSROOM

How often have you done each of the following?

Items		Never	Some-times	Often	Very often
Asked questions in class or contributed to class discussions	2003	3	39	36	22
	2005	2	42	38	17
Made a class presentation	2003	6	55	29	10
	2005	6	57	33	5
Prepared two or more drafts of a paper or assignment before turning it in	2003	12	39	31	18
	2005	10	36	34	20
Worked on a paper that required integrating ideas from various sources	2003	3	16	58	23
	2005	2	22	51	25
Included diverse perspectives in class discussions or assignments	2003	4	43	37	17
	2005	7	43	34	16
Came to class without completing readings or assignments	2003	18	58	15	9
	2005	15	63	15	8
Put together ideas from different courses for assignments or class discussions	2003	7	47	38	8
	2005	5	49	39	8
Used an electronic medium to discuss or complete an assignment	2003	20	36	25	18
	2005	21	31	28	20
Worked harder than you thought you could to meet an instructor's expectations *	2003	10	45	36	8
	2005	6	44	40	10

IV. INVOLVEMENT WITH FACULTY

How often have you done each of the following?

Items		Never	Some-times	Often	Very often
Used e-mail to communicate with an instructor	2003	3	28	41	29
	2005	1	28	41	29
Discussed grades or assignments with an instructor	2003	8	40	37	15
	2005	8	48	28	16
Talked about career plans with a faculty member or advisor	2003	26	45	22	7
	2005	26	51	16	7
Discussed ideas from your classes with faculty outside of class	2003	43	42	12	4
	2005	48	35	14	3
Received prompt feedback from faculty on your performance	2003	7	47	38	8
	2005	5	45	41	8
Worked with faculty members on activities other than coursework	2003	59	25	14	2
	2005	52	31	13	3

V. INVOLVEMENT WITH OTHER STUDENTS

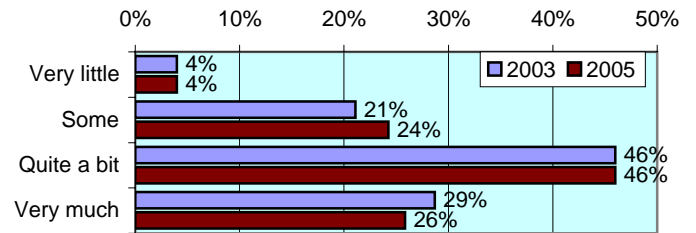
How often have you done each of the following?

Items		Never	Some-times	Often	Very often
Worked with other students on projects during class	2003	8	45	38	9
	2005	5	47	39	9
Worked with classmates outside of class to prepare assignments	2003	8	55	29	7
	2005	8	54	31	7
Tutored or taught other students (paid or voluntary)	2003	57	33	7	3
	2005	58	31	8	3
Discussed ideas from your classes with others outside of class	2003	8	43	32	17
	2005	7	44	33	15
Had serious conversations with students of a different race	2003	15	36	28	21
	2005	17	38	26	19
Had serious conversations with students who have different personal values from yours	2003	12	35	30	23
	2005	12	36	28	24

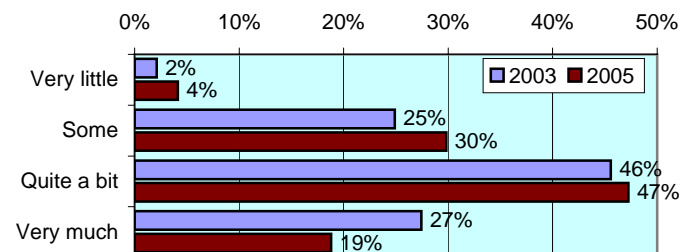
VI. ACADEMIC WORK

How much has your coursework emphasized the following mental activities?

Memorizing facts, ideas or methods from your courses and readings

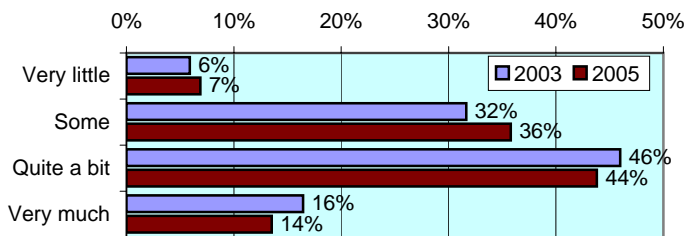


Analyzing the basic elements of an idea, experience or theory *

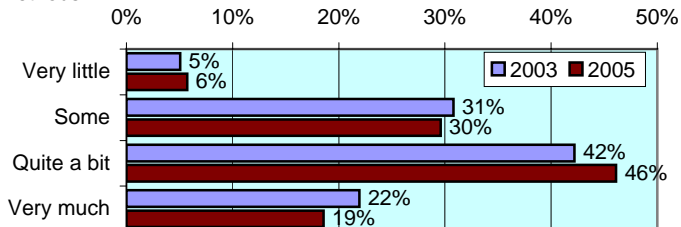


VI. ACADEMIC WORK (continued)

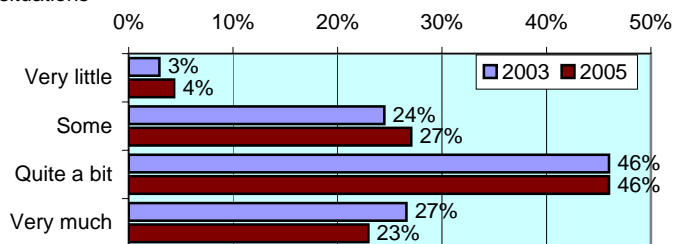
Synthesizing and organizing ideas, information, or experiences



Making judgments about the value of information, arguments, or methods



Applying theories or concepts to practical problems or in new situations

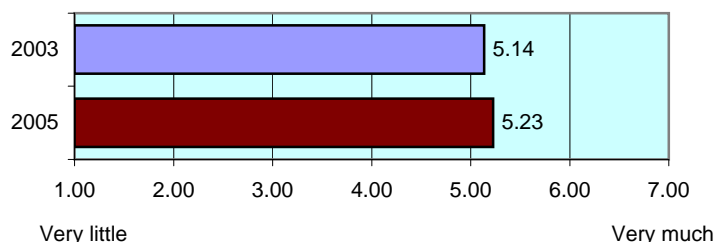


In a typical week, how many homework problem sets do you complete?

Items		None	1-2	3-4	More than 5
Number of problem sets that take you more than an hour to complete	2003	18	45	26	11
	2005	13	48	28	10
Number of problem sets that take you less than an hour to complete	2003	8	35	34	22
	2005	8	34	34	25

Mark the box that best represents the extent to which your examinations during the current school year have challenged you to do your best work

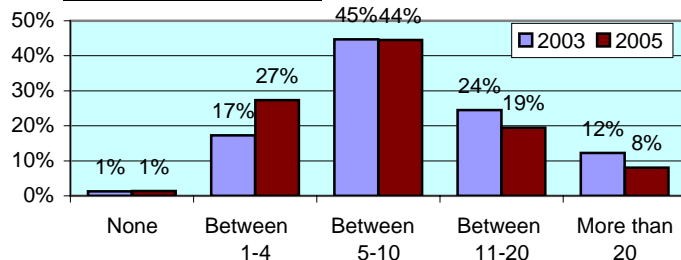
numbers indicate means of 7-point scale



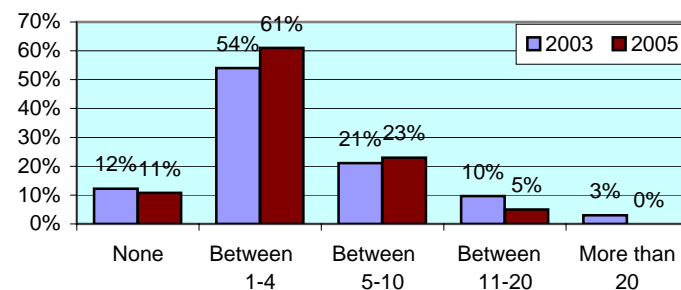
Office of Strategic Planning, Institutional Research & Effectiveness
 419 Rankin Hall, Tel: 237-2305, Fax: 237-4530
<http://irt2.indstate.edu/home/index.htm>

During the current school year, about how much reading and writing have you done?

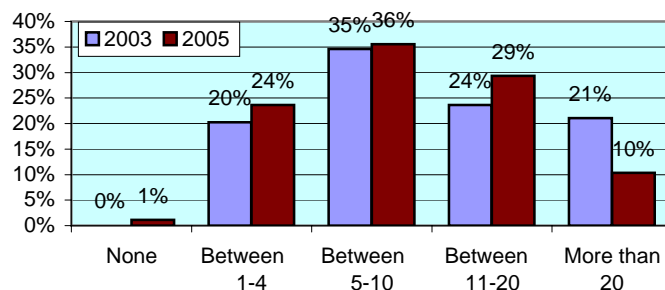
Number of assigned textbooks, books, or book-length packs of course readings *



Number of written papers or reports between 5 and 19 pages



Number of written papers or reports of fewer than 5 pages *



VII. PLANS DURING COLLEGE

Which of the following have you done or do you plan to do before you graduate from your institution?

Item		Not decided	No (2003) Won't do (2005)	Yes (2003) Plan to do (2005)	Done (2005)
Practicum, internship, field experience, co-op experience, or clinical assignment	2003	15	6	0	79
	2005	14	3	79	4
Community service or volunteer work	2003	21	13	0	67
	2005	18	7	37	38
Participate in a learning community	2003	29	22	0	49
	2005	31	12	20	37
Worked on a research project with a faculty member outside of course	2003	39	26	0	35
	2005	45	20	28	6
Foreign language coursework	2003	24	46	0	30
	2005	19	34	25	22
Study abroad	2003	36	43	0	21
	2005	36	37	25	2
Independent study or self-designed major	2003	29	54	0	17
	2005	39	47	11	4
Culminating senior experience (thesis, project, etc.)	2003	42	28	0	31
	2005	41	14	43	2