

Indiana State University

2005 NSSE Freshman Profile: College of Technology

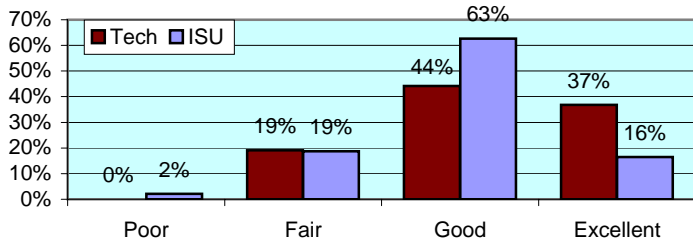
The National Survey of Student Engagement (NSSE) was administered to randomly selected ISU students in Spring 2005. The NSSE survey is designed to examine various aspects of a student's collegiate experience. Of the 705 students who completed the survey via the internet, 68 were from College of Technology. This report presents comparisons between Technology students and the rest of respondents. Separate reports including overall NSSE results are available upon request to the ISU campus community.

All numbers in this report are percentages unless otherwise stated.

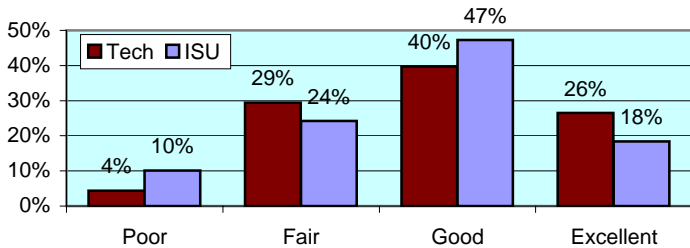
* item was found statistically significant in mean comparison

I. ABOUT INSTITUTION

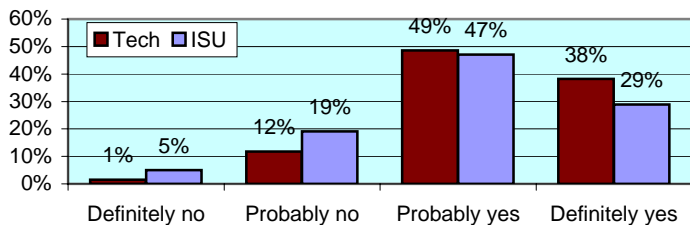
How would you evaluate your entire educational experience at this institution? *



Overall, how would you evaluate the quality of academic advising you have received at your institution?



If you could start over again, would you go to the same institution you are now attending? *

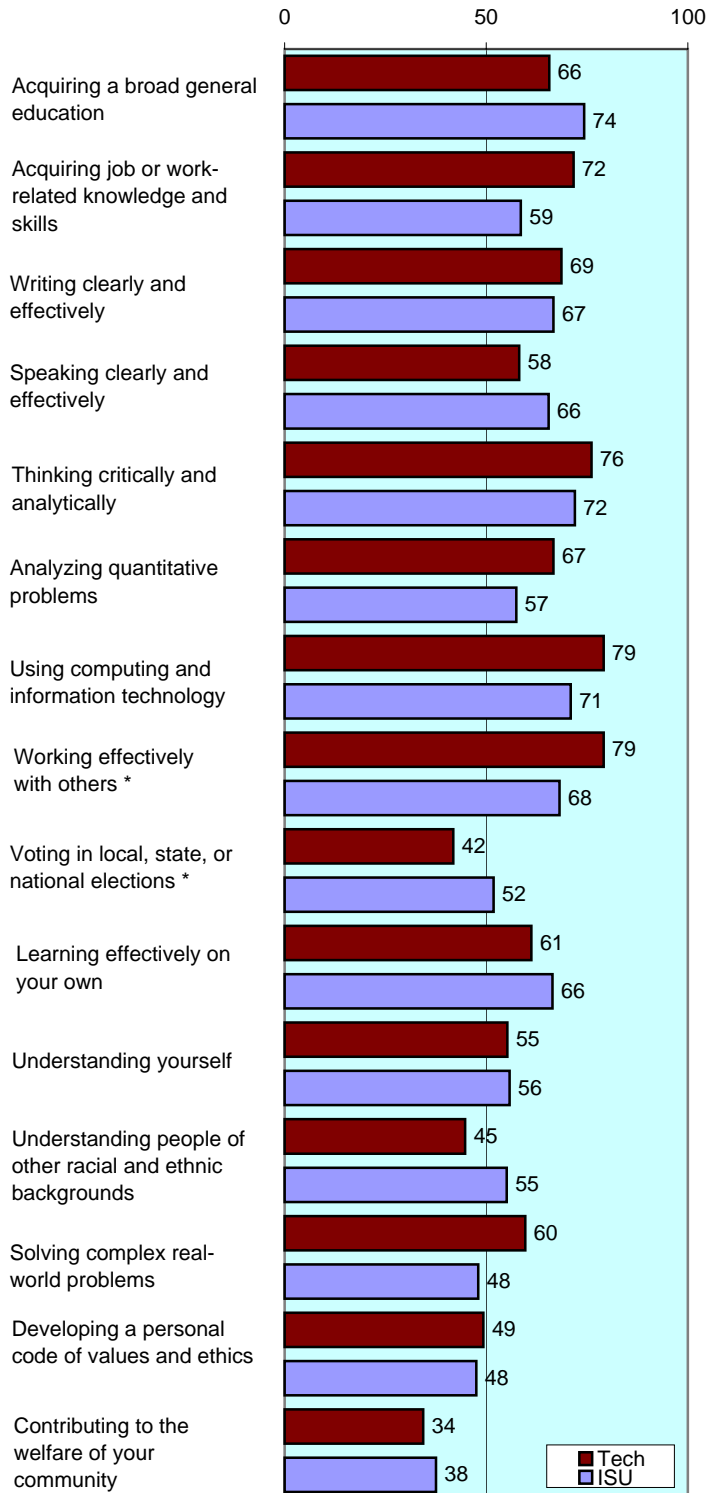


To what extent does your institution emphasize each of the following?

Items		Very little	Some	Quite a bit	Very much
Spending significant amounts of time studying and on academic work	Tech	4	28	43	24
	ISU	2	28	49	21
Providing the support you need to help you succeed academically	Tech	4	36	45	15
	ISU	5	33	48	14
Encouraging contact among students from different racial/ethnic backgrounds	Tech	24	27	30	19
	ISU	17	37	31	15
Helping you cope with your non-academic responsibilities	Tech	42	34	16	7
	ISU	34	39	21	7
Providing the support you need to thrive socially	Tech	28	34	33	4
	ISU	19	45	27	9
Attending campus events and activities (speakers, performances, etc.) *	Tech	25	31	30	13
	ISU	10	36	37	17
Using computers in academic work	Tech	4	13	39	43
	ISU	3	15	37	44

To what extent has your experience at this institution contributed to your knowledge, skills, and personal development in the following?

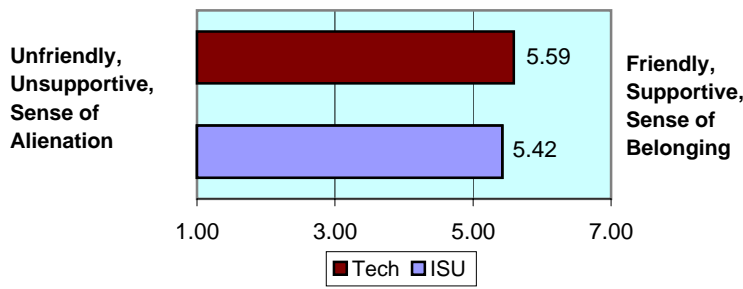
number is combined % who responded either 'very much' or 'quite a bit'



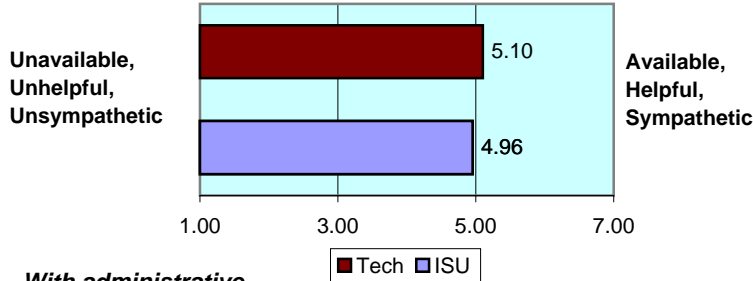
II. ABOUT RELATIONSHIPS

How would you rate your relationships with people at your institution?

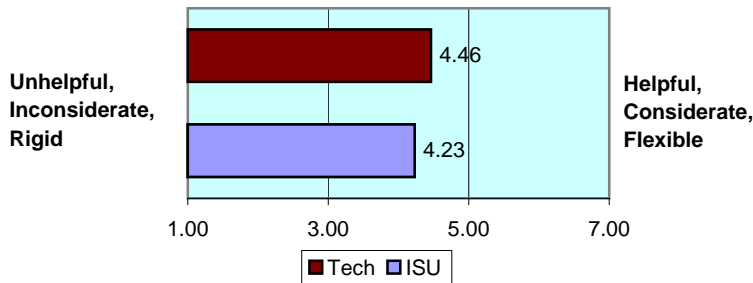
With other students... numbers indicate means of 7-point scale



With faculty members...



With administrative personnel & offices...



III. IN CLASSROOM

How often have you done each of the following?

Items		Never	Some-times	Often	Very often
Asked questions in class or contributed to class discussions	Tech	6	34	41	19
	ISU	3	41	38	18
Made a class presentation	Tech	3	57	32	7
	ISU	7	56	32	6
Prepared two or more drafts of a paper or assignment before turning it in	Tech	12	29	38	21
	ISU	13	38	32	17
Worked on a paper that required integrating ideas from various sources	Tech	3	29	43	25
	ISU	2	22	51	25
Included diverse perspectives in class discussions or assignments *	Tech	16	46	26	12
	ISU	7	38	38	16
Came to class without completing readings or assignments	Tech	16	65	12	7
	ISU	16	60	17	7
Put together ideas from different courses for assignments or class discussions	Tech	6	50	34	10
	ISU	5	46	41	8
Used an electronic medium to discuss or complete an assignment	Tech	18	37	26	19
	ISU	21	28	29	22
Worked harder than you thought you could to meet an instructor's expectations	Tech	10	47	32	10
	ISU	5	42	41	12

IV. INVOLVEMENT WITH FACULTY

How often have you done each of the following?

Items		Never	Some-times	Often	Very often
Used e-mail to communicate with an instructor	Tech	0	37	31	32
	ISU	2	24	41	33
Discussed grades or assignments with an instructor	Tech	10	43	32	15
	ISU	8	45	29	19
Talked about career plans with a faculty member or advisor *	Tech	12	53	28	7
	ISU	27	48	17	8
Discussed ideas from your classes with faculty outside of class	Tech	41	37	18	4
	ISU	48	34	13	5
Received prompt feedback from faculty on your performance	Tech	10	38	40	12
	ISU	5	44	41	10
Worked with faculty members on activities other than coursework	Tech	53	31	13	3
	ISU	54	31	12	3

V. INVOLVEMENT WITH OTHER STUDENTS

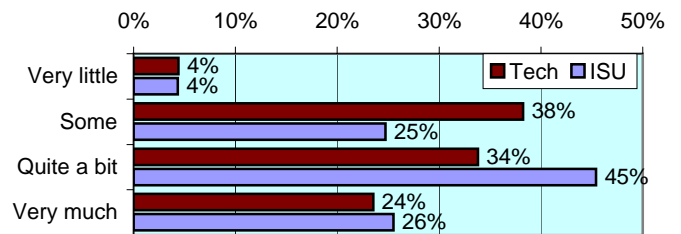
How often have you done each of the following?

Items		Never	Some-times	Often	Very often
Worked with other students on projects during class	Tech	9	44	34	13
	ISU	7	45	39	8
Worked with classmates outside of class to prepare assignments	Tech	10	59	22	9
	ISU	10	51	32	7
Tutored or taught other students (paid or voluntary)	Tech	62	29	9	0
	ISU	55	32	9	3
Discussed ideas from your classes with others outside of class	Tech	4	44	35	16
	ISU	8	42	33	16
Had serious conversations with students of a different race	Tech	21	38	24	18
	ISU	17	37	27	19
Had serious conversations with students who have different personal values from yours	Tech	16	26	35	22
	ISU	11	38	27	23

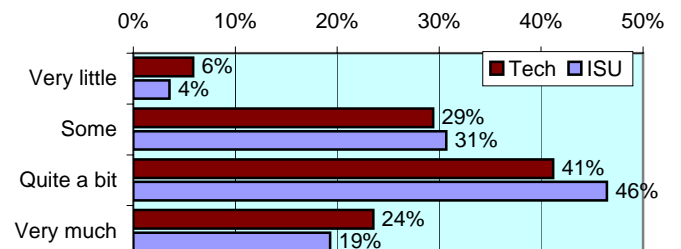
VI. ACADEMIC WORK

How much has your coursework emphasized the following mental activities?

Memorizing facts, ideas or methods from your courses and readings

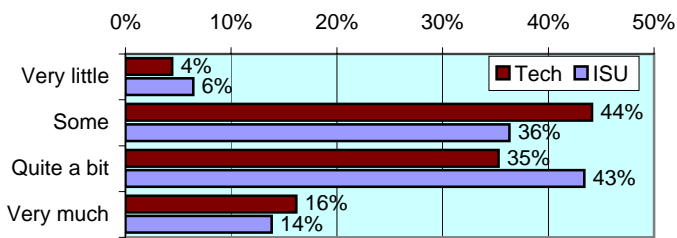


Analyzing the basic elements of an idea, experience or theory

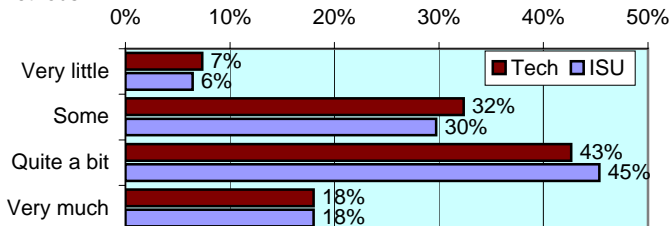


VI. ACADEMIC WORK (continued)

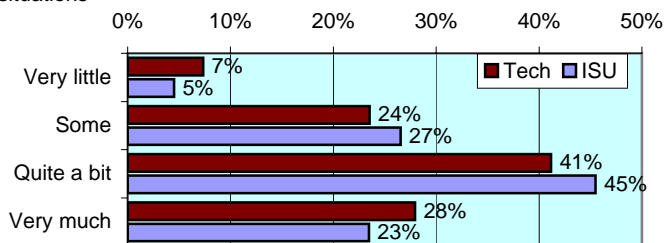
Synthesizing and organizing ideas, information, or experiences



Making judgments about the value of information, arguments, or methods



Applying theories or concepts to practical problems or in new situations



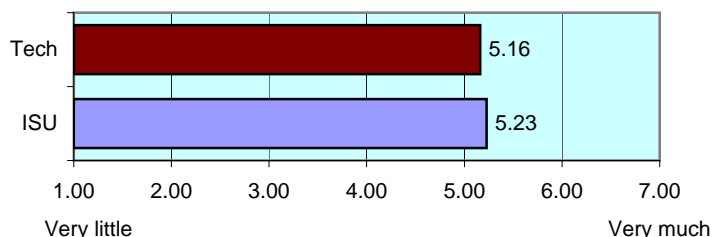
In a typical week, how many homework problem sets do you complete?

Items		None	1-2	3-4	More than 5
Number of problem sets that take you more than an hour to complete	Tech	18	43	24	16
	ISU	15	44	29	12
Number of problem sets that take you less than an hour to complete *	Tech	6	29	31	34
	ISU	8	37	32	22

During the current school year, about how often have you done each of the following?

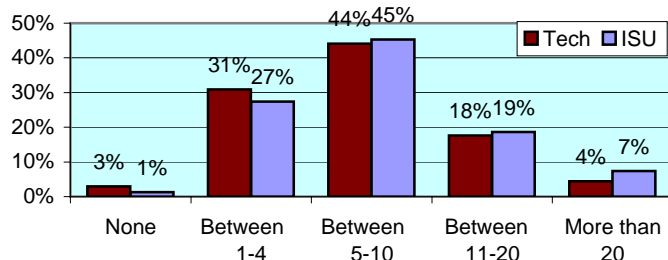
Items		Never	Some-times	Often	Very often
Examined the strengths and weaknesses of your own views on a topic	Tech	15	34	33	18
	ISU	10	43	35	13
Tried to better understand someone else's views by imagining how an issue looks from his or her perspective	Tech	7	46	32	15
	ISU	5	37	41	17
Learned something that changed the way you understand an issue or concept	Tech	3	38	40	19
	ISU	5	40	38	17

Mark the box that best represents the extent to which your examinations during the current school year have challenged you to do your best work numbers indicate means of 7-point scale

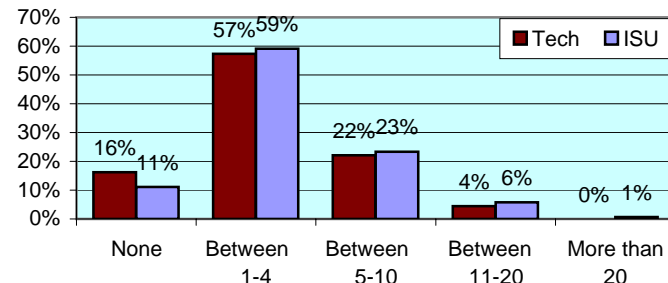


During the current school year, about how much reading and writing have you done?

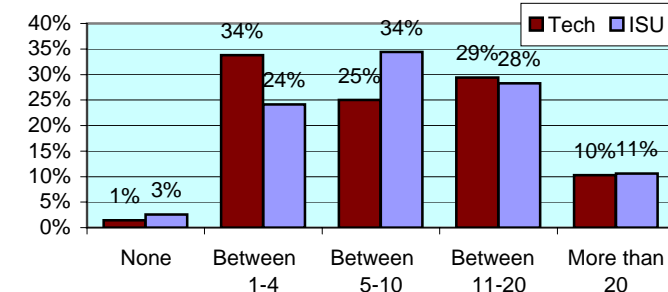
Number of assigned textbooks, books, or book-length packs of course readings



Number of written papers or reports between 5 and 19 pages



Number of written papers or reports of fewer than 5 pages



VII. PLANS DURING COLLEGE

Which of the following have you done or do you plan to do before you graduate from your institution?

Item		Not decided	Won't do	Plan to do	Done
Practicum, internship, field experience, co-op experience, or clinical assignment	Tech	22	4	66	7
	ISU	11	4	78	7
Community service or volunteer work *	Tech	25	15	30	30
	ISU	15	8	36	41
Participate in a learning community *	Tech	33	31	16	19
	ISU	30	15	21	34
Worked on a research project with a faculty member outside of course	Tech	36	31	19	13
	ISU	43	24	27	6
Foreign language coursework	Tech	15	34	30	21
	ISU	17	35	24	24
Study abroad	Tech	22	51	22	4
	ISU	34	40	23	2
Independent study or self-designed major	Tech	28	52	10	9
	ISU	38	47	12	3
Culminating senior experience (thesis, project, etc.)	Tech	31	13	51	4
	ISU	38	14	45	2



Office of Strategic Planning, Institutional Research & Effectiveness

419 Rankin Hall, Tel: 237-2305, Fax: 237-4530
<http://irt2.indstate.edu/home/index.htm>