

Indiana State University

2005 NSSE Freshman Profile: College of Education

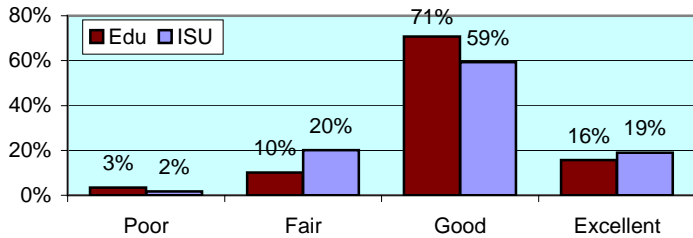
The National Survey of Student Engagement (NSSE) was administered to randomly selected ISU students in Spring 2005. The NSSE survey is designed to examine various aspects of a student's collegiate experience. Of the 705 students who completed the survey via the internet, 89 were from College of Education. This report presents comparisons between College of Education students and the rest of respondents. Separate reports including overall NSSE results are available upon request to the ISU campus community.

All numbers in this report are percentages unless otherwise stated.

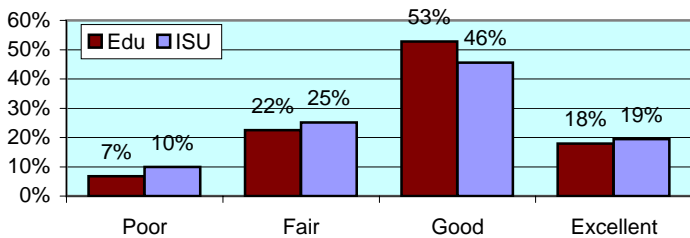
* item was found statistically significant in mean comparison

I. ABOUT INSTITUTION

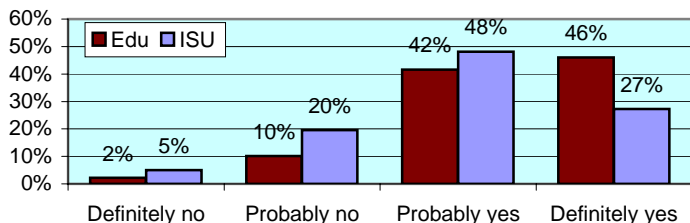
How would you evaluate your entire educational experience at this institution?



Overall, how would you evaluate the quality of academic advising you have received at your institution?



If you could start over again, would you go to the same institution you are now attending? *

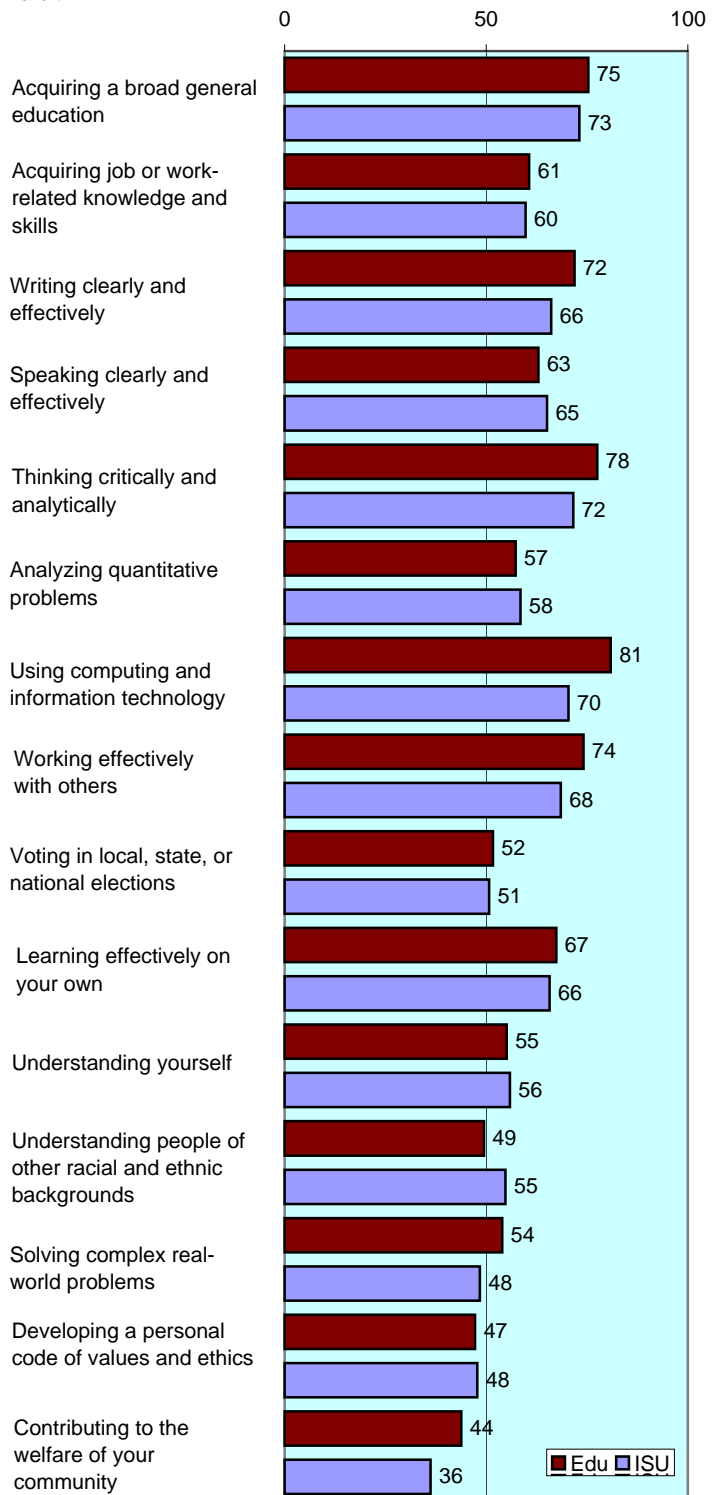


To what extent does your institution emphasize each of the following?

Items		Very little	Some	Quite a bit	Very much
Spending significant amounts of time studying and on academic work	Edu	1	26	54	19
	ISU	3	28	48	22
Providing the support you need to help you succeed academically	Edu	3	31	53	12
	ISU	5	34	46	14
Encouraging contact among students from different racial/ethnic backgrounds	Edu	11	38	38	12
	ISU	18	36	30	16
Helping you cope with your non-academic responsibilities *	Edu	20	39	35	6
	ISU	37	38	18	7
Providing the support you need to thrive socially *	Edu	16	39	33	12
	ISU	21	45	26	8
Attending campus events and activities (speakers, performances, etc.)	Edu	9	38	37	16
	ISU	12	35	36	17
Using computers in academic work	Edu	2	12	38	47
	ISU	4	16	37	43

To what extent has your experience at this institution contributed to your knowledge, skills, and personal development in the following?

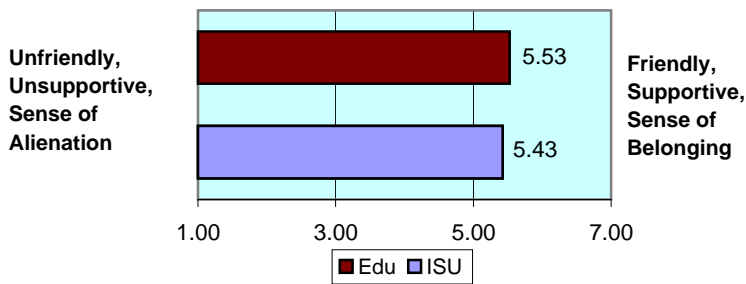
number is combined % who responded either 'very much' or 'quite a bit'



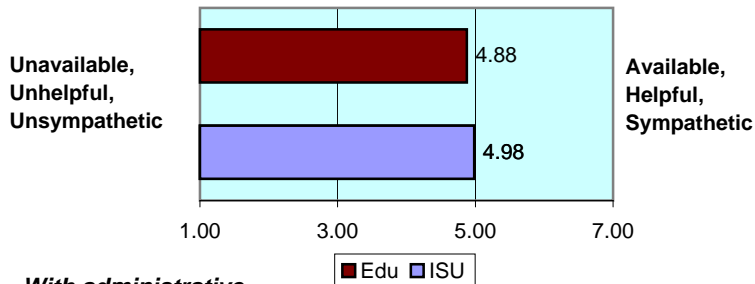
II. ABOUT RELATIONSHIPS

How would you rate your relationships with people at your institution?

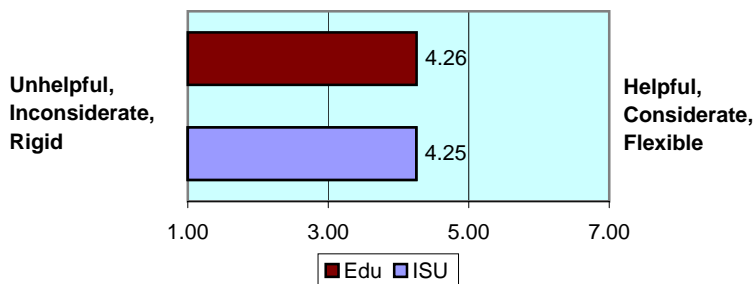
With other students... numbers indicate means of 7-point scale



With faculty members...



With administrative personnel & offices...



III. IN CLASSROOM

How often have you done each of the following?

Items		Never	Some-times	Often	Very often
Asked questions in class or contributed to class discussions	Edu	1	46	40	12
	ISU	4	39	38	19
Made a class presentation	Edu	13	51	26	10
	ISU	6	56	33	5
Prepared two or more drafts of a paper or assignment before turning it in	Edu	12	31	37	19
	ISU	13	38	32	17
Worked on a paper that required integrating ideas from various sources	Edu	2	25	48	25
	ISU	2	23	50	25
Included diverse perspectives in class discussions or assignments	Edu	9	34	38	19
	ISU	8	40	37	15
Came to class without completing readings or assignments	Edu	13	58	20	8
	ISU	16	61	16	7
Put together ideas from different courses for assignments or class discussions	Edu	6	46	36	12
	ISU	5	47	41	8
Used an electronic medium to discuss or complete an assignment	Edu	21	29	29	20
	ISU	20	29	29	22
Worked harder than you thought you could to meet an instructor's expectations	Edu	2	49	38	10
	ISU	6	42	41	12

IV. INVOLVEMENT WITH FACULTY

How often have you done each of the following?

Items		Never	Some-times	Often	Very often
Used e-mail to communicate with an instructor	Edu	1	22	49	27
	ISU	1	26	39	34
Discussed grades or assignments with an instructor	Edu	4	46	30	19
	ISU	8	44	29	18
Talked about career plans with a faculty member or advisor	Edu	27	49	17	7
	ISU	25	48	18	8
Discussed ideas from your classes with faculty outside of class	Edu	57	27	12	3
	ISU	46	35	14	5
Received prompt feedback from faculty on your performance	Edu	3	49	38	9
	ISU	6	43	41	10
Worked with faculty members on activities other than coursework	Edu	61	20	17	2
	ISU	52	32	12	3

V. INVOLVEMENT WITH OTHER STUDENTS

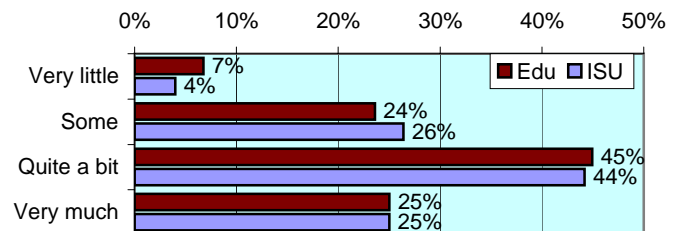
How often have you done each of the following?

Items		Never	Some-times	Often	Very often
Worked with other students on projects during class	Edu	7	36	47	10
	ISU	7	47	38	9
Worked with classmates outside of class to prepare assignments	Edu	11	44	37	8
	ISU	10	53	30	7
Tutored or taught other students (paid or voluntary)	Edu	54	33	11	2
	ISU	56	32	9	3
Discussed ideas from your classes with others outside of class	Edu	10	39	37	13
	ISU	7	43	33	16
Had serious conversations with students of a different race	Edu	15	45	29	11
	ISU	17	36	27	20
Had serious conversations with students who have different personal values from yours	Edu	13	37	30	19
	ISU	11	37	28	24

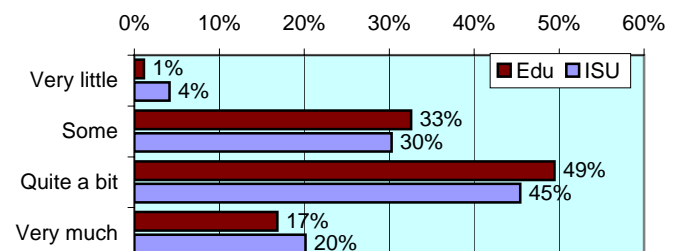
VI. ACADEMIC WORK

How much has your coursework emphasized the following mental activities?

Memorizing facts, ideas or methods from your courses and readings

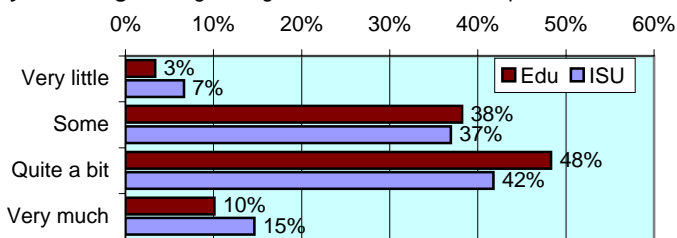


Analyzing the basic elements of an idea, experience or theory

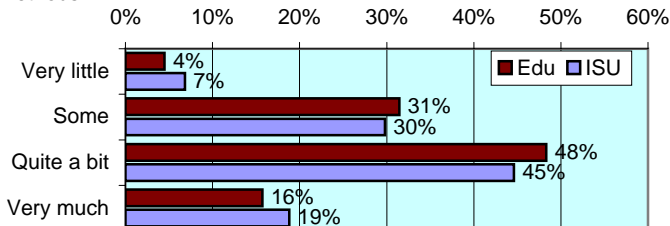


VI. ACADEMIC WORK (continued)

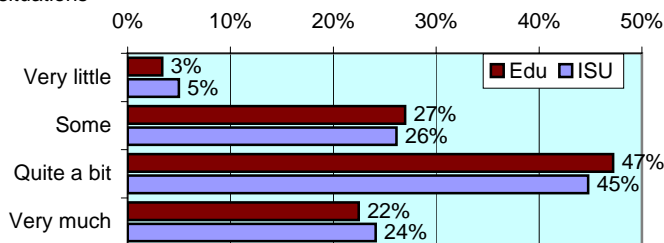
Synthesizing and organizing ideas, information, or experiences



Making judgments about the value of information, arguments, or methods



Applying theories or concepts to practical problems or in new situations



In a typical week, how many homework problem sets do you complete?

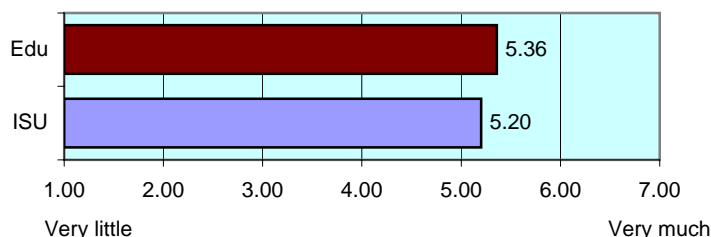
Items		None	1-2	3-4	More than 5
Number of problem sets that take you more than an hour to complete *	Edu	21	45	26	8
	ISU	14	44	29	13
Number of problem sets that take you less than an hour to complete	Edu	8	40	30	21
	ISU	8	36	32	24

During the current school year, about how often have you done each of the following?

Items		Never	Some- times	Often	Very often
Examined the strengths and weaknesses of your own views on a topic	Edu	11	45	34	10
	ISU	11	41	34	14
Tried to better understand someone else's views by imagining how an issue looks from his or her perspective	Edu	9	37	42	12
	ISU	5	38	40	18
Learned something that changed the way you understand an issue or concept	Edu	9	42	34	16
	ISU	4	40	38	18

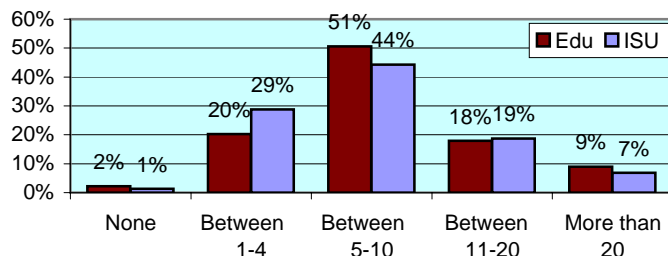
Mark the box that best represents the extent to which your examinations during the current school year have challenged you to do your best work

numbers indicate means of 7-point scale

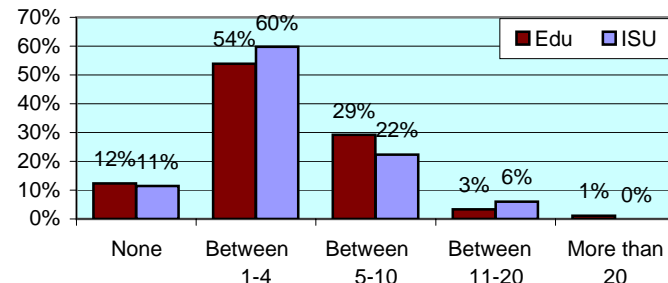


During the current school year, about how much reading and writing have you done?

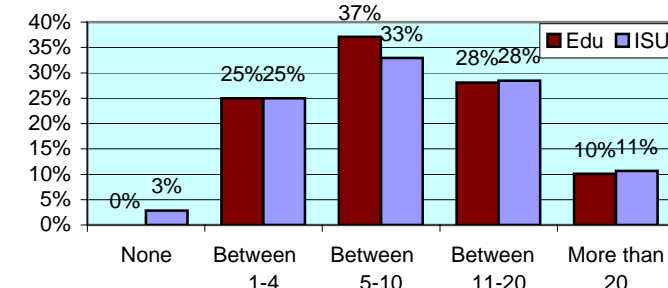
Number of assigned textbooks, books, or book-length packs of course readings



Number of written papers or reports between 5 and 19 pages



Number of written papers or reports of fewer than 5 pages



VII. PLANS DURING COLLEGE

Which of the following have you done or do you plan to do before you graduate from your institution?

Item		Not decided	Won't do	Plan to do	Done
Practicum, internship, field experience, co-op experience, or clinical assignment	Edu	12	2	76	9
	ISU	12	5	77	6
Community service or volunteer work	Edu	13	1	45	40
	ISU	17	9	34	39
Participate in a learning community	Edu	27	12	24	37
	ISU	31	17	20	32
Worked on a research project with a faculty member outside of course	Edu	49	22	24	4
	ISU	41	25	27	7
Foreign language coursework *	Edu	20	46	17	17
	ISU	16	33	26	25
Study abroad *	Edu	38	49	10	2
	ISU	32	40	25	2
Independent study or self-designed major	Edu	30	61	7	2
	ISU	38	46	13	4
Culminating senior experience (thesis, project, etc.)	Edu	37	15	47	1
	ISU	38	14	46	2



Office of Strategic Planning, Institutional Research & Effectiveness

419 Rankin Hall, Tel: 237-2305, Fax: 237-4530

<http://irt2.indstate.edu/home/index.htm>