

Indiana State University

2005 Freshman Student Profile: NSSE Edition

The National Survey of Student Engagement (NSSE) was administered to randomly selected ISU freshman students in Spring 2005. Out of 1,479 freshman students given the opportunity to participate, 705 students completed the survey via the internet, for a response rate of 48%. Due to new broader criteria for freshman students¹ proposed by NSSE this year, respondents were composed of students from different cohort groups. These different cohort groups included 448 (2004 cohort), 161 (2003 cohort), 7 (2002 cohort), and 89 (other) ISU students.

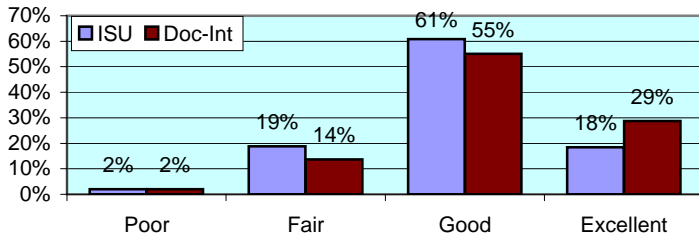
All numbers in this report are percentages unless otherwise stated.

1. defined by NSSE as students who completed less than 32 credit hours by the middle of Fall 2004

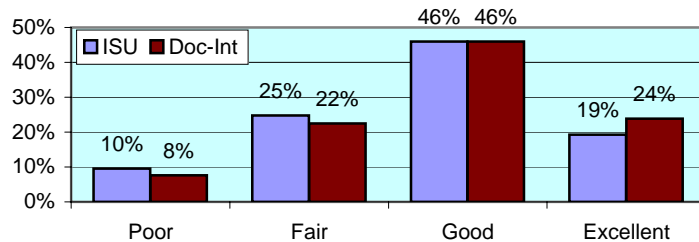
* item was found statistically significant in mean comparison

I. ABOUT INSTITUTION

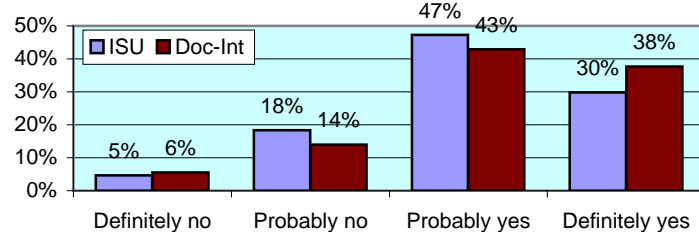
How would you evaluate your entire educational experience at this institution? *



Overall, how would you evaluate the quality of academic advising you have received at your institution? *



If you could start over again, would you go to the same institution you are now attending? *

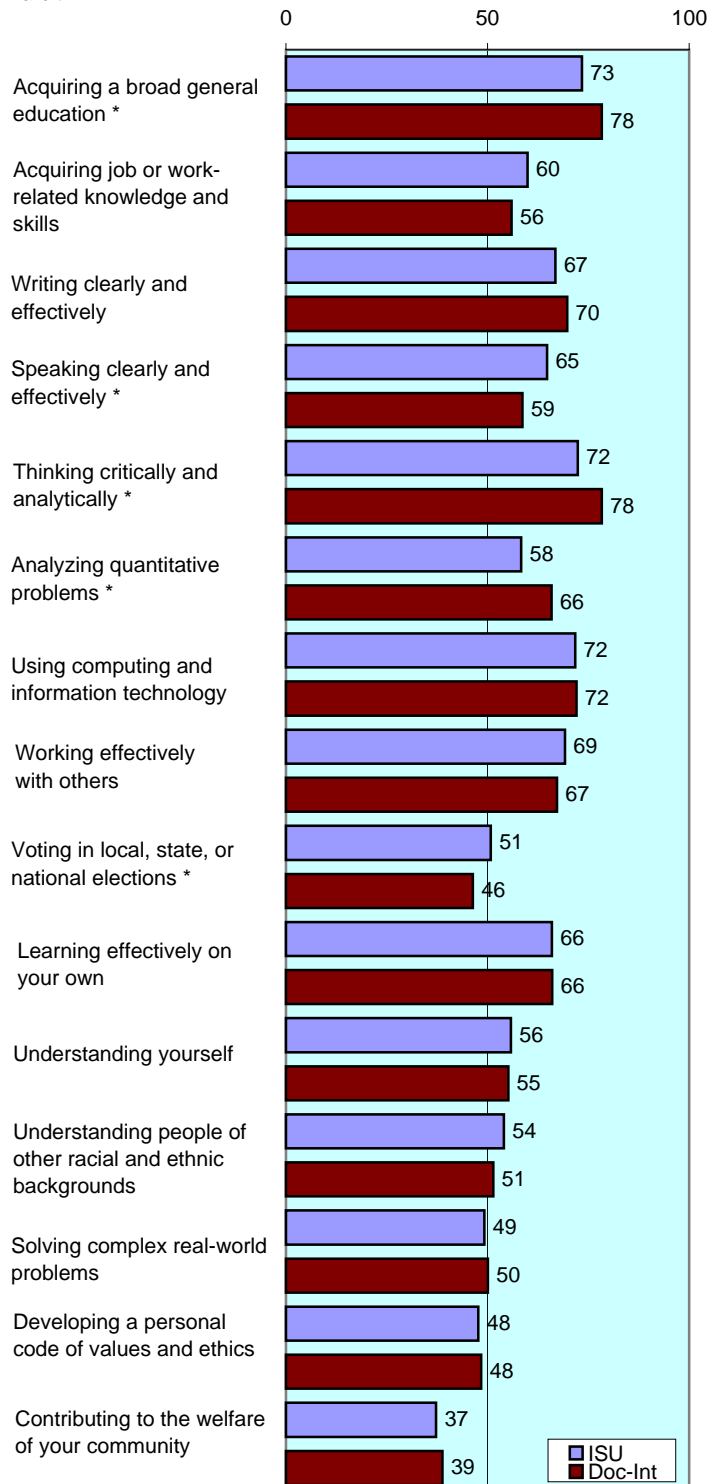


To what extent does your institution emphasize each of the following?

Items		Very little	Some	Quite a bit	Very much
		ISU	3	28	48
Spending significant amounts of time studying and on academic work *	Doc-Int	2	21	46	31
Providing the support you need to help you succeed academically *	ISU	5	34	47	14
	Doc-Int	4	24	45	26
Encouraging contact among students from different racial/ethnic backgrounds *	ISU	18	36	31	15
	Doc-Int	16	32	33	19
Helping you cope with your non-academic responsibilities	ISU	35	38	20	7
	Doc-Int	30	41	21	8
Providing the support you need to thrive socially	ISU	20	44	27	8
	Doc-Int	20	42	27	11
Attending campus events and activities (speakers, performances, etc.) *	ISU	12	35	36	17
	Doc-Int	12	30	38	20
Using computers in academic work *	ISU	3	15	38	44
	Doc-Int	2	13	34	51

To what extent has your experience at this institution contributed to your knowledge, skills, and personal development in the following?

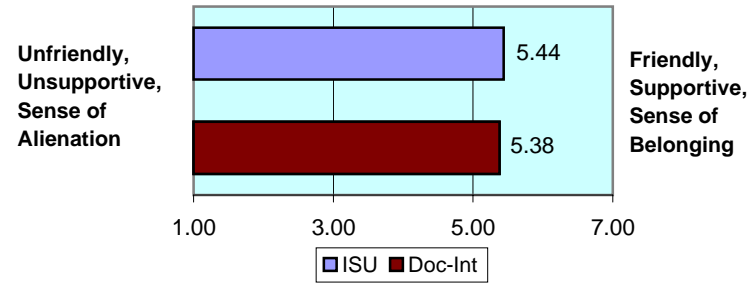
number is combined % who responded either 'very much' or 'quite a bit'



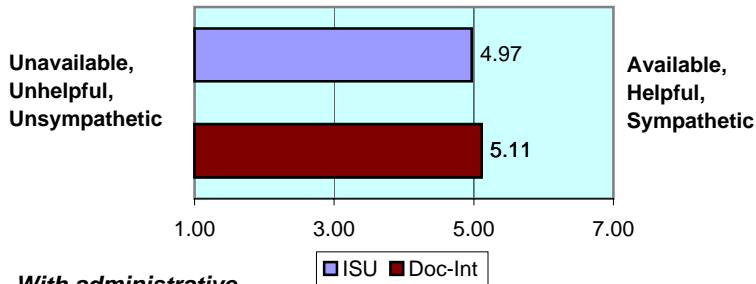
II. ABOUT RELATIONSHIPS

How would you rate your relationships with people at your institution?

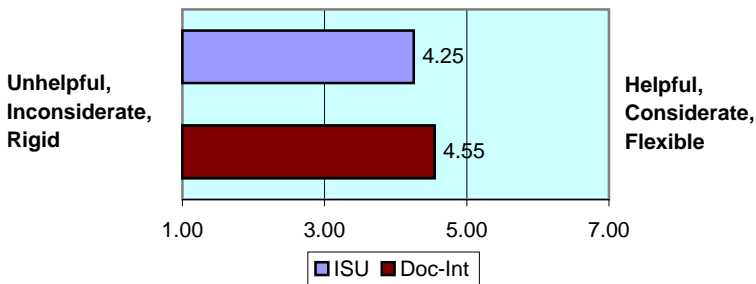
With other students... numbers indicate means of 7-point scale



With faculty members... *



With administrative personnel & offices... *



III. IN CLASSROOM

How often have you done each of the following?

Items		Never	Some-times	Often	Very often
Asked questions in class or contributed to class discussions	ISU	4	40	38	18
	Doc-Int	3	41	33	22
Made a class presentation *	ISU	7	56	32	6
	Doc-Int	15	55	23	7
Prepared two or more drafts of a paper or assignment before turning it in *	ISU	13	37	33	17
	Doc-Int	12	31	32	25
Worked on a paper that required integrating ideas from various sources *	ISU	2	23	50	25
	Doc-Int	2	22	43	33
Included diverse perspectives in class discussions or assignments *	ISU	8	39	37	16
	Doc-Int	7	33	39	22
Came to class without completing readings or assignments *	ISU	16	61	16	7
	Doc-Int	20	59	15	6
Put together ideas from different courses for assignments or class discussions	ISU	5	47	40	8
	Doc-Int	7	44	37	12
Used an electronic medium to discuss or complete an assignment *	ISU	21	29	29	22
	Doc-Int	17	29	28	26
Worked harder than you thought you could to meet an instructor's expectations	ISU	6	43	40	11
	Doc-Int	8	39	38	15

IV. INVOLVEMENT WITH FACULTY

How often have you done each of the following?

Items		Never	Some-times	Often	Very often
Used e-mail to communicate with an instructor	ISU	1	26	40	33
	Doc-Int	3	27	36	34
Discussed grades or assignments with an instructor	ISU	8	45	29	18
	Doc-Int	8	45	31	16
Talked about career plans with a faculty member or advisor	ISU	25	48	18	8
	Doc-Int	26	47	19	8
Discussed ideas from your classes with faculty outside of class	ISU	47	34	14	5
	Doc-Int	44	39	12	5
Received prompt feedback from faculty on your performance *	ISU	6	43	41	10
	Doc-Int	6	34	45	16
Worked with faculty members on activities other than coursework *	ISU	54	31	12	3
	Doc-Int	61	26	10	4

V. INVOLVEMENT WITH OTHER STUDENTS

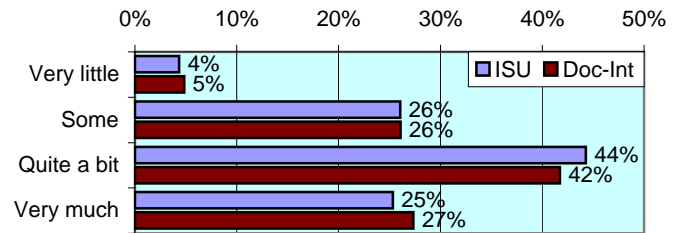
How often have you done each of the following?

Items		Never	Some-times	Often	Very often
Worked with other students on projects during class	ISU	7	45	39	9
	Doc-Int	10	45	33	11
Worked with classmates outside of class to prepare assignments	ISU	10	52	31	7
	Doc-Int	14	47	29	11
Tutored or taught other students (paid or voluntary) *	ISU	56	32	9	3
	Doc-Int	49	34	11	5
Discussed ideas from your classes with others outside of class *	ISU	8	43	34	16
	Doc-Int	6	39	35	19
Had serious conversations with students of a different race *	ISU	17	37	27	18
	Doc-Int	14	34	27	25
Had serious conversations with students who have different personal values from yours *	ISU	12	37	28	23
	Doc-Int	11	31	30	28

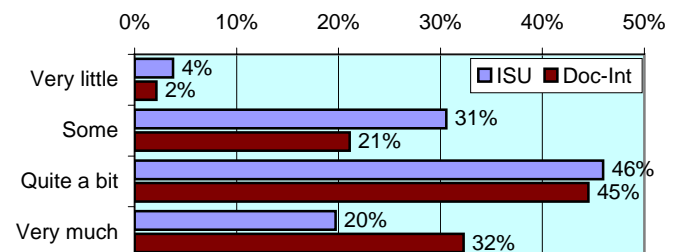
VI. ACADEMIC WORK

How much has your coursework emphasized the following mental activities?

Memorizing facts, ideas or methods from your courses and readings

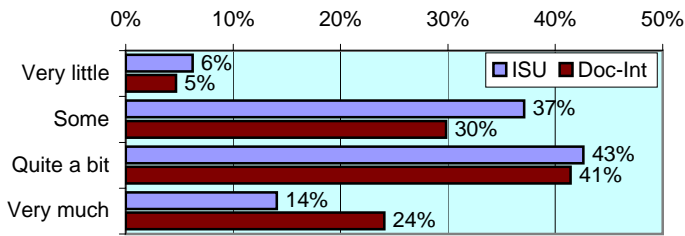


Analyzing the basic elements of an idea, experience or theory *

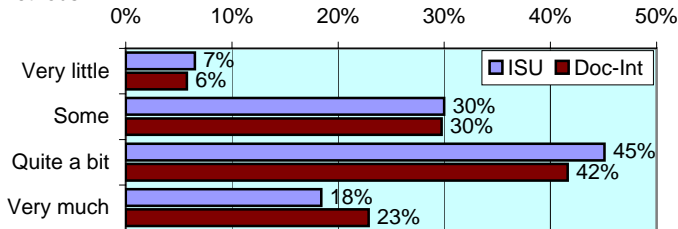


VI. ACADEMIC WORK (continued)

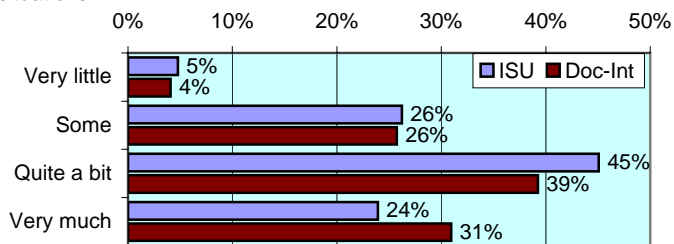
Synthesizing and organizing ideas, information, or experiences *



Making judgments about the value of information, arguments, or methods



Applying theories or concepts to practical problems or in new situations *



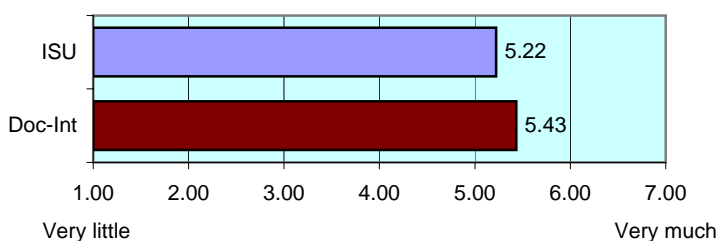
In a typical week, how many homework problem sets do you complete?

Items		None	1-2	3-4	More than 5
Number of problem sets that take you more than an hour to complete *	ISU	15	44	28	12
	Doc-Int	15	38	30	17
Number of problem sets that take you less than an hour to complete *	ISU	8	37	32	23
	Doc-Int	14	36	26	24

During the current school year, about how often have you done each of the following?

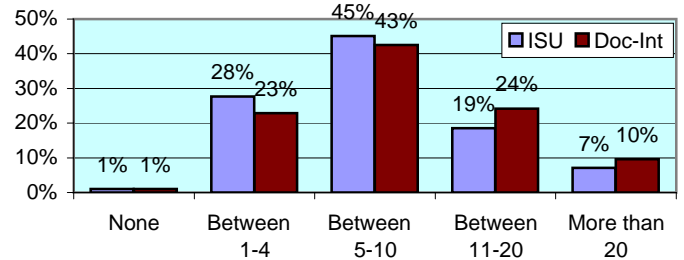
Items		Never	Some-times	Often	Very often
Examined the strengths and weaknesses of your own views on a topic	ISU	11	42	34	13
	Doc-Int	11	40	32	16
Tried to better understand someone else's views by imagining how an issue looks from his or her perspective *	ISU	5	38	40	17
	Doc-Int	5	35	38	22
Learned something that changed the way you understand an issue or concept *	ISU	5	40	38	17
	Doc-Int	4	37	37	21

Mark the box that best represents the extent to which your examinations during the current school year have challenged you to do your best work * numbers indicate means of 7-point scale

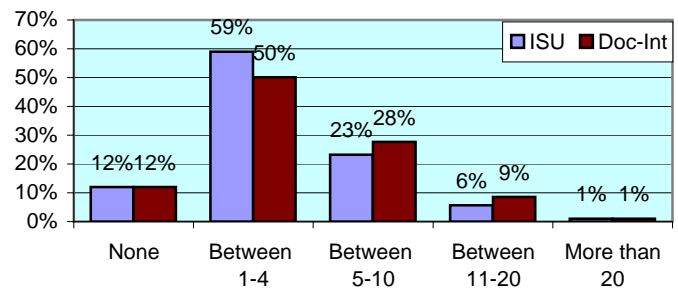


During the current school year, about how much reading and writing have you done?

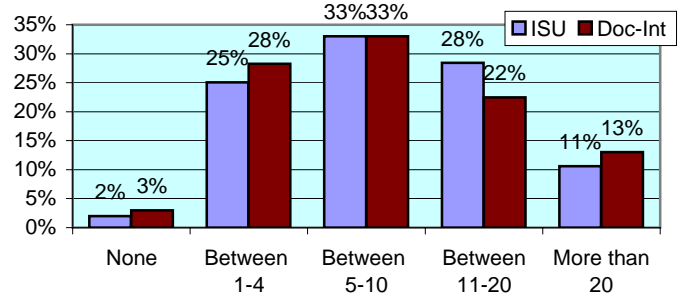
Number of assigned textbooks, books, or book-length packs of course readings *



Number of written papers or reports between 5 and 19 pages *



Number of written papers or reports of fewer than 5 pages



VII. PLANS DURING COLLEGE

Which of the following have you done or do you plan to do before you graduate from your institution?

Item		Not decided	Won't do	Plan to do	Done
Practicum, internship, field experience, co-op experience, or clinical assignment	ISU	12	4	77	7
	Doc-Int	14	3	76	7
Community service or volunteer work	ISU	16	8	36	40
	Doc-Int	15	7	40	39
Participate in a learning community *	ISU	30	17	21	32
	Doc-Int	34	29	21	16
Worked on a research project with a faculty member outside of course	ISU	42	25	27	6
	Doc-Int	40	25	30	5
Foreign language coursework	ISU	17	35	24	24
	Doc-Int	18	29	31	21
Study abroad	ISU	33	41	23	2
	Doc-Int	30	30	38	3
Independent study or self-designed major	ISU	37	48	12	4
	Doc-Int	35	47	15	3
Culminating senior experience (thesis, project, etc.)	ISU	38	14	46	2
	Doc-Int	40	11	47	1



Office of Strategic Planning, Institutional Research & Effectiveness

419 Rankin Hall, Tel: 237-2305, Fax: 237-4530
<http://irt2.indstate.edu/home/index.htm>