

Indiana State University

2005 NSSE Freshman Profile: College of Nursing

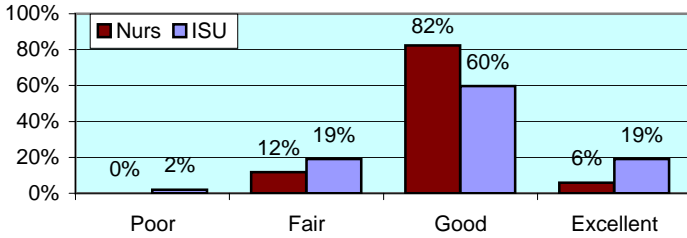
The National Survey of Student Engagement (NSSE) was administered to randomly selected ISU students in Spring 2005. The NSSE survey is designed to examine various aspects of a student's collegiate experience. Of the 705 students who completed the survey via the internet, 34 were from College of Nursing. This report presents comparisons between Nursing students and the rest of respondents. Separate reports including overall NSSE results are available upon request to the ISU campus community.

All numbers in this report are percentages unless otherwise stated.

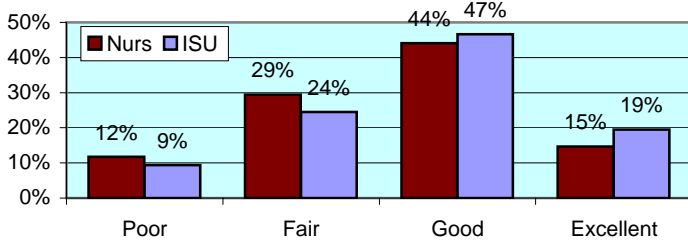
* item was found statistically significant in mean comparison

I. ABOUT INSTITUTION

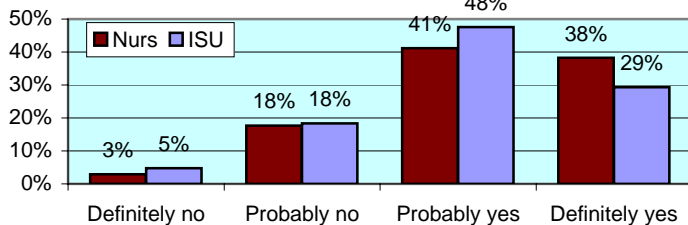
How would you evaluate your entire educational experience at this institution?



Overall, how would you evaluate the quality of academic advising you have received at your institution?



If you could start over again, would you go to the same institution you are now attending?

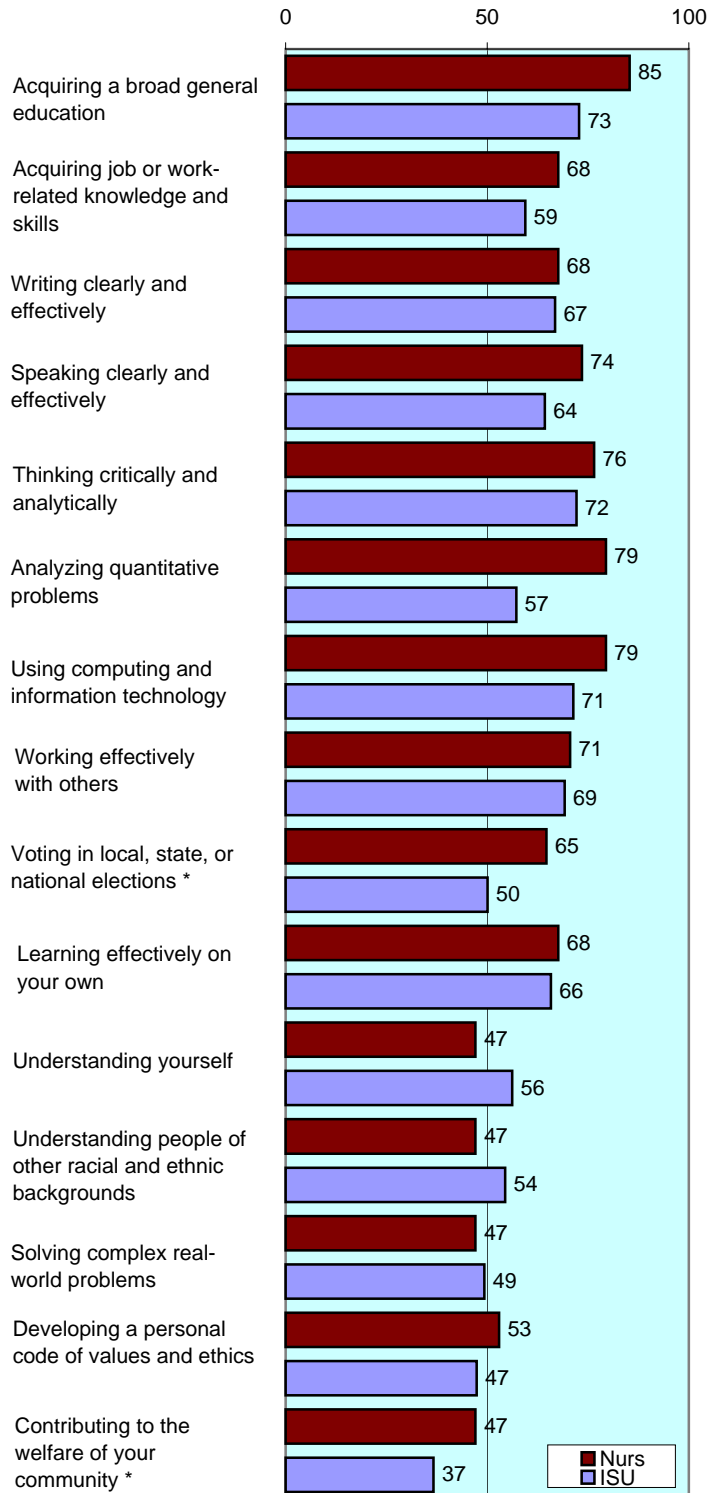


To what extent does your institution emphasize each of the following?

Items		Very little	Some	Quite a bit	Very much
		Nurs	3	15	47
Spending significant amounts of time studying and on academic work *	ISU	3	28	48	21
Providing the support you need to help you succeed academically	Nurs	6	29	50	15
	ISU	5	34	47	14
Encouraging contact among students from different racial/ethnic backgrounds	Nurs	18	32	24	26
	ISU	18	36	32	15
Helping you cope with your non-academic responsibilities	Nurs	38	38	21	3
	ISU	34	38	20	7
Providing the support you need to thrive socially	Nurs	18	50	21	12
	ISU	20	44	28	8
Attending campus events and activities (speakers, performances, etc.)	Nurs	6	26	59	9
	ISU	12	36	35	17
Using computers in academic work	Nurs	6	15	29	50
	ISU	3	15	38	43

To what extent has your experience at this institution contributed to your knowledge, skills, and personal development in the following?

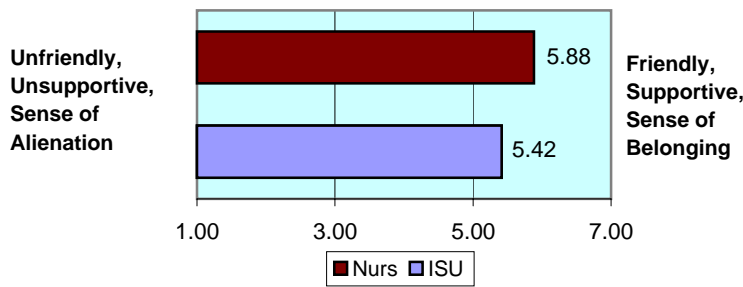
number is combined % who responded either 'very much' or 'quite a bit'



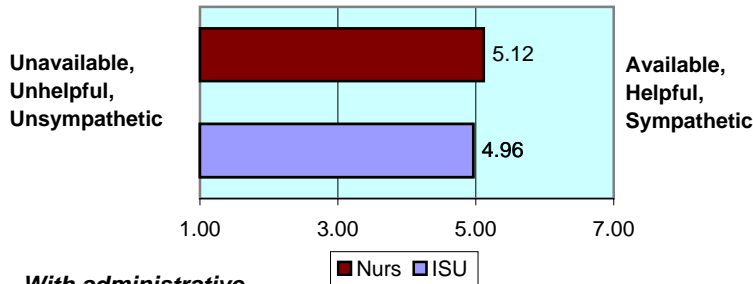
II. ABOUT RELATIONSHIPS

How would you rate your relationships with people at your institution?

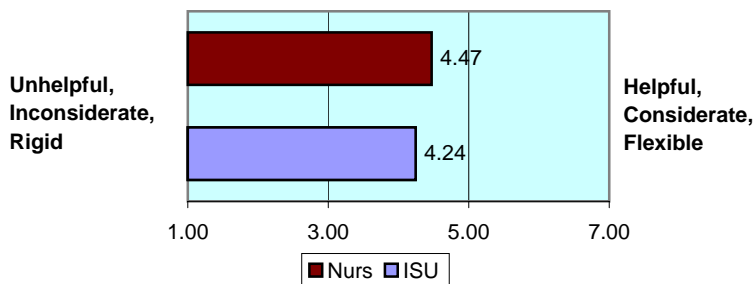
*With other students...** numbers indicate means of 7-point scale



With faculty members...



With administrative personnel & offices...



III. IN CLASSROOM

How often have you done each of the following?

Items		Never	Some-times	Often	Very often
Asked questions in class or contributed to class discussions	Nurs	3	38	29	29
	ISU	4	40	38	18
Made a class presentation	Nurs	0	50	44	6
	ISU	7	56	31	6
Prepared two or more drafts of a paper or assignment before turning it in	Nurs	9	35	24	32
	ISU	13	37	33	17
Worked on a paper that required integrating ideas from various sources *	Nurs	0	15	41	44
	ISU	2	23	51	24
Included diverse perspectives in class discussions or assignments	Nurs	3	38	44	15
	ISU	8	39	37	16
Came to class without completing readings or assignments *	Nurs	35	47	12	6
	ISU	15	61	16	7
Put together ideas from different courses for assignments or class discussions	Nurs	3	47	35	15
	ISU	5	46	40	8
Used an electronic medium to discuss or complete an assignment	Nurs	18	15	38	29
	ISU	21	30	28	21
Worked harder than you thought you could to meet an instructor's expectations *	Nurs	3	29	47	21
	ISU	6	43	40	11

IV. INVOLVEMENT WITH FACULTY

How often have you done each of the following?

Items		Never	Some-times	Often	Very often
Used e-mail to communicate with an instructor *	Nurs	3	15	29	53
	ISU	1	26	40	32
Discussed grades or assignments with an instructor	Nurs	6	35	29	29
	ISU	8	45	29	18
Talked about career plans with a faculty member or advisor	Nurs	29	44	18	9
	ISU	25	48	18	8
Discussed ideas from your classes with faculty outside of class	Nurs	47	32	15	6
	ISU	47	34	14	5
Received prompt feedback from faculty on your performance	Nurs	9	38	38	15
	ISU	5	44	41	10
Worked with faculty members on activities other than coursework	Nurs	53	29	12	6
	ISU	54	31	12	3

V. INVOLVEMENT WITH OTHER STUDENTS

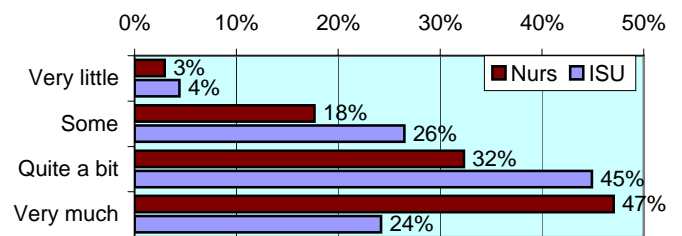
How often have you done each of the following?

Items		Never	Some-times	Often	Very often
Worked with other students on projects during class	Nurs	3	41	47	9
	ISU	7	46	38	9
Worked with classmates outside of class to prepare assignments *	Nurs	0	35	44	21
	ISU	11	52	30	7
Tutored or taught other students (paid or voluntary)	Nurs	53	26	15	6
	ISU	56	32	9	3
Discussed ideas from your classes with others outside of class	Nurs	3	50	35	12
	ISU	8	42	33	16
Had serious conversations with students of a different race	Nurs	26	26	24	24
	ISU	17	38	27	18
Had serious conversations with students who have different personal values from yours	Nurs	21	32	26	21
	ISU	11	37	28	23

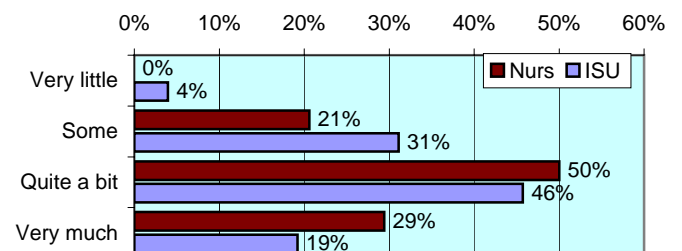
VI. ACADEMIC WORK

How much has your coursework emphasized the following mental activities?

Memorizing facts, ideas or methods from your courses and readings *

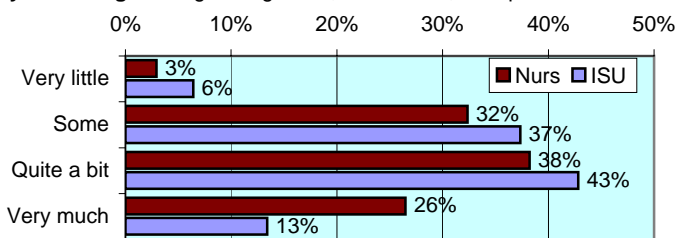


Analyzing the basic elements of an idea, experience or theory *

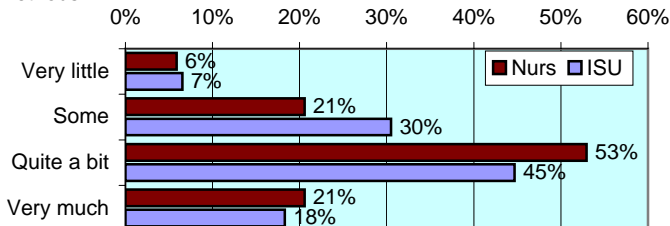


VI. ACADEMIC WORK (continued)

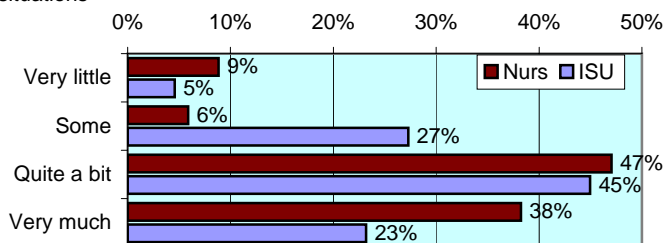
Synthesizing and organizing ideas, information, or experiences



Making judgments about the value of information, arguments, or methods



Applying theories or concepts to practical problems or in new situations



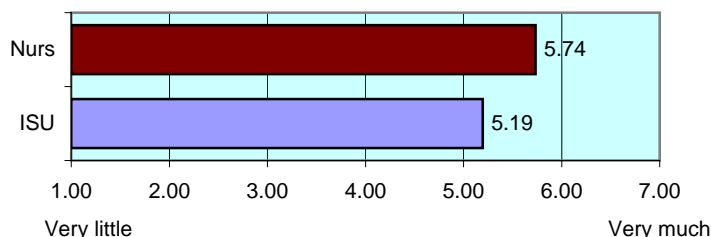
In a typical week, how many homework problem sets do you complete?

Items		None	1-2	3-4	More than 5
Number of problem sets that take you more than an hour to complete	Nurs	15	35	35	15
	ISU	15	45	28	12
Number of problem sets that take you less than an hour to complete	Nurs	21	32	24	24
	ISU	7	37	32	23

During the current school year, about how often have you done each of the following?

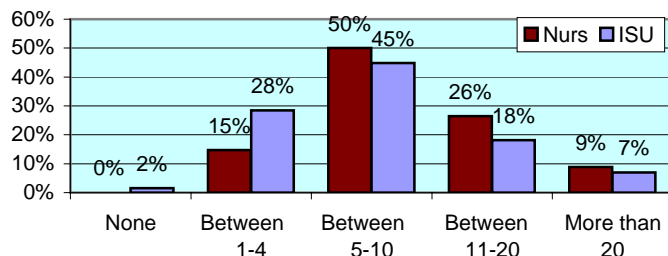
Items		Never	Some-times	Often	Very often
Examined the strengths and weaknesses of your own views on a topic	Nurs	24	32	32	12
	ISU	10	42	34	13
Tried to better understand someone else's views by imagining how an issue looks from his or her perspective	Nurs	6	38	44	12
	ISU	5	38	40	17
Learned something that changed the way you understand an issue or concept	Nurs	6	38	47	9
	ISU	5	40	37	18

Mark the box that best represents the extent to which your examinations during the current school year have challenged you to do your best work * numbers indicate means of 7-point scale

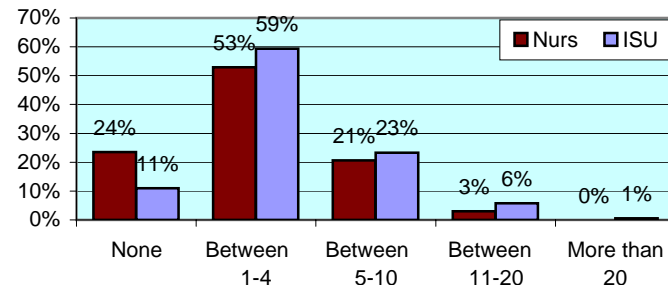


During the current school year, about how much reading and writing have you done?

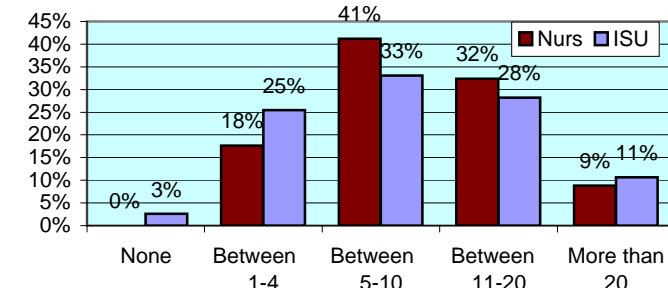
Number of assigned textbooks, books, or book-length packs of course readings



Number of written papers or reports between 5 and 19 pages



Number of written papers or reports of fewer than 5 pages



VII. PLANS DURING COLLEGE

Which of the following have you done or do you plan to do before you graduate from your institution?

Item		Not decided	Won't do	Plan to do	Done
Practicum, internship, field experience, co-op experience, or clinical assignment	Nurs	3	3	88	6
	ISU	13	5	76	7
Community service or volunteer work *	Nurs	3	3	18	76
	ISU	17	9	37	38
Participate in a learning community	Nurs	26	12	18	44
	ISU	31	17	21	32
Worked on a research project with a faculty member outside of course	Nurs	47	15	29	9
	ISU	42	25	26	6
Foreign language coursework	Nurs	18	35	9	38
	ISU	16	35	25	23
Study abroad	Nurs	32	56	12	0
	ISU	33	41	24	2
Independent study or self-designed major	Nurs	24	59	12	6
	ISU	37	47	12	4
Culminating senior experience (thesis, project, etc.)	Nurs	32	9	59	0
	ISU	38	14	45	2



Office of Strategic Planning, Institutional Research & Effectiveness

419 Rankin Hall, Tel: 237-2305, Fax: 237-4530

<http://irt2.indstate.edu/home/index.htm>