

Indiana State University

2005 NSSE Freshman Profile: College of Health & Human Performance

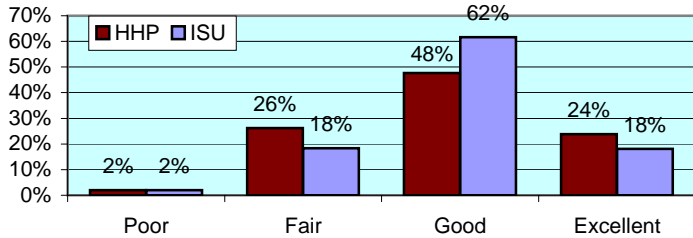
The National Survey of Student Engagement (NSSE) was administered to randomly selected ISU students in Spring 2005. The NSSE survey is designed to examine various aspects of a student's collegiate experience. Of the 705 students who completed the survey via the internet, 42 were from College of Health & Human Performance (HHP). This report presents comparisons between HHP students and the rest of respondents. Separate reports including overall NSSE results are available upon request to the ISU campus community.

All numbers in this report are percentages unless otherwise stated.

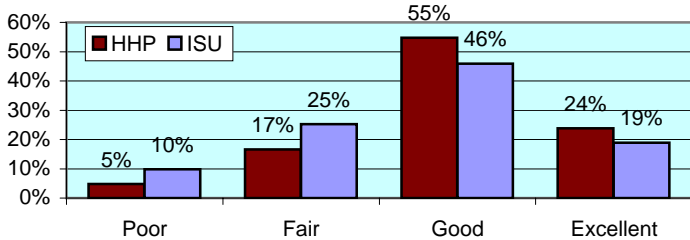
* item was found statistically significant in mean comparison

I. ABOUT INSTITUTION

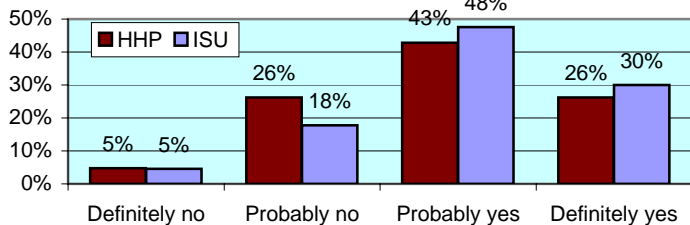
How would you evaluate your entire educational experience at this institution?



Overall, how would you evaluate the quality of academic advising you have received at your institution?



If you could start over again, would you go to the same institution you are now attending?

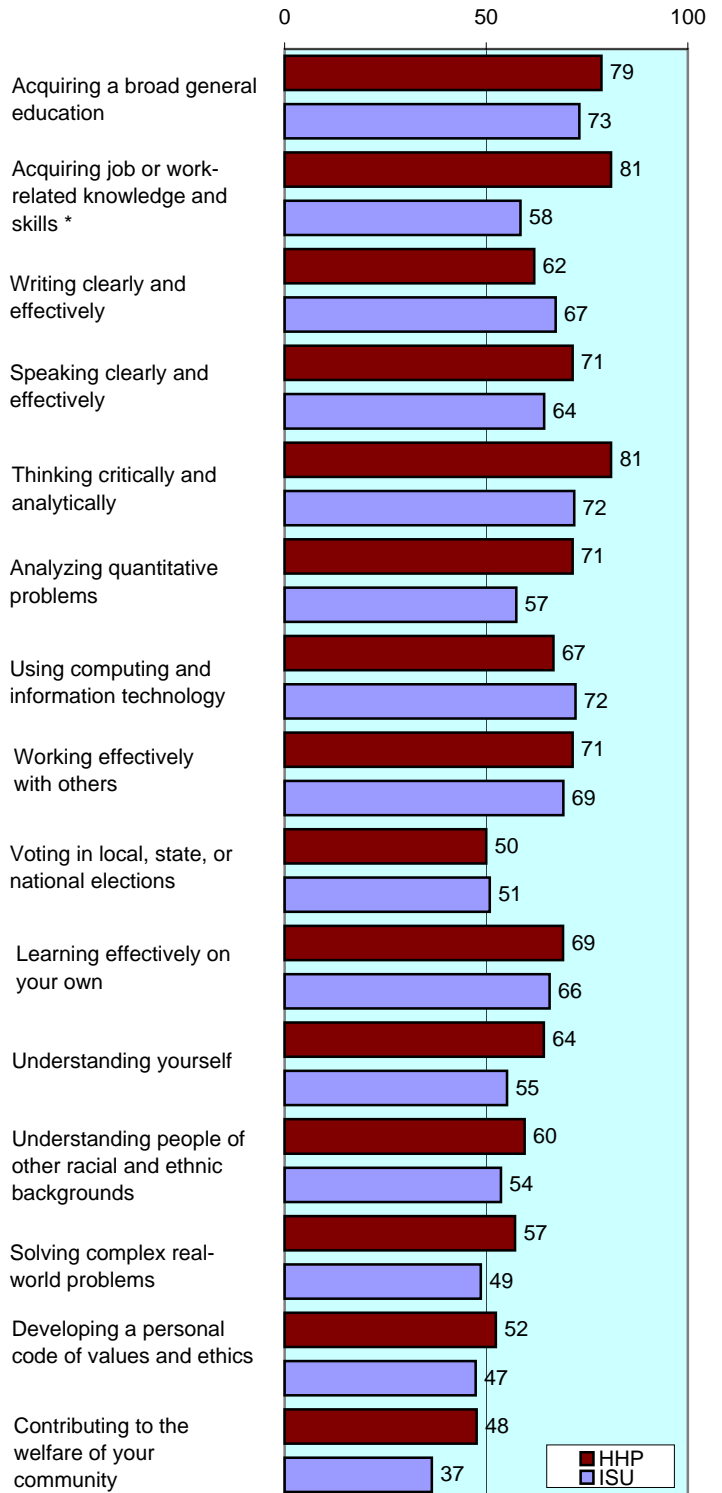


To what extent does your institution emphasize each of the following?

Items		Very little	Some	Quite a bit	Very much
Spending significant amounts of time studying and on academic work	HHP	2	26	40	31
	ISU	3	28	49	21
Providing the support you need to help you succeed academically	HHP	2	33	45	19
	ISU	5	34	47	14
Encouraging contact among students from different racial/ethnic backgrounds	HHP	19	31	26	24
	ISU	17	36	31	15
Helping you cope with your non-academic responsibilities	HHP	36	29	24	12
	ISU	34	39	20	6
Providing the support you need to thrive socially	HHP	24	29	33	14
	ISU	20	45	27	8
Attending campus events and activities (speakers, performances, etc.) *	HHP	12	19	40	29
	ISU	12	36	36	16
Using computers in academic work	HHP	7	17	43	33
	ISU	3	15	37	44

To what extent has your experience at this institution contributed to your knowledge, skills, and personal development in the following?

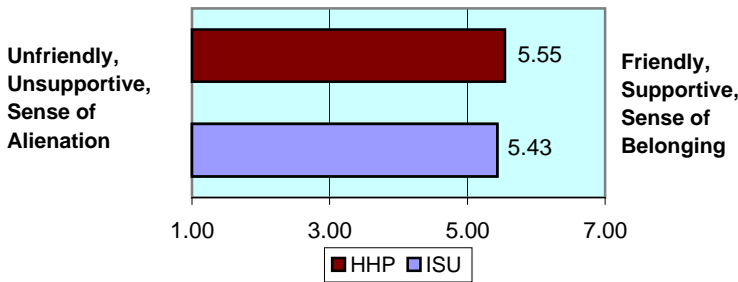
number is combined % who responded either 'very much' or 'quite a bit'



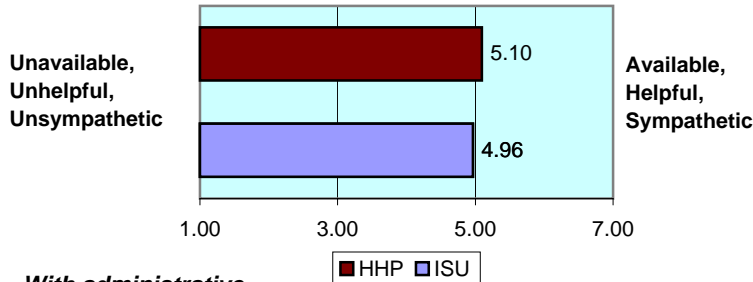
II. ABOUT RELATIONSHIPS

How would you rate your relationships with people at your institution?

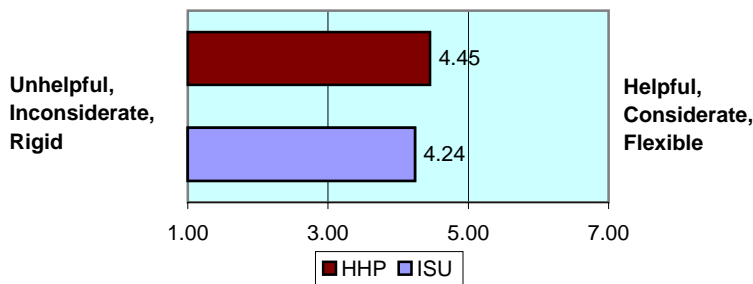
With other students... numbers indicate means of 7-point scale



With faculty members...



With administrative personnel & offices...



III. IN CLASSROOM

How often have you done each of the following?

Items		Never	Some-times	Often	Very often
Asked questions in class or contributed to class discussions	HHP	2	43	38	17
	ISU	4	40	38	19
Made a class presentation	HHP	12	46	39	2
	ISU	6	56	31	6
Prepared two or more drafts of a paper or assignment before turning it in	HHP	19	31	36	14
	ISU	13	37	32	18
Worked on a paper that required integrating ideas from various sources	HHP	5	5	74	17
	ISU	2	24	49	25
Included diverse perspectives in class discussions or assignments	HHP	7	38	45	10
	ISU	8	39	37	16
Came to class without completing readings or assignments	HHP	10	67	17	7
	ISU	16	60	16	7
Put together ideas from different courses for assignments or class discussions	HHP	5	41	46	7
	ISU	5	47	40	8
Used an electronic medium to discuss or complete an assignment	HHP	10	27	39	24
	ISU	21	29	28	21
Worked harder than you thought you could to meet an instructor's expectations	HHP	5	36	48	12
	ISU	6	43	40	11

IV. INVOLVEMENT WITH FACULTY

How often have you done each of the following?

Items		Never	Some-times	Often	Very often
Used e-mail to communicate with an instructor *	HHP	0	12	43	45
	ISU	2	27	40	32
Discussed grades or assignments with an instructor	HHP	10	36	33	21
	ISU	8	45	29	18
Talked about career plans with a faculty member or advisor	HHP	17	50	17	17
	ISU	26	48	18	8
Discussed ideas from your classes with faculty outside of class	HHP	40	38	19	2
	ISU	48	34	13	5
Received prompt feedback from faculty on your performance	HHP	7	36	45	12
	ISU	6	44	41	10
Worked with faculty members on activities other than coursework	HHP	44	37	20	0
	ISU	54	30	12	4

V. INVOLVEMENT WITH OTHER STUDENTS

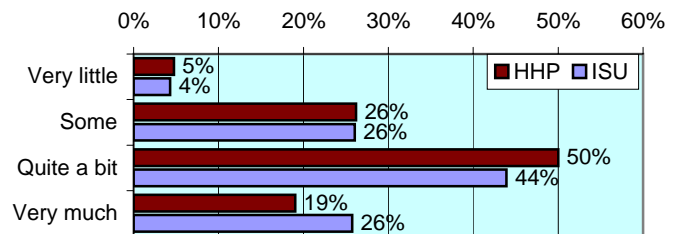
How often have you done each of the following?

Items		Never	Some-times	Often	Very often
Worked with other students on projects during class	HHP	7	43	48	2
	ISU	7	45	38	9
Worked with classmates outside of class to prepare assignments	HHP	5	52	40	2
	ISU	10	52	30	8
Tutored or taught other students (paid or voluntary)	HHP	47	34	17	2
	ISU	57	32	9	3
Discussed ideas from your classes with others outside of class	HHP	12	50	31	7
	ISU	8	42	34	17
Had serious conversations with students of a different race	HHP	17	33	29	21
	ISU	17	38	27	18
Had serious conversations with students who have different personal values from yours	HHP	10	43	26	21
	ISU	12	37	28	23

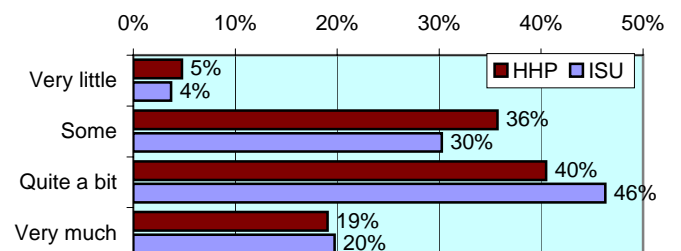
VI. ACADEMIC WORK

How much has your coursework emphasized the following mental activities?

Memorizing facts, ideas or methods from your courses and readings

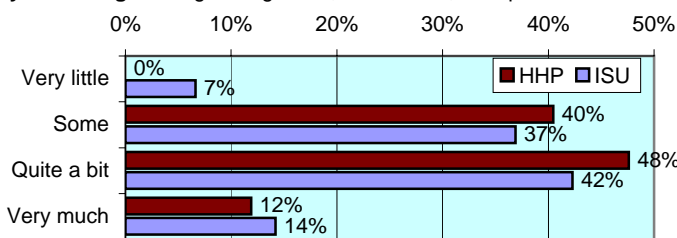


Analyzing the basic elements of an idea, experience or theory

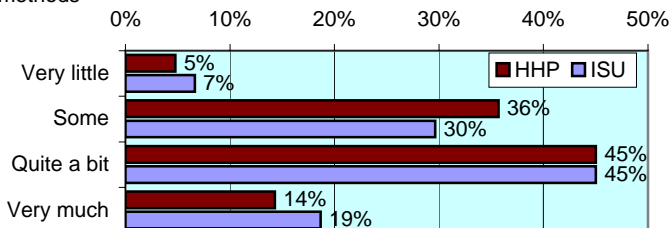


VI. ACADEMIC WORK (continued)

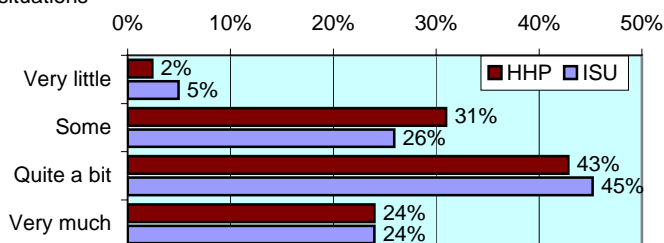
Synthesizing and organizing ideas, information, or experiences



Making judgments about the value of information, arguments, or methods



Applying theories or concepts to practical problems or in new situations



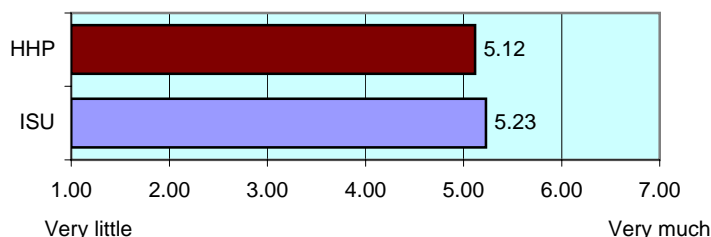
In a typical week, how many homework problem sets do you complete?

Items		None	1-2	3-4	More than 5
Number of problem sets that take you more than an hour to complete	HHP	17	45	31	7
	ISU	15	44	28	13
Number of problem sets that take you less than an hour to complete	HHP	10	36	36	19
	ISU	8	37	32	24

During the current school year, about how often have you done each of the following?

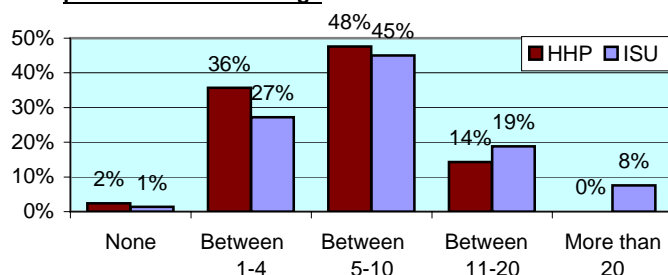
Items		Never	Some-times	Often	Very often
Examined the strengths and weaknesses of your own views on a topic *	HHP	10	60	26	5
	ISU	11	41	35	14
Tried to better understand someone else's views by imagining how an issue looks from his or her perspective	HHP	7	33	43	17
	ISU	5	38	40	17
Learned something that changed the way you understand an issue or concept	HHP	10	29	40	21
	ISU	4	41	38	17

Mark the box that best represents the extent to which your examinations during the current school year have challenged you to do your best work numbers indicate means of 7-point scale

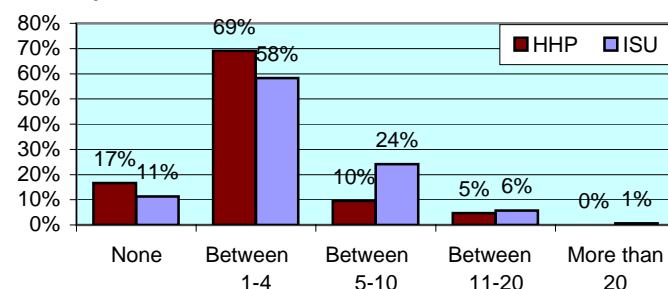


During the current school year, about how much reading and writing have you done?

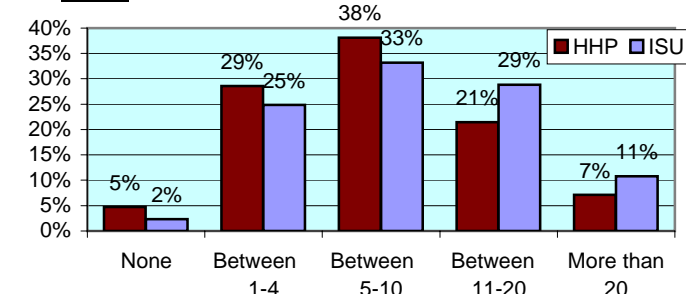
Number of assigned textbooks, books, or book-length packs of course readings *



Number of written papers or reports between 5 and 19 pages *



Number of written papers or reports of fewer than 5 pages



VII. PLANS DURING COLLEGE

Which of the following have you done or do you plan to do before you graduate from your institution?

Item		Not decided	Won't do	Plan to do	Done
Practicum, internship, field experience, co-op experience, or clinical assignment *	HHP	0	2	90	7
	ISU	13	5	76	7
Community service or volunteer work *	HHP	7	5	26	62
	ISU	17	8	36	38
Participate in a learning community *	HHP	24	7	21	48
	ISU	31	17	20	31
Worked on a research project with a faculty member outside of course	HHP	33	19	43	5
	ISU	43	25	26	7
Foreign language coursework	HHP	14	38	21	26
	ISU	17	35	25	24
Study abroad	HHP	26	55	14	5
	ISU	34	40	24	2
Independent study or self-designed major	HHP	31	60	5	5
	ISU	37	47	12	4
Culminating senior experience (thesis, project, etc.)	HHP	48	10	40	2
	ISU	37	14	46	2



Office of Strategic Planning, Institutional Research & Effectiveness

419 Rankin Hall, Tel: 237-2305, Fax: 237-4530

<http://irt2.indstate.edu/home/index.htm>