

Indiana State University

2005 NSSE Freshman Profile: College of Business

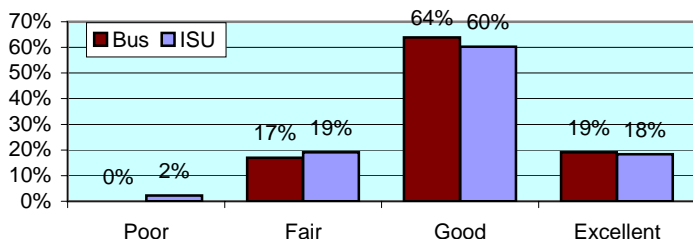
The National Survey of Student Engagement (NSSE) was administered to randomly selected ISU students in Spring 2005. The NSSE survey is designed to examine various aspects of a student's collegiate experience. Of the 705 ISU Freshman students who completed the survey via the internet, 96 were from College of Business. This report presents comparisons between Business students and the rest of respondents. Separate reports including overall NSSE results are available upon request to the ISU campus community.

All numbers in this report are percentages unless otherwise stated.

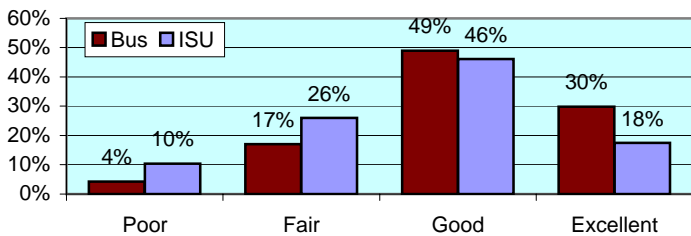
* item was found statistically significant in mean comparison

I. ABOUT INSTITUTION

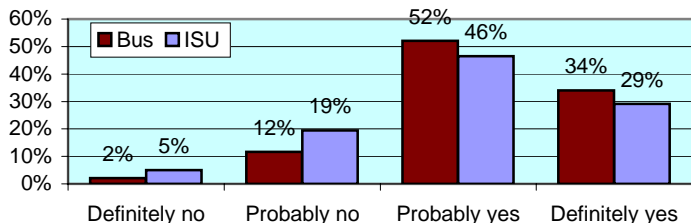
How would you evaluate your entire educational experience at this institution?



Overall, how would you evaluate the quality of academic advising you have received at your institution? *



If you could start over again, would you go to the same institution you are now attending? *

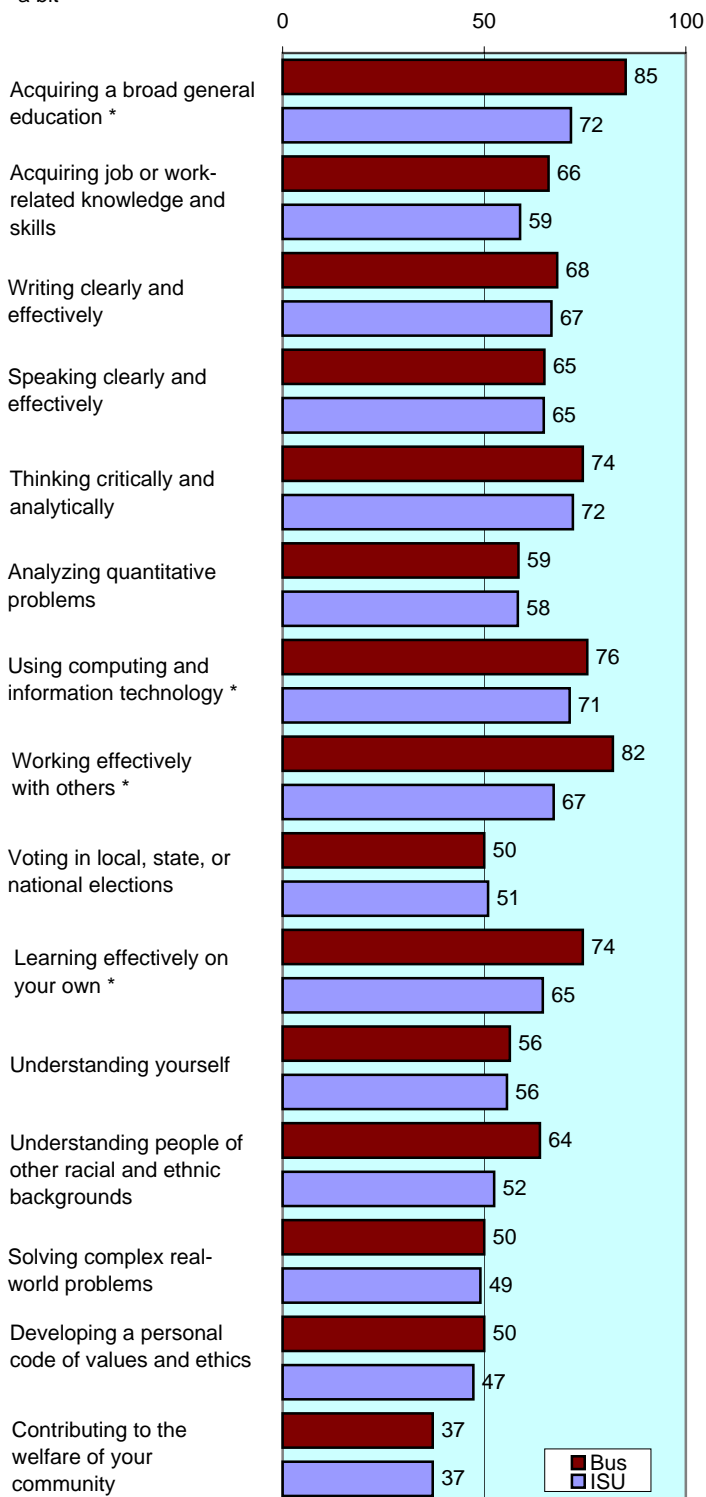


To what extent does your institution emphasize each of the following?

Items		Very little	Some	Quite a bit	Very much
Spending significant amounts of time studying and on academic work	Bus	2	23	56	18
	ISU	3	28	47	22
Providing the support you need to help you succeed academically	Bus	2	37	45	16
	ISU	6	33	48	14
Encouraging contact among students from different racial/ethnic backgrounds	Bus	16	34	32	18
	ISU	18	36	31	15
Helping you cope with your non-academic responsibilities	Bus	38	34	23	4
	ISU	34	39	20	7
Providing the support you need to thrive socially	Bus	18	48	29	5
	ISU	21	44	27	9
Attending campus events and activities (speakers, performances, etc.)	Bus	16	32	30	22
	ISU	11	36	37	16
Using computers in academic work	Bus	3	11	35	51
	ISU	3	16	38	43

To what extent has your experience at this institution contributed to your knowledge, skills, and personal development in the following?

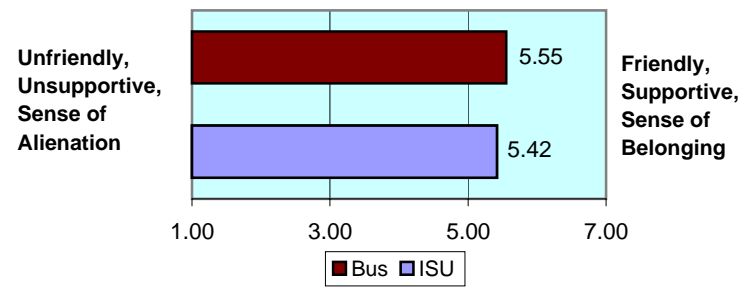
number is combined % who responded either 'very much' or 'quite a bit'



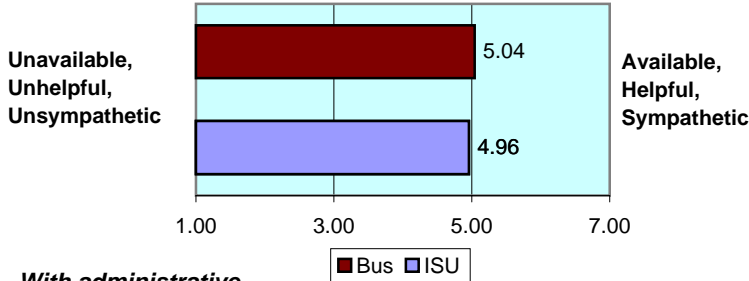
II. ABOUT RELATIONSHIPS

How would you rate your relationships with people at your institution?

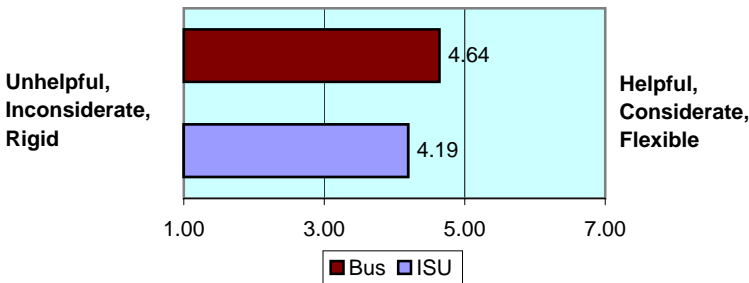
With other students... numbers indicate means of 7-point scale



With faculty members...



*With administrative personnel & offices... **



III. IN CLASSROOM

How often have you done each of the following?

Items		Never	Some-times	Often	Very often
Asked questions in class or contributed to class discussions	Bus	2	46	26	26
	ISU	4	39	40	17
Made a class presentation	Bus	6	51	38	5
	ISU	7	56	31	6
Prepared two or more drafts of a paper or assignment before turning it in	Bus	13	42	28	18
	ISU	13	36	33	17
Worked on a paper that required integrating ideas from various sources *	Bus	3	28	51	18
	ISU	2	22	50	26
Included diverse perspectives in class discussions or assignments	Bus	11	36	39	14
	ISU	7	39	37	16
Came to class without completing readings or assignments *	Bus	25	64	9	2
	ISU	14	60	17	8
Put together ideas from different courses for assignments or class discussions	Bus	6	44	44	6
	ISU	5	47	39	9
Used an electronic medium to discuss or complete an assignment	Bus	19	23	33	25
	ISU	21	30	28	21
Worked harder than you thought you could to meet an instructor's expectations	Bus	4	41	44	11
	ISU	6	43	40	11

IV. INVOLVEMENT WITH FACULTY

How often have you done each of the following?

Items		Never	Some-times	Often	Very often
Used e-mail to communicate with an instructor	Bus	3	20	38	40
	ISU	1	27	40	32
Discussed grades or assignments with an instructor	Bus	5	49	28	18
	ISU	8	44	29	18
Talked about career plans with a faculty member or advisor	Bus	21	58	14	7
	ISU	26	47	19	8
Discussed ideas from your classes with faculty outside of class *	Bus	59	33	4	3
	ISU	46	34	15	5
Received prompt feedback from faculty on your performance	Bus	6	46	38	10
	ISU	6	43	42	10
Worked with faculty members on activities other than coursework	Bus	52	33	11	3
	ISU	54	30	13	3

V. INVOLVEMENT WITH OTHER STUDENTS

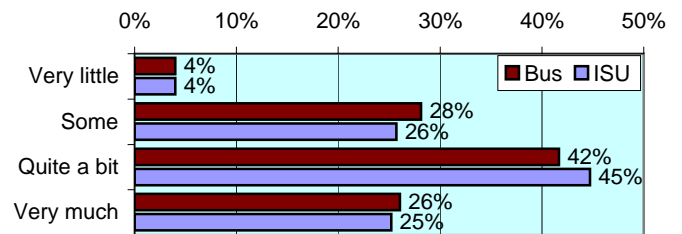
How often have you done each of the following?

Items		Never	Some-times	Often	Very often
Worked with other students on projects during class	Bus	5	49	39	7
	ISU	7	45	39	9
Worked with classmates outside of class to prepare assignments	Bus	7	46	41	6
	ISU	11	53	29	8
Tutored or taught other students (paid or voluntary)	Bus	61	33	5	1
	ISU	55	31	10	3
Discussed ideas from your classes with others outside of class	Bus	7	42	33	18
	ISU	8	43	34	16
Had serious conversations with students of a different race	Bus	19	41	21	20
	ISU	17	37	28	18
Had serious conversations with students who have different personal values from yours	Bus	17	41	22	21
	ISU	11	37	29	23

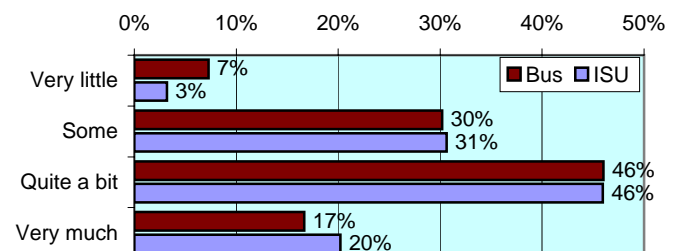
VI. ACADEMIC WORK

How much has your coursework emphasized the following mental activities?

Memorizing facts, ideas or methods from your courses and readings

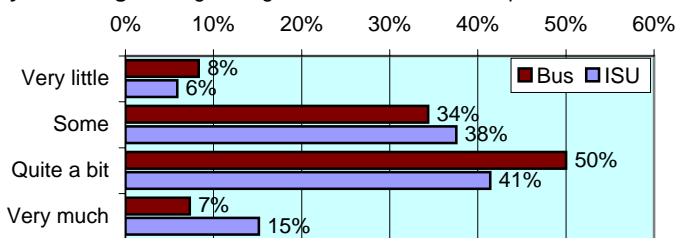


Analyzing the basic elements of an idea, experience or theory

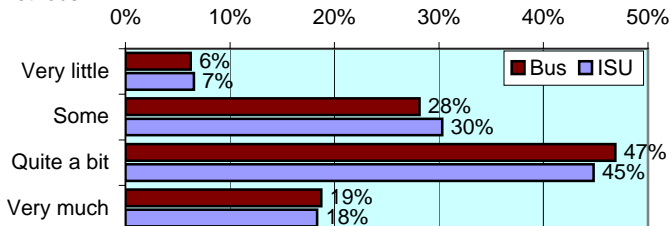


VI. ACADEMIC WORK (continued)

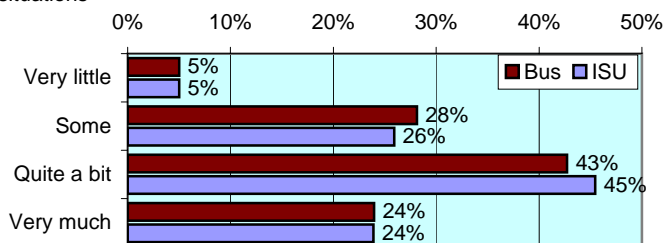
Synthesizing and organizing ideas, information, or experiences



Making judgments about the value of information, arguments, or methods



Applying theories or concepts to practical problems or in new situations



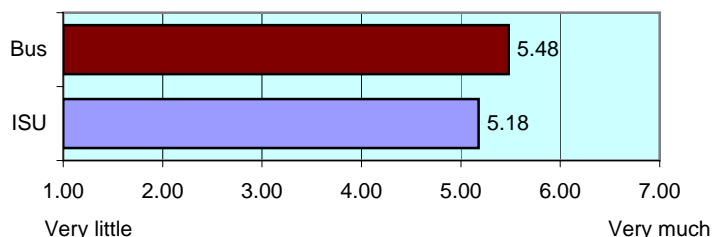
In a typical week, how many homework problem sets do you complete?

Items		None	1-2	3-4	More than 5
Number of problem sets that take you more than an hour to complete *	Bus	6	45	28	21
	ISU	17	44	28	11
Number of problem sets that take you less than an hour to complete *	Bus	2	29	39	30
	ISU	9	38	31	22

During the current school year, about how often have you done each of the following?

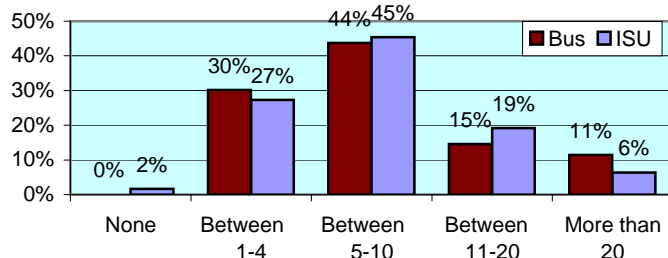
Items		Never	Some-times	Often	Very often
Examined the strengths and weaknesses of your own views on a topic	Bus	11	47	33	10
	ISU	11	41	35	14
Tried to better understand someone else's views by imagining how an issue looks from his or her perspective	Bus	4	40	40	15
	ISU	5	37	40	18
Learned something that changed the way you understand an issue or concept	Bus	4	45	35	16
	ISU	5	39	38	18

Mark the box that best represents the extent to which your examinations during the current school year have challenged you to do your best work * numbers indicate means of 7-point scale

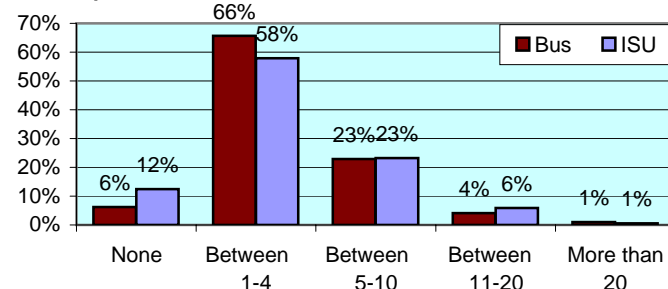


During the current school year, about how much reading and writing have you done?

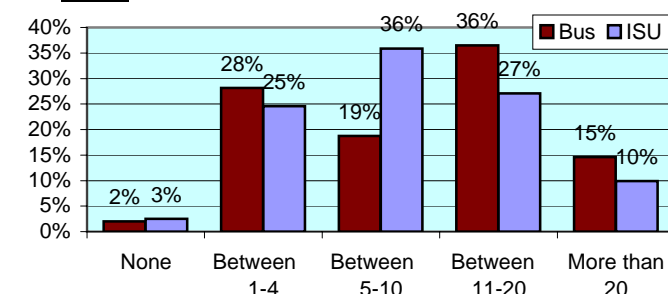
Number of assigned textbooks, books, or book-length packs of course readings



Number of written papers or reports between 5 and 19 pages



Number of written papers or reports of fewer than 5 pages



VII. PLANS DURING COLLEGE

Which of the following have you done or do you plan to do before you graduate from your institution?

Item		Not decided	Won't do	Plan to do	Done
Practicum, internship, field experience, co-op experience, or clinical assignment	Bus	13	2	83	2
	ISU	12	5	76	7
Community service or volunteer work	Bus	21	11	29	39
	ISU	16	8	37	40
Participate in a learning community	Bus	27	15	15	44
	ISU	31	17	21	31
Worked on a research project with a faculty member outside of course	Bus	43	27	29	2
	ISU	42	25	26	7
Foreign language coursework	Bus	14	33	27	27
	ISU	17	35	24	23
Study abroad	Bus	36	38	26	0
	ISU	33	42	23	3
Independent study or self-designed major	Bus	37	49	11	3
	ISU	37	47	12	4
Culminating senior experience (thesis, project, etc.)	Bus	38	15	45	2
	ISU	38	14	46	2



Office of Strategic Planning, Institutional Research & Effectiveness

419 Rankin Hall, Tel: 237-2305, Fax: 237-4530

<http://irt2.indstate.edu/home/index.htm>