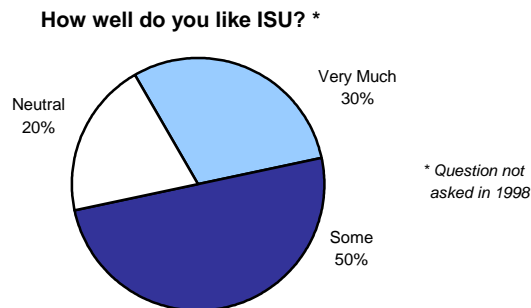
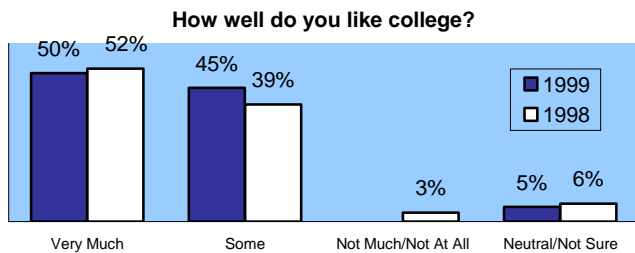


# School of Technology 1999 First Year Profile Freshman Class of Fall 1998

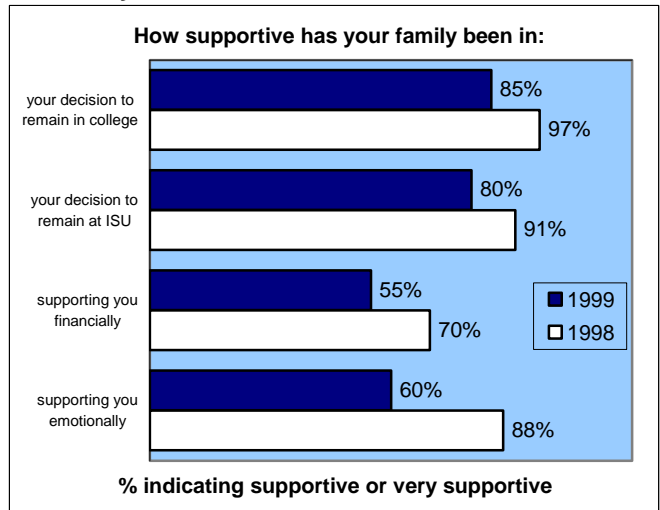
**NOTE: DUE TO SMALL SAMPLE SIZES, SOME STATISTICS MAY NOT BE APPROPRIATE FOR ANALYTICAL PURPOSES.**

The new First Year Experience Survey was administered to Fall 1998 freshmen in late Spring 1999. The questionnaire, which was revised in 1998, is designed to follow up on questions contained in the Student Information Questionnaire (SIQ) administered during NSARP. The purpose of this report is to provide a profile of 1998 freshmen enrolled in School of Technology (S.Tech.) at the end of their freshman year. Technology freshmen represent 5.7% of all 1998 freshmen and 4.1% of the respondent pool (20 responses out of 489 total). These Technology freshmen are also compared to their counterparts in the 1997 freshman class, who completed the survey in spring 1998.

## I. General Satisfaction



## II. Family and Friends



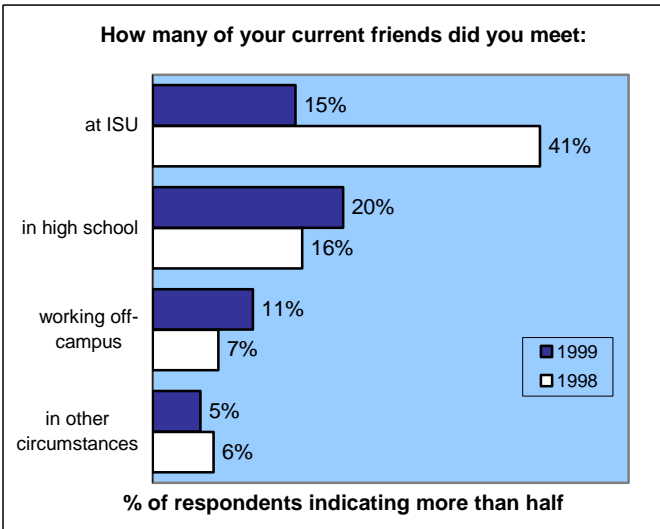
**How often students return to hometown during the semester:**

1999	1998	Description
15%	16%	live in hometown
30%	13%	return every or almost every weekend
30%	50%	return once or twice a month
20%	16%	return once or twice a semester
5%	6%	never return during the semester

**How satisfied are you with Indiana State in regard to:**

	% Satisfied	% Neutral	% Dissatisfied	% Satisfied
				1998
Size of campus	85%	10%	5%	84%
Entire ISU experience	84%	16%	0%	78%
Classroom technologies	80%	15%	5%	94%
Computer facilities	80%	15%	5%	81%
Academic experience	74%	16%	11%	81%
Student Union	74%	26%	0%	59%
Recreational sports	73%	27%	0%	59%
Appearance of campus	70%	15%	15%	91%
Personal safety	70%	30%	0%	63%
Overall safety on campus	65%	25%	10%	66%
Student Counseling Center	57%	43%	0%	22%
Career Center	56%	44%	0%	28%
Registrar's Office	50%	25%	25%	41%
Bookstore	45%	30%	25%	50%
Student Life Office	44%	56%	0%	28%
Bursar's Office	42%	42%	17%	16%
Residential life	38%	38%	25%	48%
Student Health Center	36%	45%	18%	31%
Parking	16%	0%	84%	23%
Financial Aid Office	6%	29%	65%	38%

*Percentages do not reflect those who had never used the service*  
Scale: 1 = Very Satisfied, 5 = Very Dissatisfied

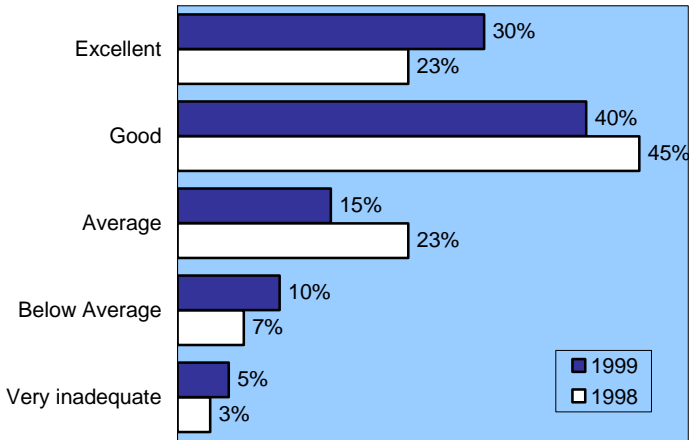


1999	1998	Description
10%	12%	of S.Tech. freshmen said at least half of their high school friends attended ISU last year
37%	65%	said at least half of their high school friends attended another college last year
15%	13%	said at least half of their high school friends did not attend any college last year

Office of Institutional Research & Testing  
419 Rankin Hall, Tel: 237-2305, Fax: 237-4292  
<http://web.indstate.edu/oirt/>

### III. Preparation and Experience

How would you rate your high school education?

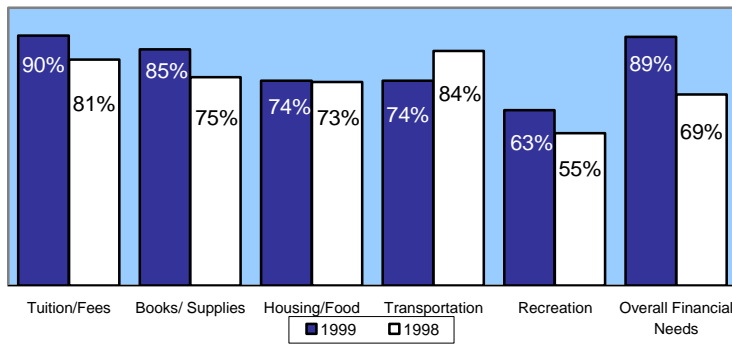


When would you estimate that your parents started saving for your college education?

	% indicating response	
	1999	1998
Before I entered high school	10%	34%
During high school but before my senior year	0%	7%
My senior year in high school or later	0%	21%
They saved, but I don't know when they started	25%	14%
I don't know if they saved	15%	14%
They did not save, but they are contributing	20%	N/A
Doesn't apply; my parents don't/can't contribute	30%	10%

**20% of S.Tech. freshmen said their parents did not save for their college education, but are paying as they go.**

% Indicating Financial Resources were Adequate for Various Needs



Hours Per Week Spent Working During Freshman Year

	None	1-5	6-10	11-15	16-20	21+
<b>Fall Semester (1999 respondents)</b>						
On-campus	71%	24%	0%	6%	0%	0%
Off-campus	61%	6%	11%	6%	6%	11%
Total (On & Off)	41%	24%	12%	12%	0%	12%
<b>Fall Semester (1998 respondents)</b>						
On-campus	85%	0%	11%	0%	4%	0%
Off-campus	68%	6%	0%	0%	6%	19%
Total (On & Off)	70%	N/A	N/A	N/A	N/A	N/A
<b>Spring Semester (1999 respondents)</b>						
On-campus	53%	6%	12%	12%	12%	6%
Off-campus	72%	6%	0%	6%	6%	11%
Total (On & Off)	47%	6%	6%	6%	6%	29%
<b>Spring Semester (1998 respondents)</b>						
On-campus	86%	4%	7%	0%	4%	0%
Off-campus	60%	10%	0%	3%	10%	17%
Total (On & Off)	61%	N/A	N/A	N/A	N/A	N/A

In which area were you most unable to meet your financial needs?

I was able to meet all	31%	Housing/Food	0%
Tuition/fees	25%	Transportation	6%
Books/supplies	19%	Recreation	19%

**Almost 70% of S.Tech. freshmen spent 10 or fewer hours per week studying, which is up from 63% in 1998.**

**At least 5% of S.Tech. freshmen spent more than 35 hours per week socializing, which is down from 16% in 1998.\***

Hours Spent Per Week During First Year of College

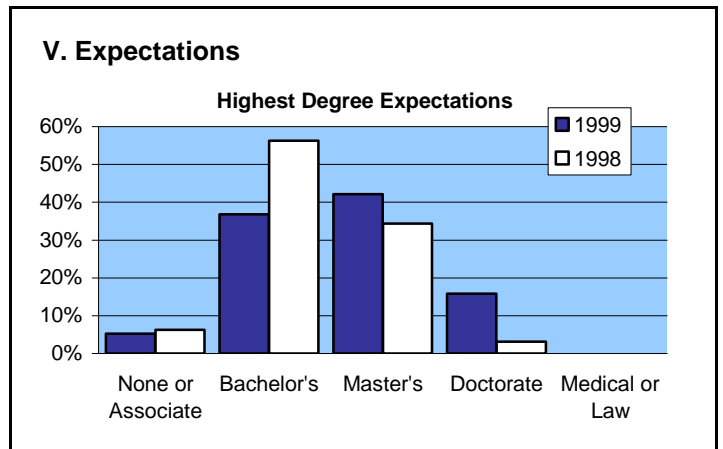
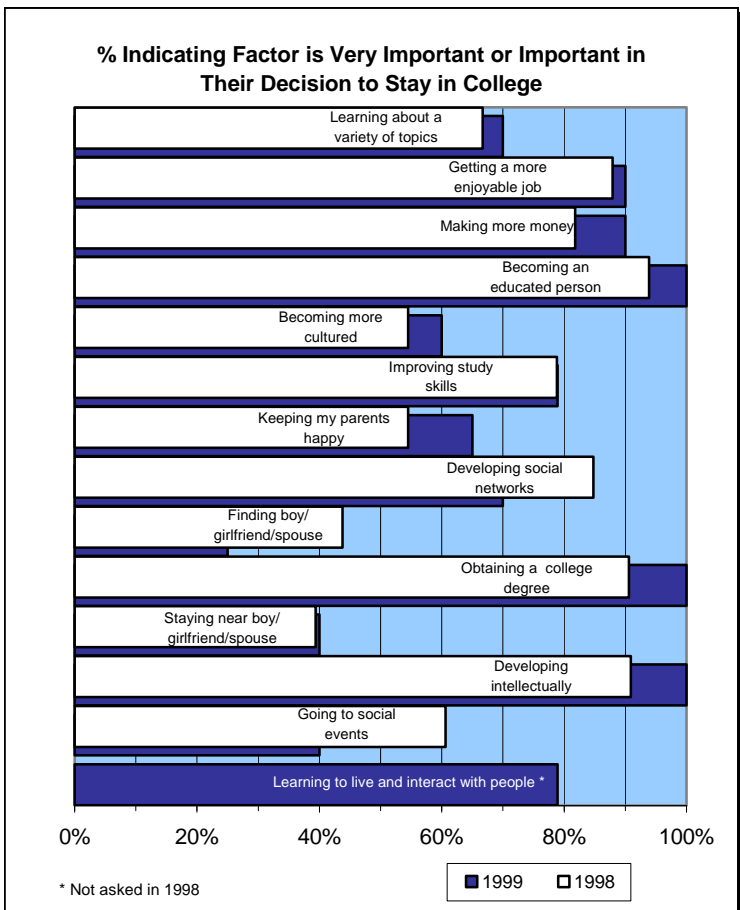
	None	1-5	6-10	11-15	16-20	21-25	26-30	31-35	36+	% None 1998	% 1-20 1998	% 21+ 1998
Studying, researching, using library	0%	25%	45%	20%	5%	0%	0%	0%	5%	0%	82%	18%
Meeting study groups	40%	60%	0%	0%	0%	0%	0%	0%	0%	30%	67%	3%
Meeting with professors	50%	50%	0%	0%	0%	0%	0%	0%	0%	39%	61%	0%
At campus recreational events	32%	53%	11%	5%	0%	0%	0%	0%	0%	18%	79%	3%
At campus cultural events	63%	37%	0%	0%	0%	0%	0%	0%	0%	N/A	N/A	N/A
At fraternity/sorority events	74%	16%	5%	5%	0%	0%	0%	0%	0%	64%	30%	6%
Participating in other ISU organizations	61%	33%	6%	0%	0%	0%	0%	0%	0%	34%	59%	6%
Participating in sports or exercising	28%	44%	22%	6%	0%	0%	0%	0%	0%	9%	88%	3%
Socializing in person with ISU friends	11%	32%	16%	16%	5%	0%	5%	11%	5%	3%	79%	18%
Socializing in person with non-ISU friends	37%	53%	0%	11%	0%	0%	0%	0%	0%	16%	75%	9%
Socializing in person w/ either type of friends	21%	26%	16%	5%	11%	11%	0%	11%	0%		at least	18%
Socializing phone,internet,email - ISU friends	32%	58%	5%	5%	0%	0%	0%	0%	0%	N/A	N/A	N/A
Socializing phone,internet,email - others	21%	47%	11%	16%	0%	5%	0%	0%	0%	N/A	N/A	N/A
Engaged in computer or internet recreation	24%	65%	6%	6%	0%	0%	0%	0%	0%	N/A	N/A	N/A
Playing video games or watching TV	11%	47%	16%	11%	5%	0%	0%	0%	11%	N/A	N/A	N/A
Participating in community activities	42%	58%	0%	0%	0%	0%	0%	0%	0%	64%	33%	3%

\* It is believed that students misunderstood the question regarding time spent "socializing in person with friends of either type" which was first used in 1999. Only 0% indicated 36+ hours, but since 5% indicated 36+ hours socializing in person with ISU friends, at least 5% would need to spend that socializing with friends of either type.

#### IV. Skills

How much has your college experience helped you develop your ability to:				Very Much/ A Lot 1998
	Very Much/ A Lot	Some	Not a Lot/ Not at All	
Get along with others	50%	35%	15%	73%
Think critically	40%	45%	15%	70%
Respect views of others	50%	40%	10%	55%
Develop close relationships with others	45%	30%	25%	64%
Be sensitive to the feelings of others	30%	55%	15%	58%
Be independent	80%	15%	5%	76%
Choose moral and ethical behavior	42%	42%	16%	61%
Establish your identity	60%	30%	10%	61%
Develop social skills	50%	35%	15%	76%
Develop a meaningful philosophy of life	53%	26%	21%	39%
Develop leadership skills	45%	40%	15%	52%
Handle stress	35%	35%	30%	53%
Understand and appreciate other cultures	50%	40%	10%	64%
Develop expertise in a given subject area	58%	37%	5%	70%
Communicate effectively	55%	30%	15%	67%

How would you rate your ability to:				Very Good/ Good 1998
	Very Good/ Good	Average	Not Very/ Not Good	
Lead a group discussion	60%	35%	5%	50%
Solve problems creatively	80%	15%	5%	69%
Make well informed decisions	75%	15%	10%	84%
Spend leisure time wisely	47%	32%	21%	53%
Express yourself in oral communication	55%	30%	15%	63%
Express yourself in writing	60%	25%	15%	50%
Solve an algebra problem	65%	25%	10%	63%
Use computers for schoolwork	74%	16%	11%	78%
Intelligently discuss national politics	35%	35%	30%	22%
Intelligently discuss world events	35%	40%	25%	26%
Find info on the World Wide Web	75%	15%	10%	75%
Using library resources to get info	60%	20%	20%	56%
Work with others on projects	65%	30%	5%	66%

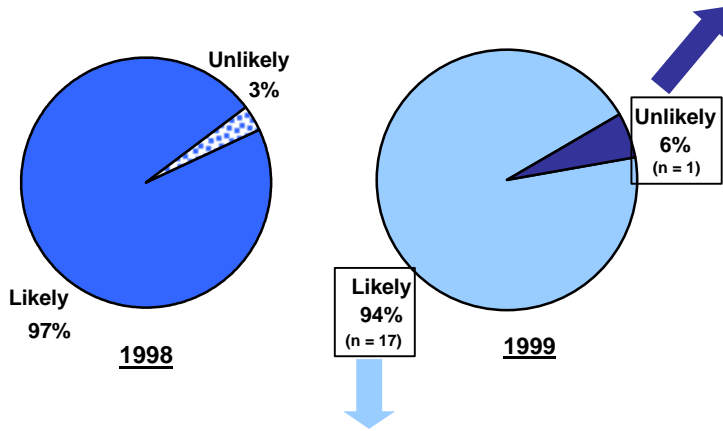


**What are the Chances of the Following Things Happening to You During Your Educational Career?**

	1999 Tech respondents			1998 Tech respondents		
	Already Happened	Good/Some Chance	Little/No Chance	Already Happened	Good/Some Chance	Little/No Chance
Join a fraternity/sorority	11%	26%	63%	24%	30%	45%
Fail a class	5%	10%	85%	15%	33%	52%
Get tutoring help	10%	55%	35%	19%	63%	19%
Need extra time to complete a degree	5%	70%	25%	0%	90%	10%
Graduate with honors	0%	70%	30%	0%	67%	33%
Change your major	15%	25%	60%	9%	21%	70%
Transfer from ISU	0%	32%	68%	3%	31%	66%
Drop out permanently	0%	5%	95%	0%	21%	79%
Be satisfied with your college	0%	89%	11%	6%	91%	3%
Be gainfully employed during the school year	26%	53%	21%	12%	67%	21%

## VI. Future Academic Plans

Likelihood of Returning in Fall



The 17 S.Tech. students who were likely to return to ISU in the fall were asked about their decision to stay.

Importance of Factors Affecting Decision to Stay at ISU	Essential/			Essential
	Very	Fairly	Not Very/	or Very
	1998	1998	1998	1998
Financial aid available	47%	24%	29%	57%
Low cost	76%	12%	12%	46%
Close to home	41%	12%	47%	32%
Far away from home	12%	12%	76%	18%
Appearance of campus	12%	65%	24%	25%
ISU's academic reputation	59%	35%	6%	57%
Academic reputation of my major department	76%	18%	6%	82%
Quality of faculty	71%	29%	0%	61%
Size of campus	47%	35%	18%	57%
Campus social life	47%	29%	24%	46%
Student activities	18%	47%	35%	36%
Class size	59%	41%	0%	57%
Computing facilities	65%	35%	0%	50%
Opportunities to interact with faculty in class	41%	59%	0%	46%
Opportunities to interact with faculty out of class	24%	65%	12%	39%
Life in residence halls	18%	29%	53%	32%
Family pressure to stay	6%	29%	65%	25%
Friendships with faculty	0%	65%	35%	25%
Friendships with staff	6%	65%	29%	25%
Friendships with students	59%	29%	12%	54%
Terre Haute community	6%	53%	41%	21%

*% shown are % of the 17 students likely to return*

### MOST IMPORTANT FACTOR IN DECISION TO STAY AT ISU

	1999	1998
<b>LOW COST</b>	31%	20%
<b>ACADEMIC REPUTATION OF DEPARTMENT</b>	25%	60%
<b>FINANCIAL AID AVAILABLE</b>	13%	0%
<b>FRIENDSHIPS WITH STUDENTS</b>	13%	0%
<b>CLOSE TO HOME</b>	6%	0%

*% of the 16 (out of 17 likely to return) who responded*

The 1 S.Tech. student who was unlikely to return to ISU in the fall was asked about his decision to leave.

### Importance of Factors Affecting Decision to Leave ISU

Importance of Factors Affecting Decision to Leave ISU	Not Essential			Essential
	Essential/Very	Fairly	Very/Not at All	or Very 1998
Not enough financial aid	100%	0%	0%	100%
Cost too high	100%	0%	0%	100%
Too close to home	0%	0%	100%	100%
Too far away from home	0%	0%	100%	100%
Campus atmosphere	100%	0%	0%	100%
ISU's academic reputation	0%	0%	100%	100%
Academic reputation of my major department	0%	0%	100%	100%
Quality of faculty	0%	0%	100%	100%
Size of campus	0%	0%	100%	100%
Lack of campus social life	0%	0%	100%	100%
Lack of student activities	0%	0%	100%	100%
Class size too small	0%	0%	100%	100%
Too easy	0%	0%	100%	100%
Too difficult	0%	0%	100%	100%
Personal issues	0%	0%	100%	100%
Life in residence halls	0%	0%	100%	100%
Family pressure to quit	0%	0%	100%	100%
Lack of interaction with faculty	0%	0%	100%	100%
Lack of interaction with staff	0%	0%	100%	100%
Lack of interaction w/ students	0%	100%	0%	100%
Terre Haute community	0%	100%	0%	100%

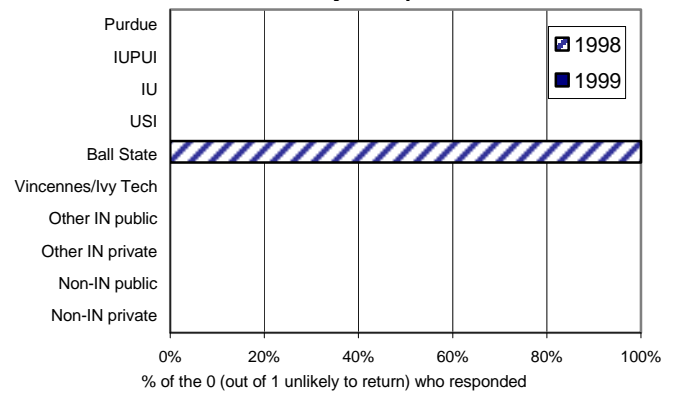
*% shown are % of the 1 student unlikely to return*

### MOST IMPORTANT FACTOR IN DECISION TO LEAVE ISU

	1999	1998
<b>COST TOO HIGH</b>	100%	0%
<b>NOT ENOUGH FINANCIAL AID</b>	0%	0%
<b>TOO CLOSE TO HOME</b>	0%	0%

*% of the 1 (out of 1 unlikely to return) who responded*

### Where do you hope to transfer to?



### Reasons for not returning to higher education

	1999	1998
Decided school isn't for me	0%	0%
Need or want to work	0%	0%
Family responsibilities	0%	0%
Health reasons	0%	0%
Benefits not worth the cost	0%	0%
Too difficult	0%	0%
Was not learning much	0%	0%
Cannot afford it	0%	0%
Other	0%	0%

*% of the 1 (out of 1 unlikely to return) who responded (multiple responses allowed)*