

Indiana State University

2003 Senior Year Profile: NSSE Edition

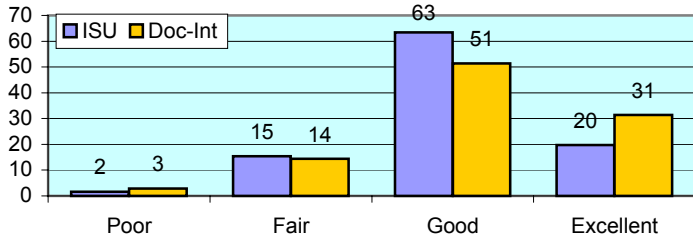
Senior Class of 2002

The National Survey of Student Engagement (NSSE) was administered to randomly selected Fall 2002 seniors in Spring 2003. The NSSE survey is designed to examine various aspects of a student's collegiate experience. Of the 700 seniors given the opportunity to participate, 256 students completed the survey via the internet, for a response rate of 36.6%. In addition to the results compiled for ISU students, this report includes the NSSE results of senior students enrolled at other doctoral institutions, which facilitates comparison with institutions similar to ISU.

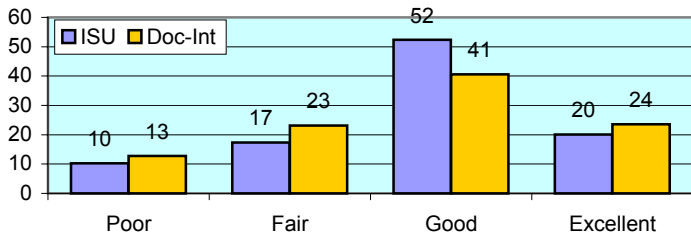
All numbers in this report are percentages unless otherwise stated.

I. ABOUT THE INSTITUTION

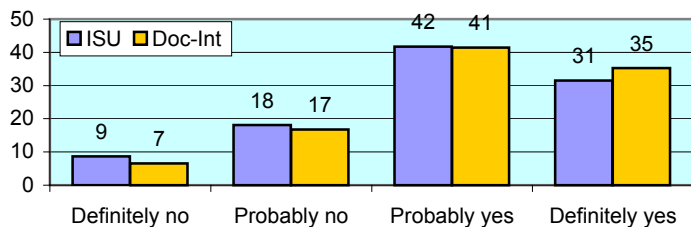
How would you evaluate your entire educational experience at this institution?



Overall, how would you evaluate the quality of academic advising you have received at your institution?



If you could start over again, would you go to the same institution you are now attending?

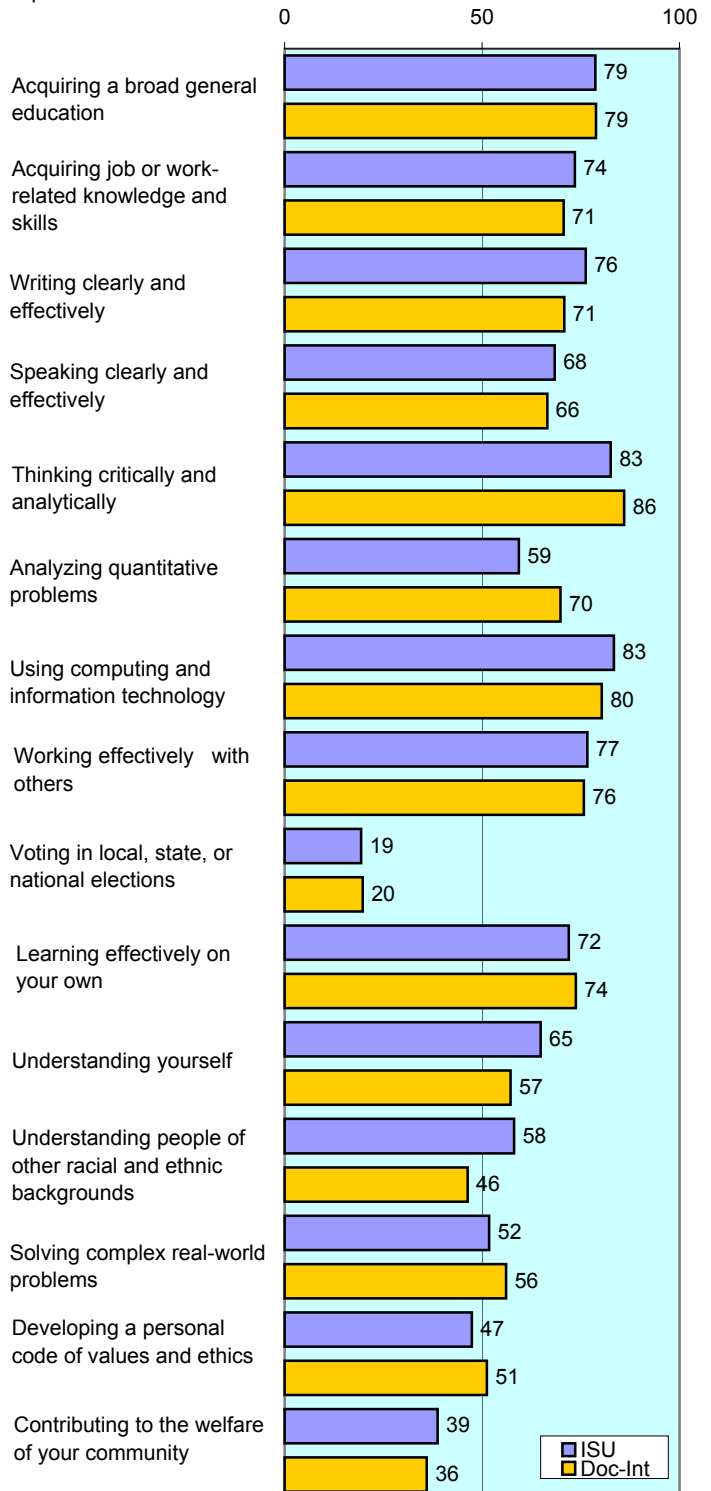


To what extent does your institution emphasize each of the following?

Items		Very little	Some	Quite a bit	Very much
Spending significant amounts of time studying and on academic work	ISU	3	27	51	19
	Doc-Int	3	19	44	34
Providing the support you need to help you succeed academically	ISU	5	30	47	17
	Doc-Int	6	30	43	21
Encouraging contact among students from different racial/ethnic backgrounds	ISU	20	42	26	11
	Doc-Int	23	38	25	14
Helping you cope with your non-academic responsibilities	ISU	46	35	12	7
	Doc-Int	46	36	13	5
Providing the support you need to thrive socially	ISU	28	46	21	6
	Doc-Int	33	41	20	6
Attending campus events and activities (speakers, performances, etc.)	ISU	15	39	36	11
	Doc-Int	18	38	31	13
Using computers in academic work	ISU	2	7	32	59
	Doc-Int	2	10	30	59

To what extent has your experience at this institution contributed to your knowledge, skills, and personal development in the following?

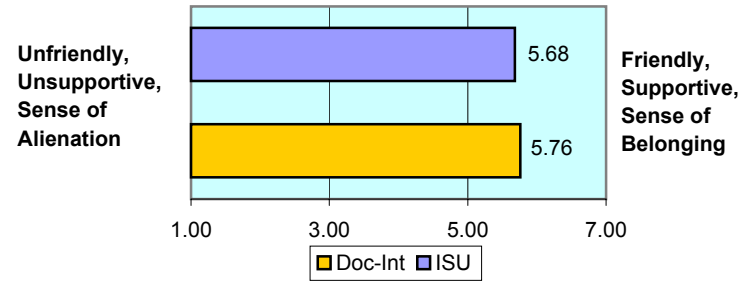
number is combined % who responded either 'very much' or 'quite a bit'



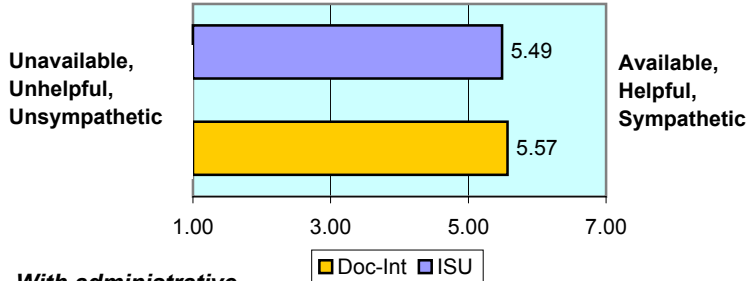
II. ABOUT RELATIONSHIPS

How would you rate your relationships with people at your institution?

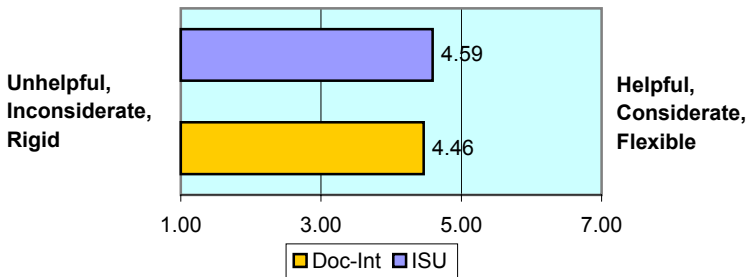
With other students... numbers indicate means of 7-point scale



With faculty members...



With administrative personnel & offices...



III. IN THE CLASSROOM

How often have you done each of the following?

Items		Never	Some- times	Often	Very often
Asked questions in class or contributed to class discussions	ISU	2	20	35	43
	Doc-Int	2	30	33	34
Made a class presentation	ISU	6	34	36	23
	Doc-Int	5	34	37	24
Prepared two or more drafts of a paper or assignment before turning it in	ISU	19	35	26	20
	Doc-Int	15	38	28	20
Worked on a paper that required integrating ideas from various sources	ISU	2	15	45	38
	Doc-Int	1	14	40	45
Included diverse perspectives in class discussions or assignments	ISU	9	35	38	18
	Doc-Int	11	37	31	21
Came to class without completing readings or assignments	ISU	23	55	18	4
	Doc-Int	19	60	14	6
Put together ideas from different courses for assignments or class discussions	ISU	5	39	37	20
	Doc-Int	4	32	42	23
Participated in a community-based project as part of a regular course	ISU	53	31	9	8
	Doc-Int	59	29	9	4
Used an electronic medium to discuss or complete an assignment	ISU	12	26	33	29
	Doc-Int	11	28	28	34
Worked harder than you thought you could to meet an instructor's expectations	ISU	6	46	35	13
	Doc-Int	6	37	38	18

IV. INVOLVEMENT WITH FACULTY

How often have you done each of the following?

Items		Never	Some- times	Often	Very often
Used e-mail to communicate with an instructor	ISU	2	22	33	43
	Doc-Int	2	21	31	45
Discussed grades or assignments with an instructor	ISU	4	36	36	25
	Doc-Int	5	36	35	25
Talked about career plans with a faculty member or advisor	ISU	10	45	27	17
	Doc-Int	20	43	23	15
Discussed ideas from your classes with faculty outside of class	ISU	25	53	14	8
	Doc-Int	29	47	18	7
Received prompt feedback from faculty on your performance	ISU	5	36	44	16
	Doc-Int	6	33	43	18
Worked with faculty members on activities other than coursework	ISU	45	32	13	9
	Doc-Int	51	30	13	6

V. INVOLVEMENT WITH OTHER STUDENTS

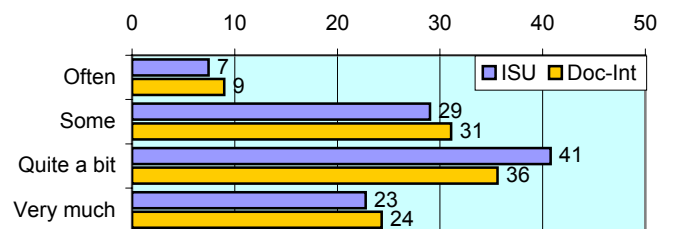
How often have you done each of the following?

Items		Never	Some- times	Often	Very often
Worked with other students on projects during class	ISU	11	40	36	13
	Doc-Int	11	45	31	13
Worked with classmates outside of class to prepare assignments	ISU	9	40	34	17
	Doc-Int	7	33	34	27
Tutored or taught other students (paid or voluntary)	ISU	46	30	14	11
	Doc-Int	43	35	13	9
Discussed ideas from your classes with others outside of class	ISU	5	38	36	21
	Doc-Int	5	34	38	24
Had serious conversations with students of a different race	ISU	14	40	24	22
	Doc-Int	14	36	26	24
Had serious conversations with students who have different personal values from yours	ISU	11	43	22	24
	Doc-Int	12	35	29	24

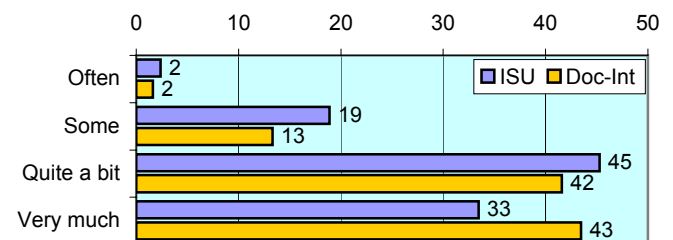
VI. ACADEMIC WORK

How much has your coursework emphasized the following mental activities?

Memorizing facts, ideas or methods from your courses and readings

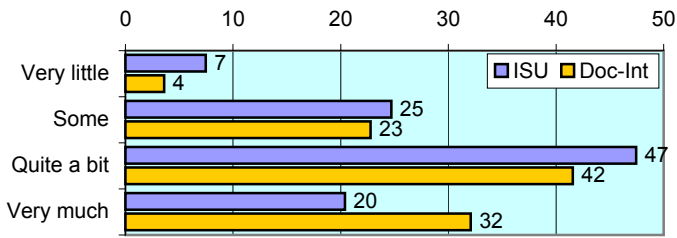


Analyzing the basic elements of an idea, experience or theory

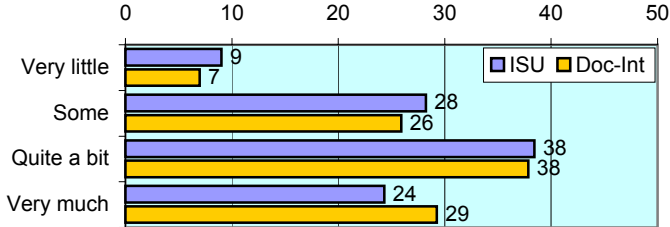


VI. ACADEMIC WORK (continued)

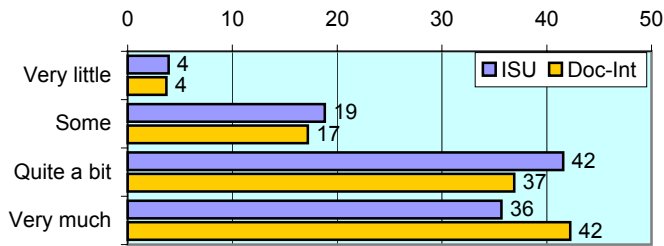
Synthesizing and organizing ideas, information, or experiences



Making judgments about the value of information, arguments, or methods



Applying theories or concepts to practical problems or in new situations



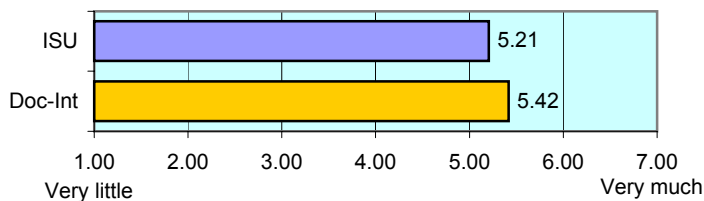
In a typical week, how many homework problem sets do you complete?

Items		None	1-2	3-4	More than 5
Number of problem sets that take you more than an hour to complete	ISU	26	38	20	15
	Doc-Int	21	33	27	18
Number of problem sets that take you less than an hour to complete	ISU	22	34	24	20
	Doc-Int	31	36	18	14

In a typical week, how many homework problem sets take you more than 15 minutes each to complete?

Items		None	1-3	4-6	More than 7
In a typical week, how many homework problems take you more than 15 minutes each to complete?	ISU	17	33	29	21
	Doc-Int	18	28	28	26

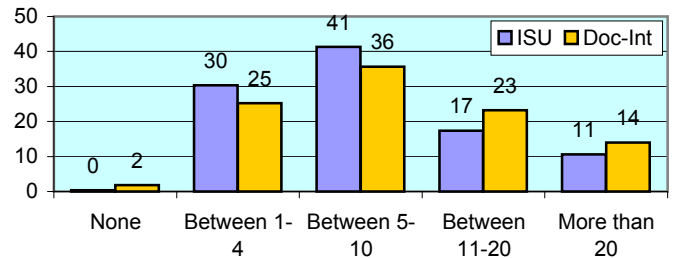
Mark the box that best represents the extent to which your examinations during the current school year have challenged you to do your best work numbers indicate means of 7-point scale



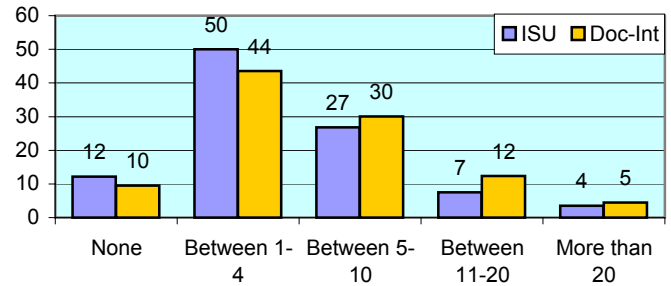
Office of Strategic Planning, Institutional Research & Effectiveness
419 Rankin Hall, Tel: 237-2305, Fax: 237-4530
<http://irt2.indstate.edu/home/index.htm>

During the current school year, about how much reading and writing have you done?

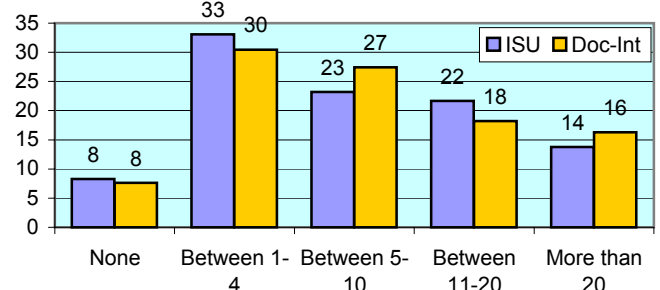
Number of assigned textbooks, books, or book-length packs of course readings



Number of written papers or reports between 5 and 19 pages



Number of written papers or reports of fewer than 5 pages



V. PLANS DURING COLLEGE

Which of the following have you done or do you plan to do before you graduate from your institution?

Item		Undecided	No	Yes
Practicum, internship, field experience, co-op experience, or clinical assignment	ISU	6	14	80
	Doc-Int	7	22	71
Community service or volunteer work	ISU	11	26	63
	Doc-Int	11	29	60
Participate in a learning community where groups take 2+ classes together	ISU	13	55	32
	Doc-Int	12	63	25
Worked on a research project with a faculty member outside of course	ISU	10	63	26
	Doc-Int	14	60	26
Foreign language coursework	ISU	9	65	25
	Doc-Int	8	58	35
Study abroad	ISU	5	85	10
	Doc-Int	9	76	15
Independent study or self-designed major	ISU	5	66	29
	Doc-Int	9	66	25
Culminating senior experience (thesis, project, etc.)	ISU	9	42	49
	Doc-Int	10	32	58