

# Indiana State University

## 2003 First Year Profile: NSSE Edition

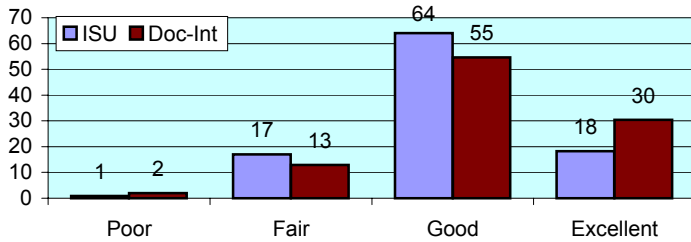
### Freshman Class of 2002

The National Survey of Student Engagement (NSSE) was administered to randomly selected Fall 2002 freshmen in Spring 2003. The NSSE survey is designed to examine various aspects of a student's collegiate experience. Of the 700 freshmen given the opportunity to participate, 238 students completed the survey via the internet, for a response rate of 34%. In addition to the results compiled for ISU students, this report includes the NSSE results of freshman students enrolled at other doctoral institutions, which facilitates comparison with institutions similar to ISU.

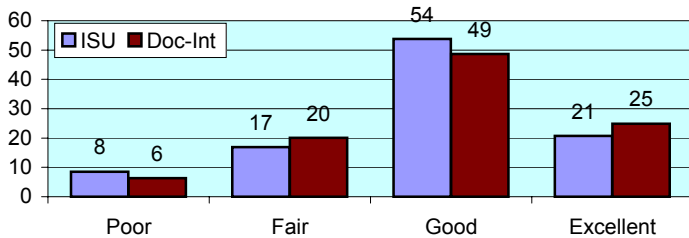
**All numbers in this report are percentages unless otherwise stated.**

### I. ABOUT THE INSTITUTION

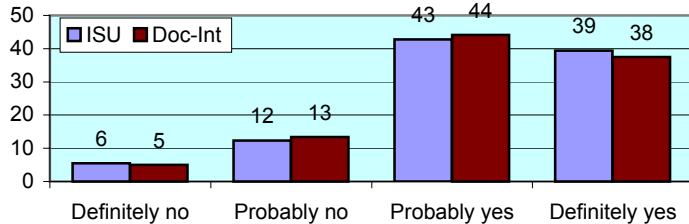
**How would you evaluate your entire educational experience at this institution?**



**Overall, how would you evaluate the quality of academic advising you have received at your institution?**



**If you could start over again, would you go to the same institution you are now attending?**

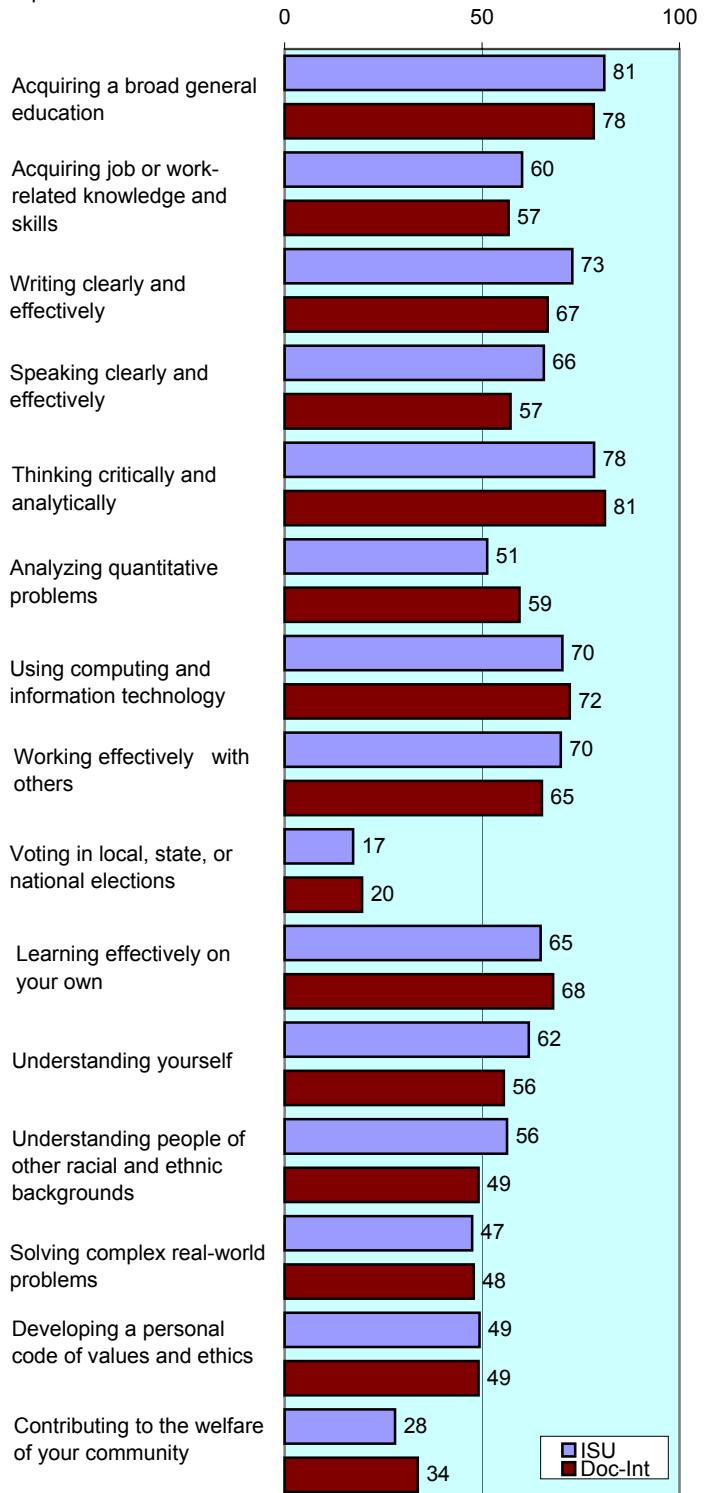


**To what extent does your institution emphasize each of the following?**

Items		Very little	Some	Quite a bit	Very much
Spending significant amounts of time studying and on academic work	ISU	3	25	44	28
	Doc-Int	2	17	45	36
Providing the support you need to help you succeed academically	ISU	3	28	42	28
	Doc-Int	3	24	45	27
Encouraging contact among students from different racial/ethnic backgrounds	ISU	12	34	33	20
	Doc-Int	15	35	30	19
Helping you cope with your non-academic responsibilities	ISU	26	38	25	11
	Doc-Int	33	41	19	7
Providing the support you need to thrive socially	ISU	15	42	31	11
	Doc-Int	22	43	26	8
Attending campus events and activities (speakers, performances, etc.)	ISU	8	32	44	16
	Doc-Int	11	32	38	19
Using computers in academic work	ISU	1	12	39	48
	Doc-Int	2	11	33	54

**To what extent has your experience at this institution contributed to your knowledge, skills, and personal development in the following?**

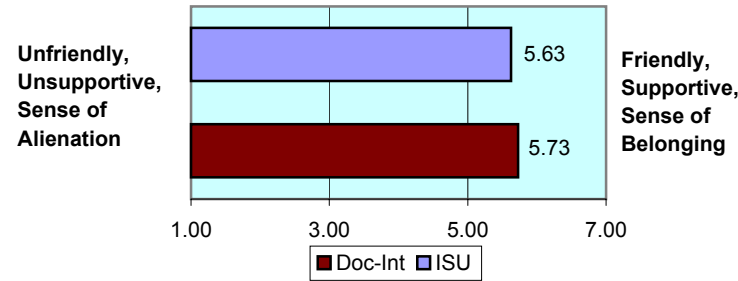
number is combined % who responded either 'very much' or 'quite a bit'



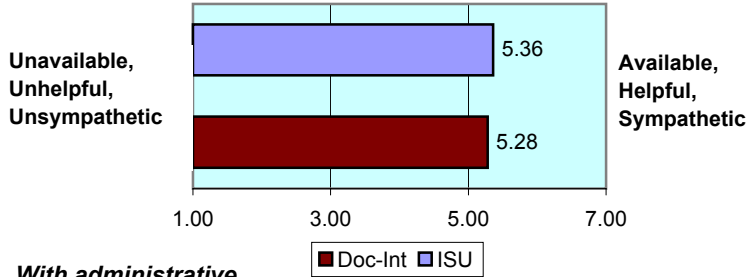
## II. ABOUT RELATIONSHIPS

How would you rate your relationships with people at your institution?

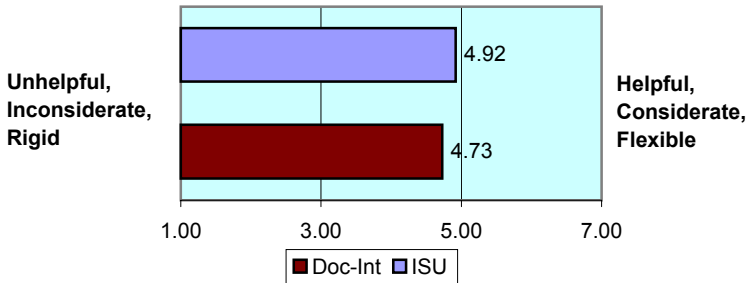
*With other students...* numbers indicate means of 7-point scale



*With faculty members...*



*With administrative personnel & offices...*



## III. IN THE CLASSROOM

How often have you done each of the following?

Items		Never	Some-times	Often	Very often
Asked questions in class or contributed to class discussions	ISU	3	39	36	22
	Doc-Int	4	41	33	21
Made a class presentation	ISU	6	55	29	10
	Doc-Int	13	55	24	8
Prepared two or more drafts of a paper or assignment before turning it in	ISU	12	39	31	18
	Doc-Int	14	31	31	25
Worked on a paper that required integrating ideas from various sources	ISU	3	16	58	23
	Doc-Int	2	22	43	32
Included diverse perspectives in class discussions or assignments	ISU	4	43	37	17
	Doc-Int	8	35	36	20
Came to class without completing readings or assignments	ISU	18	58	15	9
	Doc-Int	20	61	14	5
Put together ideas from different courses for assignments or class discussions	ISU	7	47	38	8
	Doc-Int	9	46	34	11
Participated in a community-based project as part of a regular course	ISU	58	32	8	2
	Doc-Int	69	22	7	3
Used an electronic medium to discuss or complete an assignment	ISU	20	36	25	18
	Doc-Int	15	28	28	29
Worked harder than you thought you could to meet an instructor's expectations	ISU	10	45	36	8
	Doc-Int	9	41	35	15

## IV. INVOLVEMENT WITH FACULTY

How often have you done each of the following?

Items		Never	Some-times	Often	Very often
Used e-mail to communicate with an instructor	ISU	3	28	41	29
	Doc-Int	3	29	34	34
Discussed grades or assignments with an instructor	ISU	8	40	37	15
	Doc-Int	8	46	30	16
Talked about career plans with a faculty member or advisor	ISU	26	45	22	7
	Doc-Int	27	47	19	8
Discussed ideas from your classes with faculty outside of class	ISU	43	42	12	4
	Doc-Int	45	40	11	4
Received prompt feedback from faculty on your performance	ISU	7	47	38	8
	Doc-Int	9	41	38	13
Worked with faculty members on activities other than coursework	ISU	59	25	14	2
	Doc-Int	65	24	7	4

## V. INVOLVEMENT WITH OTHER STUDENTS

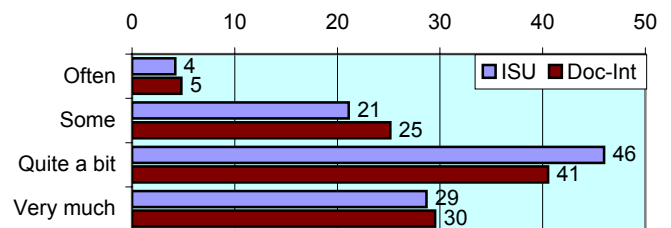
How often have you done each of the following?

Items		Never	Some-times	Often	Very often
Worked with other students on projects during class	ISU	8	45	38	9
	Doc-Int	12	49	29	9
Worked with classmates outside of class to prepare assignments	ISU	8	55	29	7
	Doc-Int	12	47	29	12
Tutored or taught other students (paid or voluntary)	ISU	57	33	7	3
	Doc-Int	49	35	11	5
Discussed ideas from your classes with others outside of class	ISU	8	43	32	17
	Doc-Int	8	39	34	19
Had serious conversations with students of a different race	ISU	15	36	28	21
	Doc-Int	16	32	26	25
Had serious conversations with students who have different personal values from yours	ISU	12	35	30	23
	Doc-Int	11	32	29	28

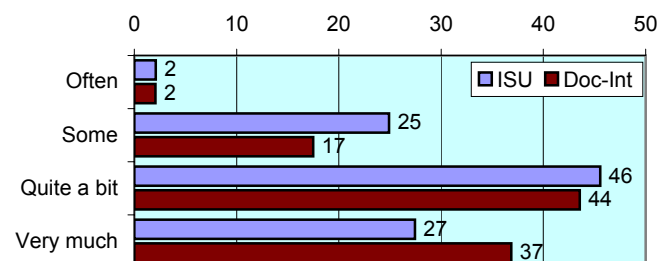
## VI. ACADEMIC WORK

How much has your coursework emphasized the following mental activities?

**Memorizing** facts, ideas or methods from your courses and readings

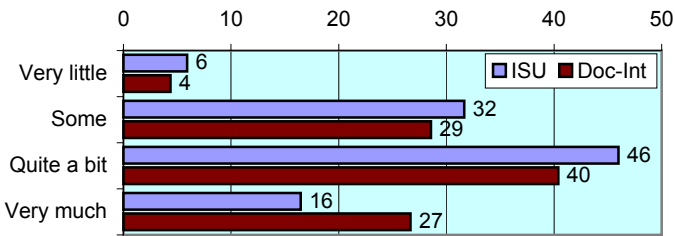


**Analyzing** the basic elements of an idea, experience or theory

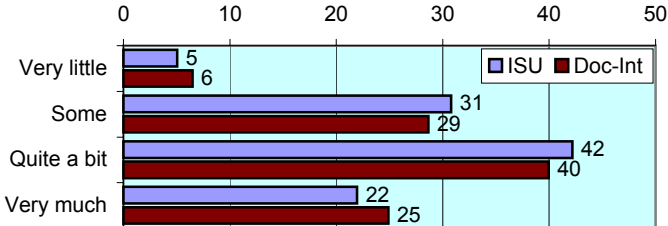


## VI. ACADEMIC WORK (continued)

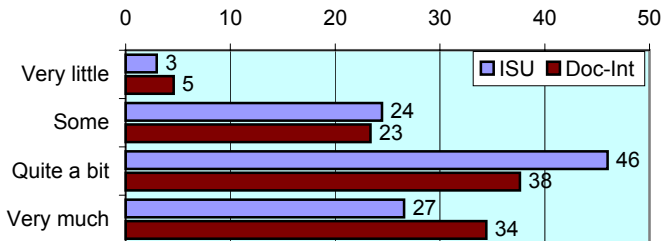
**Synthesizing** and organizing ideas, information, or experiences



**Making judgments** about the value of information, arguments, or methods



**Applying** theories or concepts to practical problems or in new situations



**In a typical week, how many homework problem sets do you complete?**

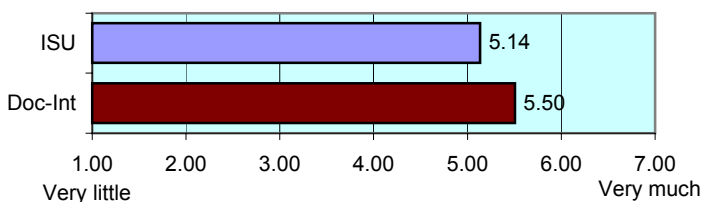
Items		None	1-2	3-4	More than 5
Number of problem sets that take you more than an hour to complete	ISU	18	45	26	11
	Doc-Int	16	35	31	18
Number of problem sets that take you less than an hour to complete	ISU	8	35	34	22
	Doc-Int	18	35	26	21

**In a typical week, how many homework problem sets take you more than 15 minutes each to complete?**

Items		None	1-3	4-6	More than 7
In a typical week, how many homework problems take you more than 15 minutes each to complete?	ISU	13	35	34	18
	Doc-Int	15	32	29	24

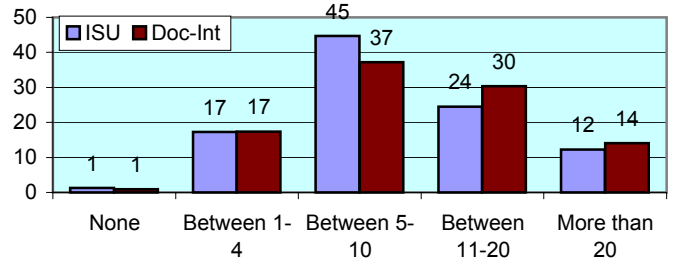
**Mark the box that best represents the extent to which your examinations during the current school year have challenged you to do your best work**

numbers indicate means of 7-point scale

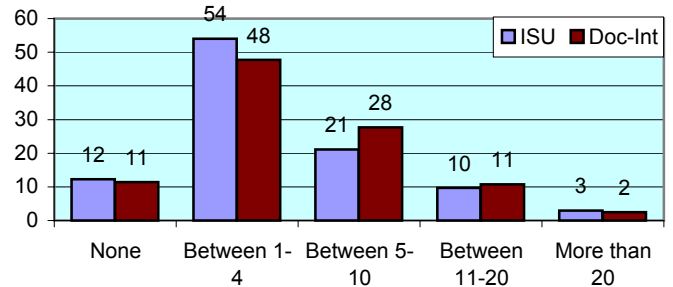


**During the current school year, about how much reading and writing have you done?**

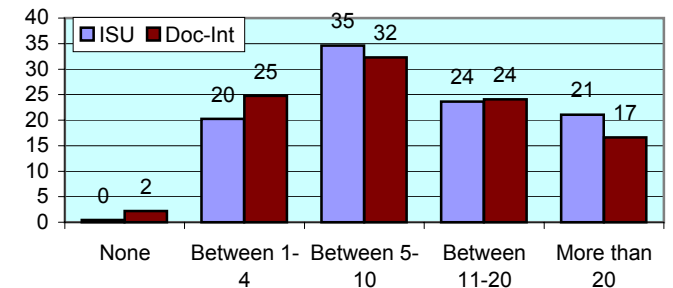
**Number of assigned textbooks, books, or book-length packs of course readings**



**Number of written papers or reports between 5 and 19 pages**



**Number of written papers or reports of fewer than 5 pages**



## V. PLANS DURING COLLEGE

**Which of the following have you done or do you plan to do before you graduate from your institution?**

Item		Unde-cided	No	Yes
Practicum, internship, field experience, co-op experience, or clinical assignment	ISU	15	6	79
	Doc-Int	13	4	83
Community service or volunteer work	ISU	21	13	67
	Doc-Int	19	9	72
Participate in a learning community where groups take 2+ classes together	ISU	29	22	49
	Doc-Int	39	26	35
Worked on a research project with a faculty member outside of course	ISU	39	26	35
	Doc-Int	46	24	31
Foreign language coursework	ISU	24	46	30
	Doc-Int	26	32	42
Study abroad	ISU	36	43	21
	Doc-Int	34	34	32
Independent study or self-designed major	ISU	29	54	17
	Doc-Int	36	49	15
Culminating senior experience (thesis, project, etc.)	ISU	42	28	31
	Doc-Int	44	15	42



Office of Strategic Planning, Institutional Research & Effectiveness  
419 Rankin Hall, Tel: 237-2305, Fax: 237-4530  
<http://irt2.indstate.edu/home/index.htm>