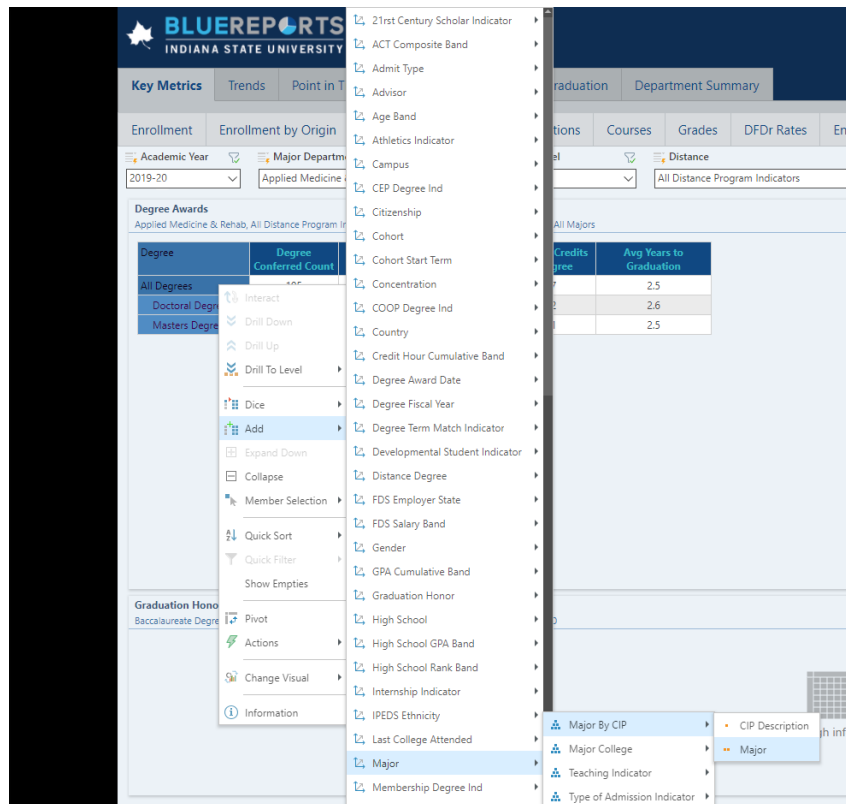


Using the Blue Reports Academic Chair dashboard to get annual report metrics for graduate programs:

Time to Degree

From the Key Metrics menu, select Degrees. From the filters, select 2019-20 for Academic Year; the appropriate department for Major Department; and Graduate for Student Level.

Then from the All Degrees row label, right-click and select Add, Major\Major by CIP\Major:



Results (Time to degree is in the last column):

Academic Year	Major Department	Student Level	Distance	Note: Academic Y
2019-20	Applied Medicine & Rehab	Graduate	All Distance Program Indicators	

Degree	Major By CIP	Degree Conferred Count	Distinct Graduates	Avg Final GPA for Degree	Avg Total Credits for Degree	Avg Years to Graduation
All Degrees	Physician Assistant Studies (A174)	27	27	3.70	89.5	2.3
	Athletic Training (A172)	21	21	3.57	57.1	2.0
	Occupational Therapy (A176)	29	29	3.70	81.0	2.6
	Physical Therapy (A175)	28	28	3.76	101.0	3.0
Doctoral Degree	Athletic Training (A172)	21	21	3.57	57.1	2.0
	Physical Therapy (A175)	28	28	3.76	101.0	3.0
Masters Degree	Physician Assistant Studies (A174)	27	27	3.70	89.5	2.3
	Occupational Therapy (A176)	29	29	3.70	81.0	2.6

Determining cohorts enrolled in Fall 2019

From the Trends menu, select Enrollment by College and Department. Select Graduate from the Student Level filter if it is not already there.

Right-click on the Fall 2019 column label and select Member Selection\Focus.

Right-click on the appropriate department's row label and select Member Selection\Focus and Descendants.

Right-click on the Fall 2019 column label and select Dice, Start Term for Program, Start Term for Program, Academic Year

Results:

All Distance Program Indicators, Fall, Graduate, Enrolled, Fall 2019, Primary, Census				
	2016	2017	2018	2019
Applied Medicine & Rehab	2	58	104	110
Athletic Training (A172)			22	22
Occupational Therapy (A176)	1	29	26	30
Physical Therapy (A175)	1	28	29	28
Physician Assistant Studies (A174)		1	27	30

Retention

From the Trends menu, select Fall to Fall Return Rates.

From any of the Graduate column labels, right click and select Member Selection\Focus. To see the retention % for the last two years, click on the Fall 2018 column label, then click on Fall 2019 with the Ctrl button pressed so that both are highlighted. Then right-click and select Focus.

Then double-click on the appropriate department's row label.

Result (the Retention % is the percentage of students in that term who did not graduate before the next Fall who enrolled the next Fall):

	Retention % (Next Fall)	
	Fall 2018	Fall 2019
	Graduate	Graduate
Athletic Training (A172)	95.65%	100.00%
Occupational Therapy (A176)	100.00%	98.25%
Physical Therapy (A175)	96.67%	98.28%
Physician Assistant Studies (A174)	100.00%	96.77%